

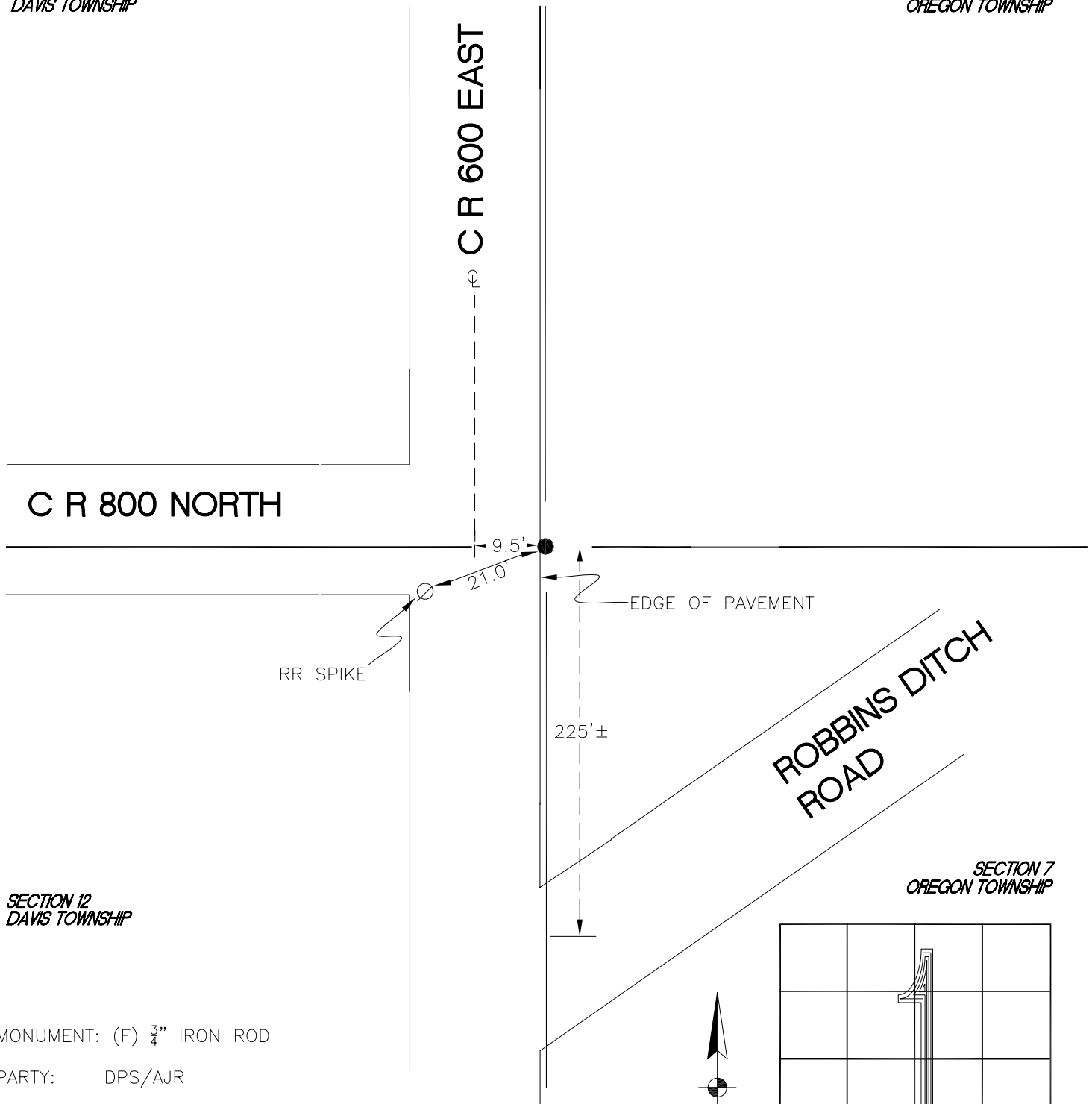
DAVIS TOWNSHIP

T 34 N, R 2 W

E25

SECTION 1
DAVIS TOWNSHIP

SECTION 6
OREGON TOWNSHIP



SECTION 12
DAVIS TOWNSHIP

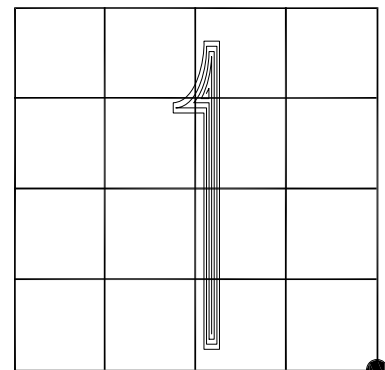
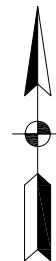
SECTION 7
OREGON TOWNSHIP

MONUMENT: (F) $\frac{3}{4}$ " IRON ROD

PARTY: DPS/AJR

DATE: AUGUST 2017

COMMENTS: 0.2" E OF E EDGE OF PAVEMENT OF 600 E;
2' S OF ϕ OF 800 N.
SET BY TERRITORIAL ENGINEERING IN 1988.



CORNER LOCATION IN THE SECTION