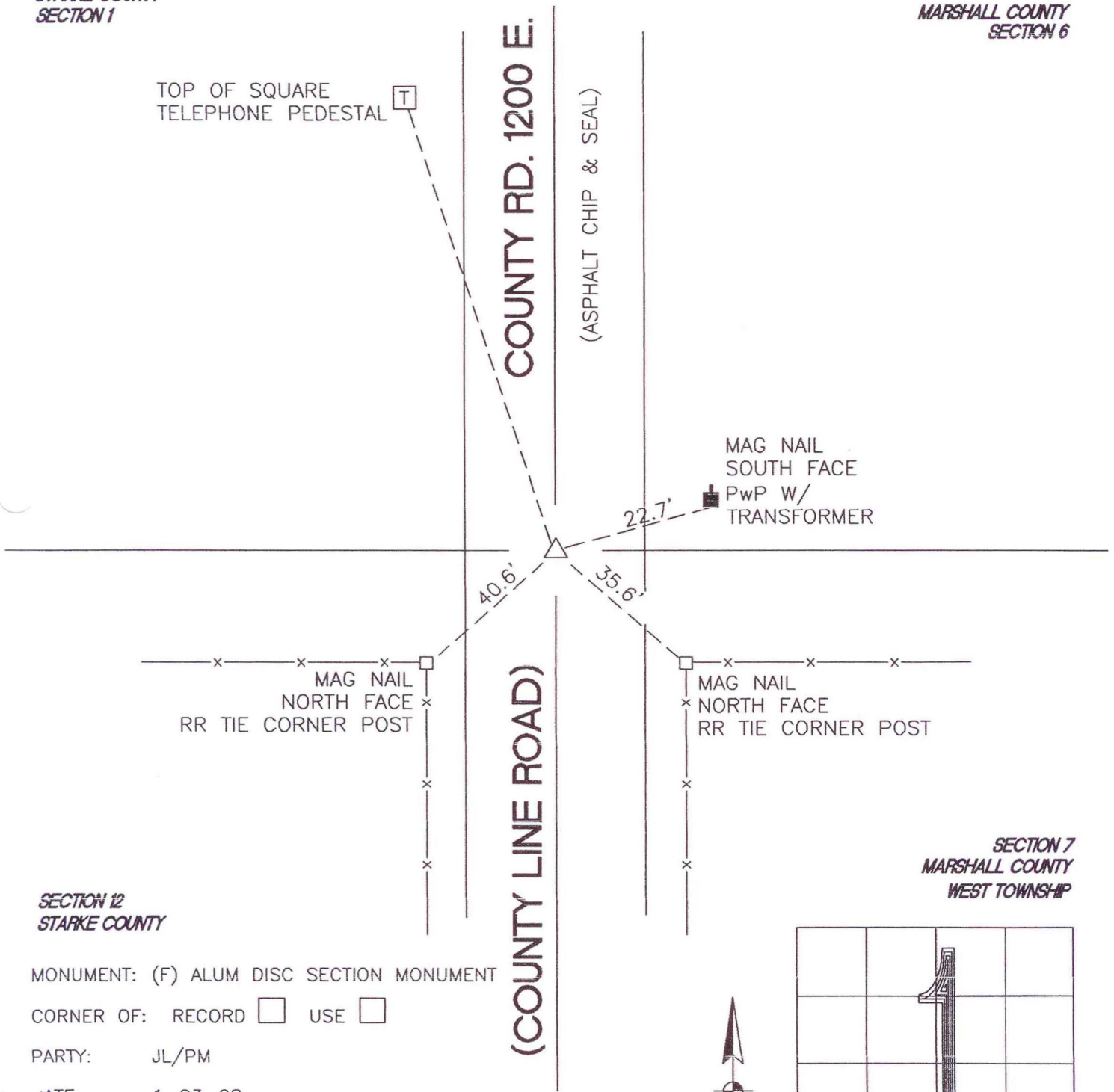


WASHINGTON TOWNSHIP

T 33 N, R 1 W

STARKE COUNTY
SECTION 12

WEST TOWNSHIP
MARSHALL COUNTY
SECTION 7



SECTION 12
STARKE COUNTY

SECTION 7
MARSHALL COUNTY
WEST TOWNSHIP

MONUMENT: (F) ALUM DISC SECTION MONUMENT

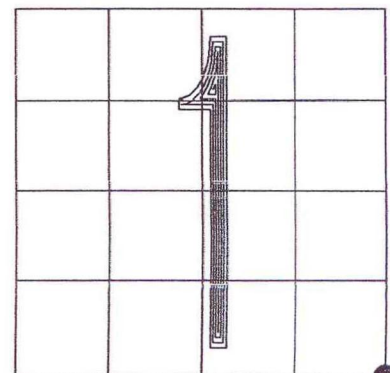
CORNER OF: RECORD USE

PARTY: JL/PM

DATE: 1-23-08

COMMENTS: FOUND AND REFERENCED BY
DPS/TAB OF TERRITORIAL
ENGINEERING IN 2004.
MONUMENT ESTABLISHED BY MARSHALL
COUNTY IN 1993 OVER STONE.

INDEX NUMBER
E25



E25

CORNER LOCATION IN THE SECTION