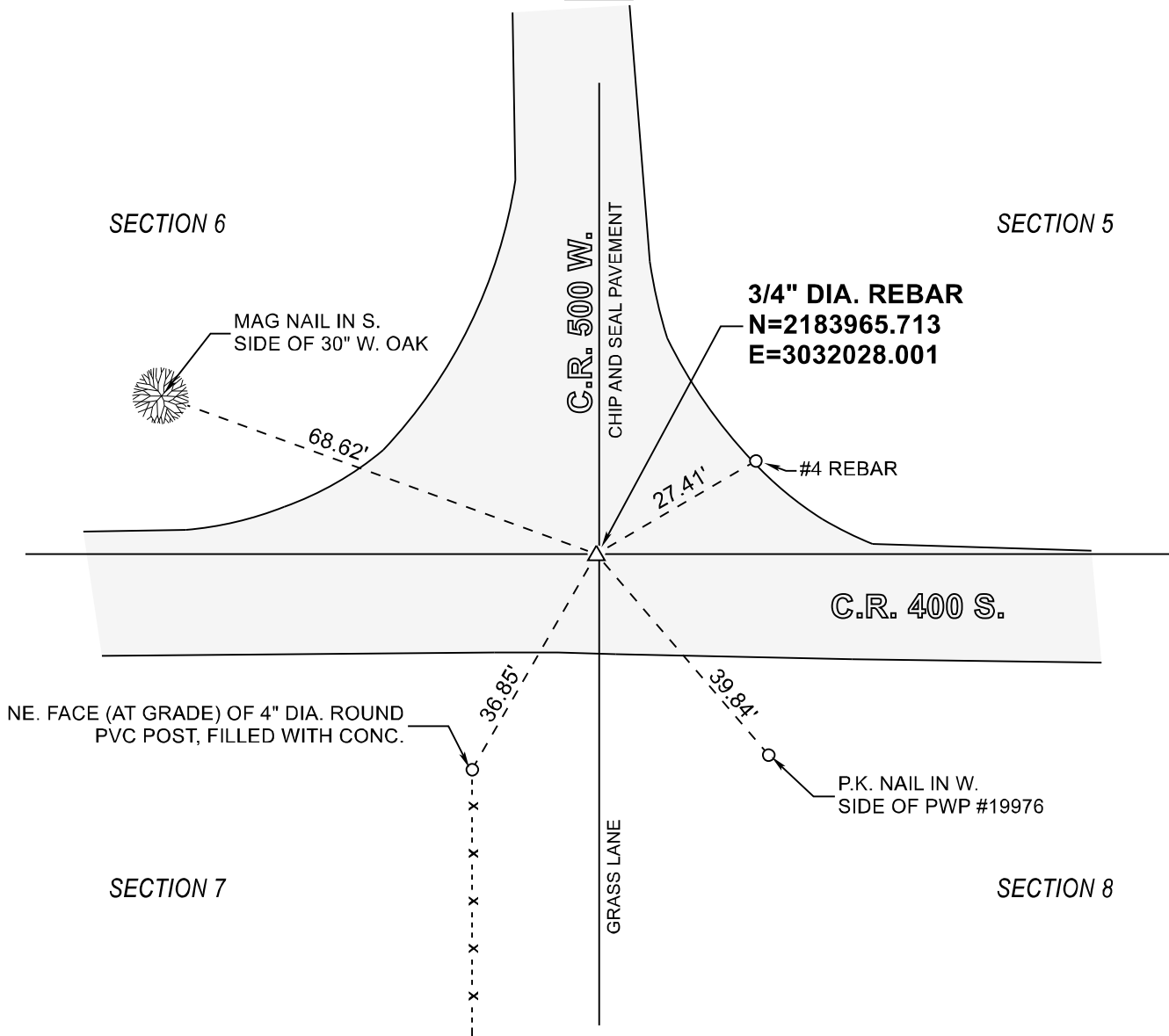


STARKE COUNTY SECTION CORNER RECORD

WAYNE TOWNSHIP

T 32 N, R 3 W

E5



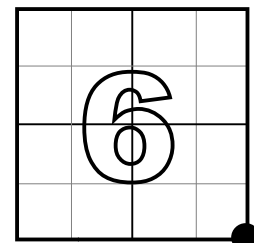
MONUMENT: 3/4" DIAMETER REBAR OVER 2" DIA. CAST IRON PIPE

PARTY: SES DATE: 05/08/2020

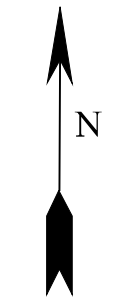
COMMENTS: FOUND 2" DIA. CIP (-4"). SET 12" LONG 3/4" DIAMETER REBAR FLUSH OVER CIP. CIP IS NOW 12" DEEP.

RECOVERED 3/11/03 BY VHJ, DWC, BJ.

COORDINATE DATUM: INDIANA STATE PLANE WEST NAD83(2011).
Coordinates shown on this sheet are for informational purposes only, and are not to be use in lieu of measurements by a professional surveyor.



CORNER LOCATION IN SECTION



NOT TO SCALE