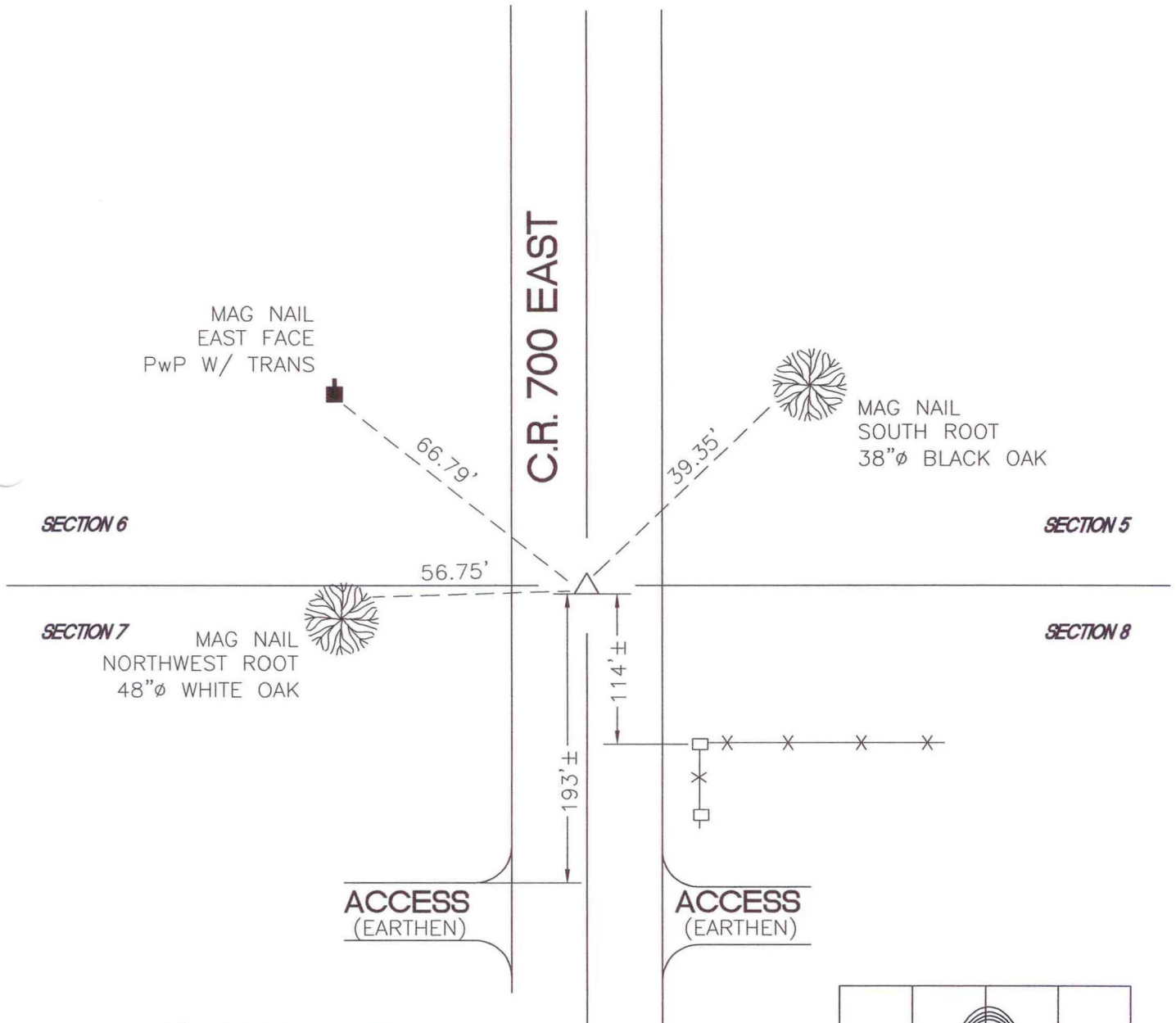


OREGON TOWNSHIP

T34 N, R 1 W



MONUMENT: (F) 3/4" REBAR BENT 7" BELOW GRADE

CORNER OF: RECORD USE

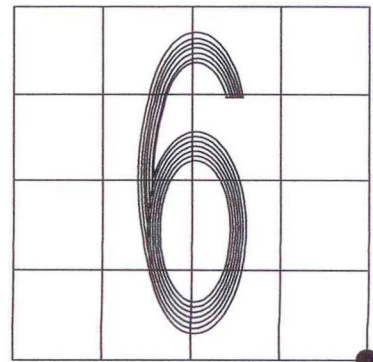
PARTY: VHJ/COD

DATE: 3-25-05

COMMENTS: (STRAIGHTENED REBAR)
 HISTORY: DLA OF TERRITORIAL ENGR
 SET 3/4" REBAR OVER STONE IN
 JUNE/JULY OF 1990.

INDEX NUMBER

E5



CORNER LOCATION IN THE SECTION