

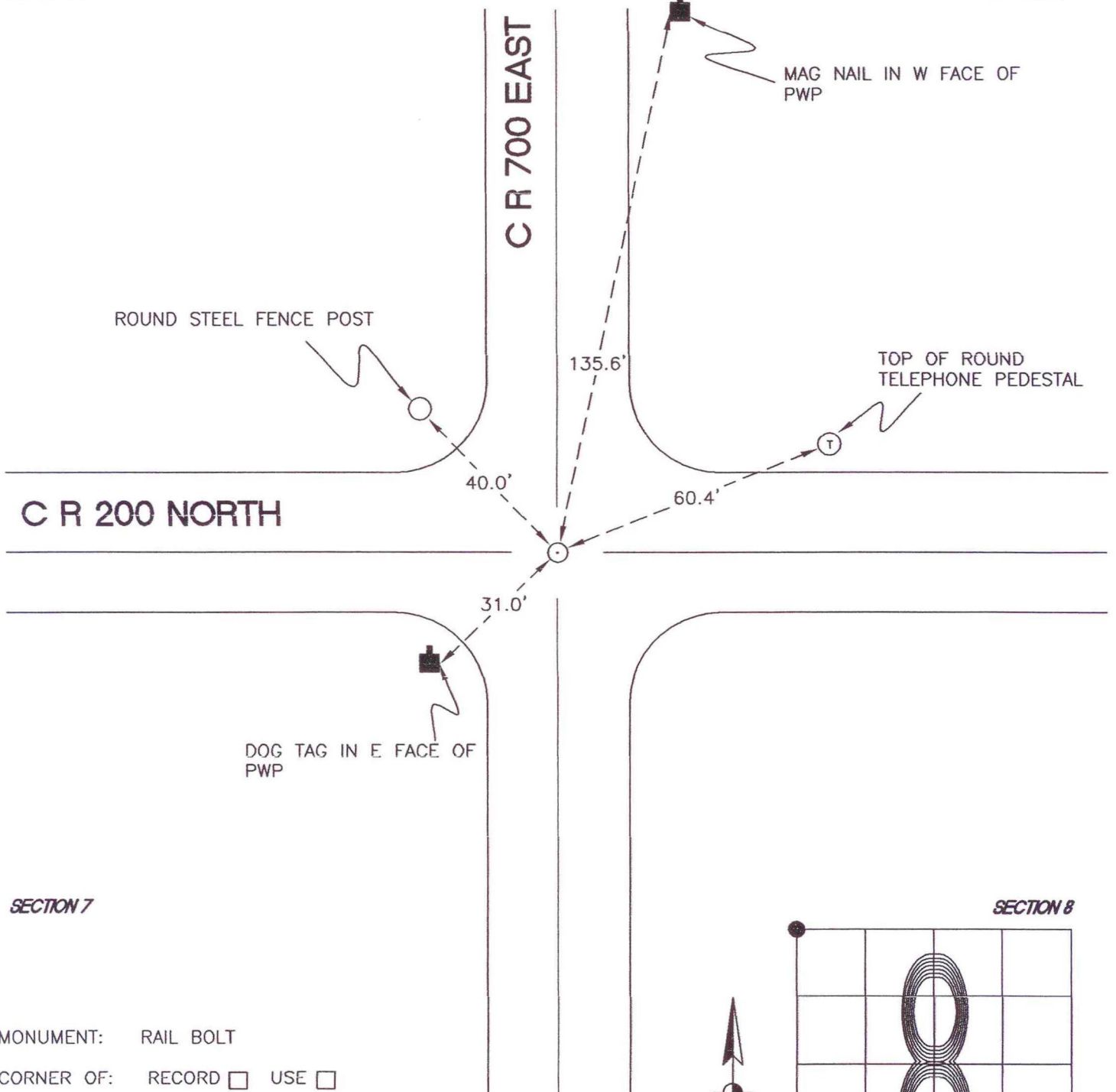
WASHINGTON TOWNSHIP

T 33 N, R 1 W

E5

SECTION 6

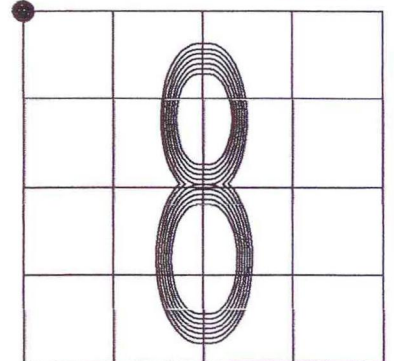
SECTION 5



SECTION 7

SECTION 8

MONUMENT: RAIL BOLT
CORNER OF: RECORD USE
PARTY: JL/PM
DATE: 12-7-2007
COMMENTS: 5" BELOW GRADE; 1 1/2' S OF \odot OF 200N



CORNER LOCATION IN THE SECTION

E5