

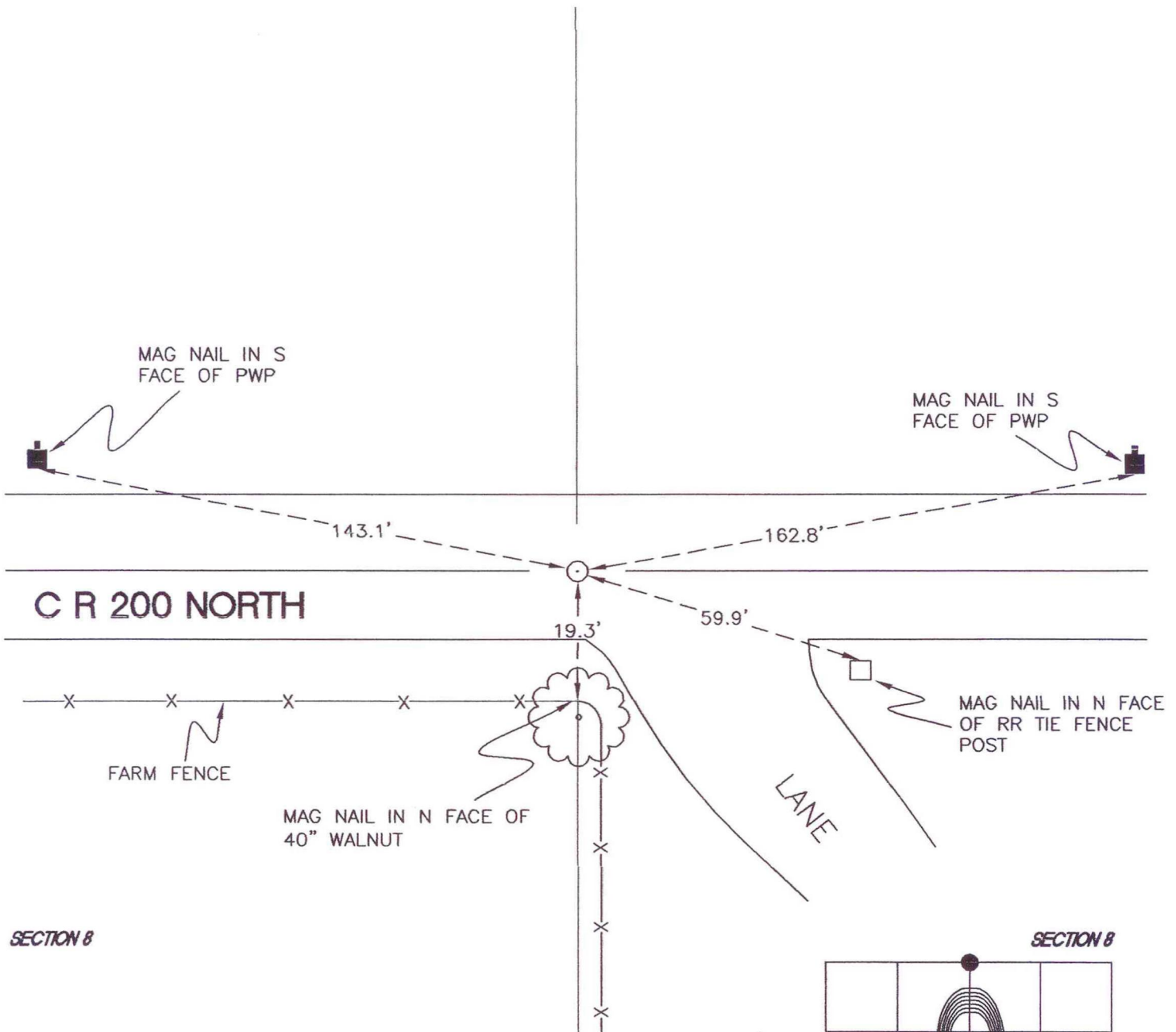
WASHINGTON TOWNSHIP

T 33 N, R 1 W

E7

SECTION 5

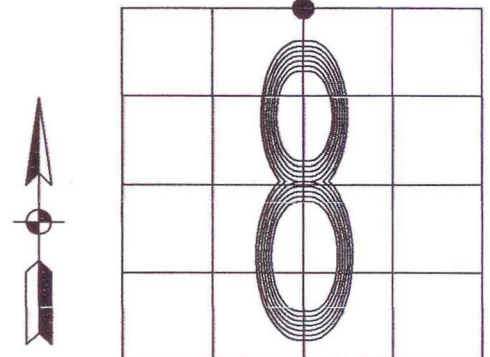
SECTION 5



SECTION 8

SECTION 8

MONUMENT: RAIL BOLT
CORNER OF: RECORD USE
PARTY: JL/PM
DATE: 12-7-2007
COMMENTS: 4" BELOW GRADE; 1' S OF \mathcal{C} OF 200N



CORNER LOCATION IN THE SECTION

E7