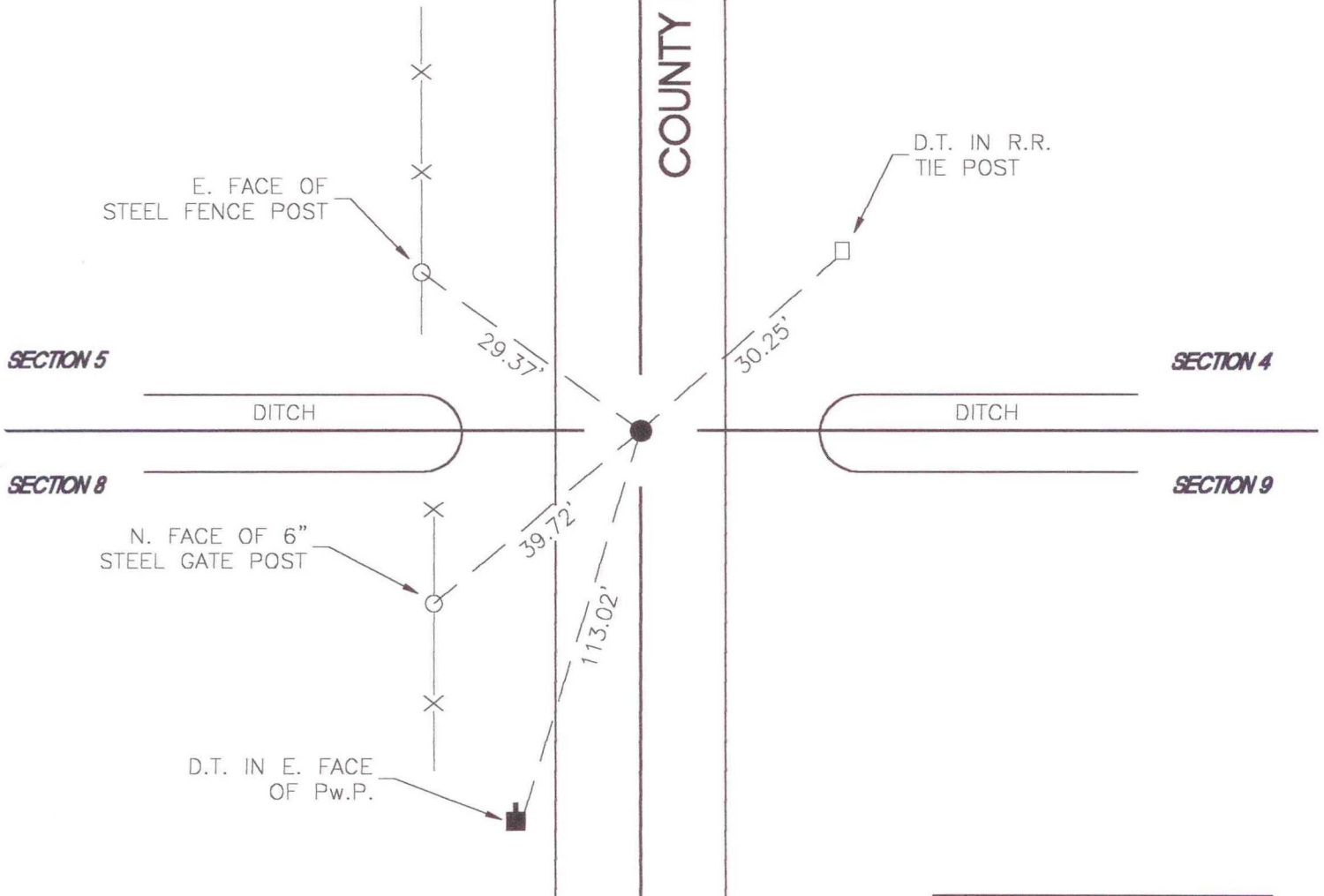


CENTER TOWNSHIP

T 33 N, R 2 W

E9

COUNTY RD. 200 E.



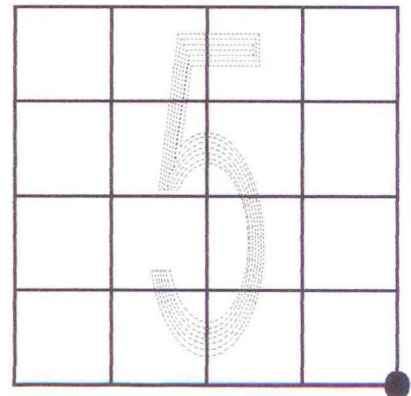
MONUMENT: 5/8" IRON ROD

CORNER OF: RECORD USE

PARTY: DWC \ DPS

DATE: 10-11-2000

COMMENTS: NONE



CORNER LOCATION IN THE SECTION