

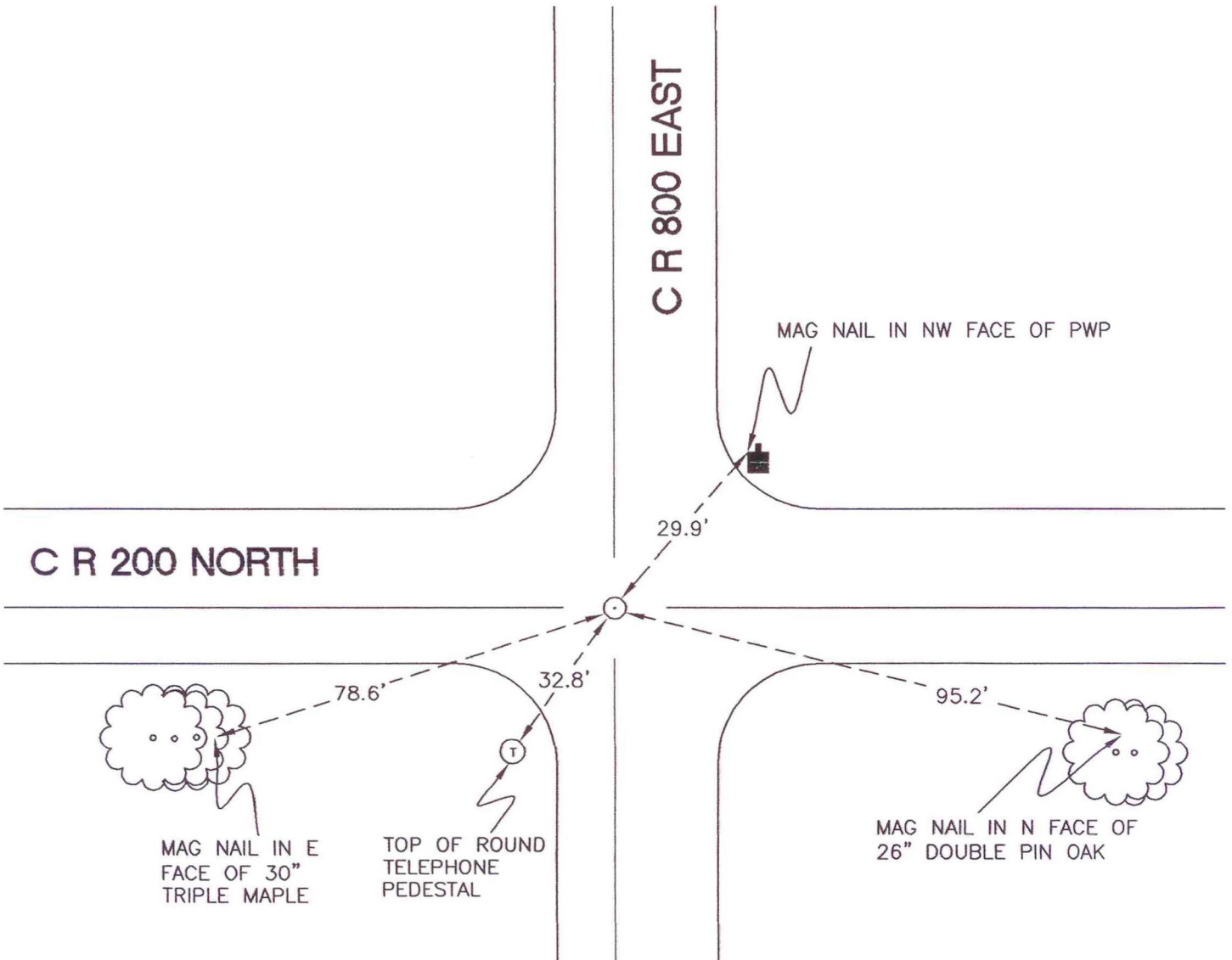
# WASHINGTON TOWNSHIP

T 33 N, R 1 W

## E9

SECTION 5

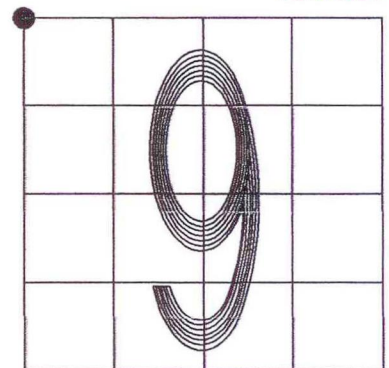
SECTION 4



SECTION 8

SECTION 9

MONUMENT: RAIL BOLT  
CORNER OF: RECORD  USE   
PARTY: JL/PM  
DATE: 12-7-2007  
COMMENTS: 2" BELOW GRADE; 2' W OF  $\phi$  OF 800E;  
2 1/2' S OF  $\phi$  OF 200N



CORNER LOCATION IN THE SECTION

## E9