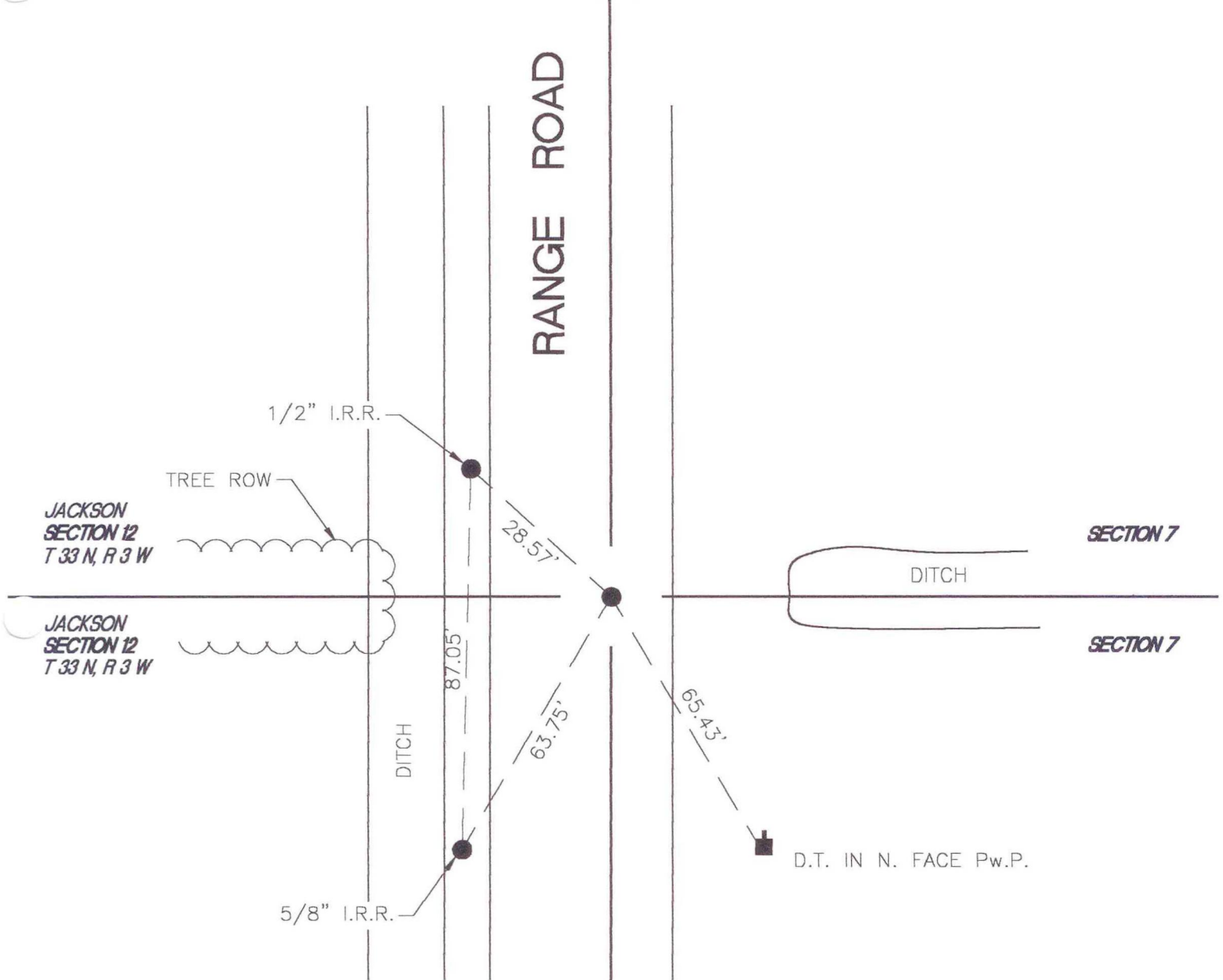


CENTER TOWNSHIP

T 33 N, R 2 W

G1



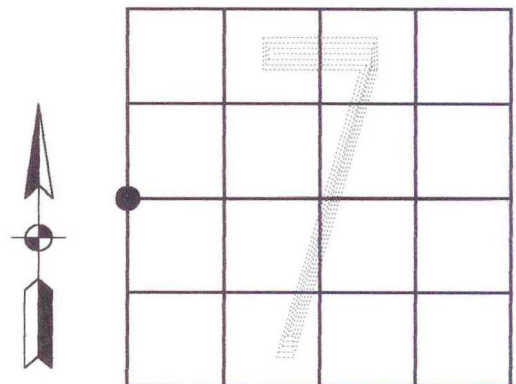
MONUMENT: 5/8" IRON ROD

CORNER OF: RECORD USE

PARTY: DWC \ DPS

DATE: 10-10-2000

COMMENTS: MONUMENT LOCATED 4'± EAST OF CENTER LINE OF RANGE ROAD



CORNER LOCATION IN THE SECTION