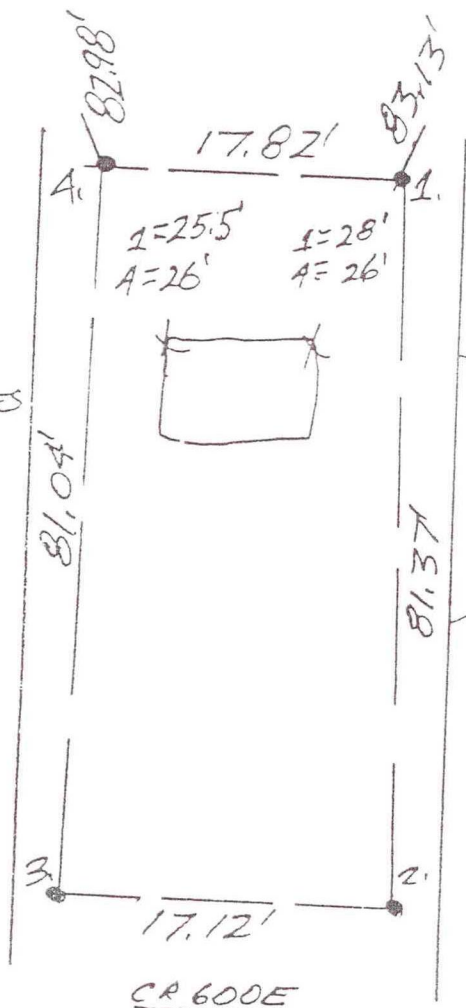


1. TUES 26 JUNE '90 PLARS 0537, P. MAYER ϕ .
 FOUND 1" ϕ REBAR W/ CENTER PUNCH @ $\approx 1/2$ WHEELED
 5,297' \approx 2,648'. SET REFS.; WILL OIB. FOUND REBAR'S
 REFS \rightarrow 1. = 29.14' ; 2. = 55.37' ; 3. = 54.64' ; 4. = 27.65'
2. THURS. 12 JULY '90 DUG 7' X 3.5' X 3' DEEP HOLE;
 FOUND NO POST, NO PIT, NO STONE
3. TUES 17 JULY SPOTTED HOLE.

3/24/05 VHJ/COD OF TERRITORIAL ENGR, FOUND NOTHING

SET RR. SPIKES
 W/CENTER PUNCHES
 @ ALL REFS.



CR 600E
 CHIP & SEAL

WEST $1/4$ COR. SEC. 7
 (ACTUALLY EYA COR. S. 12, T 34N-R2W)

NO MONUMENT
 G-1