

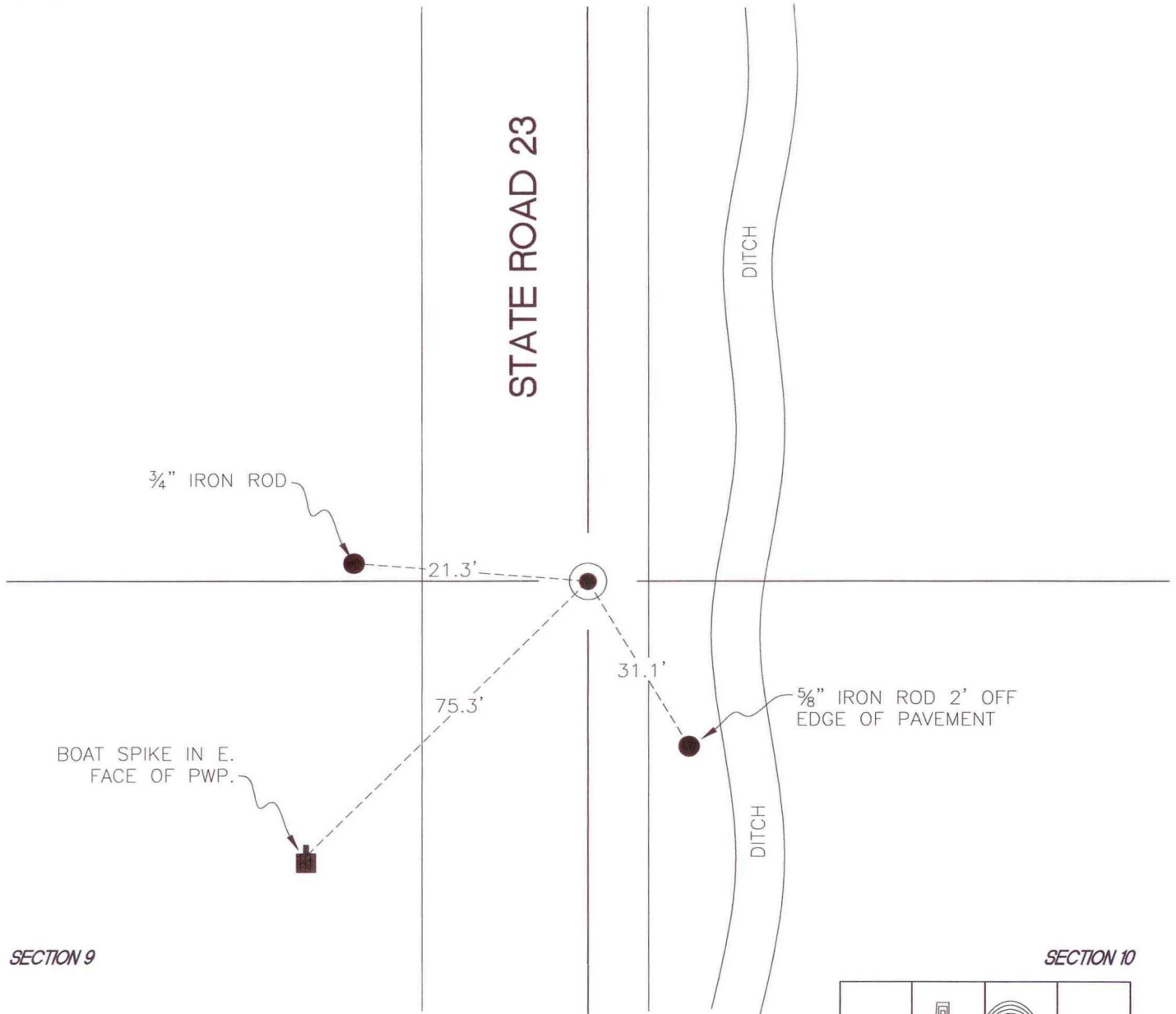
NORTH BEND TOWNSHIP

T 32 N, R 1 W

G13

SECTION 9

SECTION 10



SECTION 9

SECTION 10

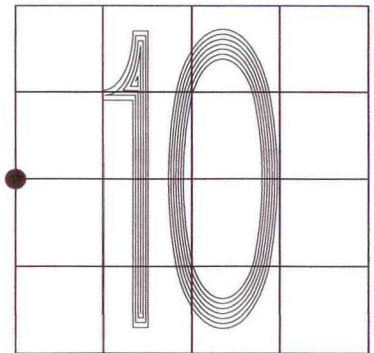
MONUMENT: 3/4" IRON PIPE IN MONUMENT BOX

CORNER OF: RECORD USE

PARTY: DWC/JL

DATE: 11-25-2008

COMMENTS: 4.4' W. OF E. EDGE OF PAVEMENT



CORNER LOCATION IN THE SECTION

G13