

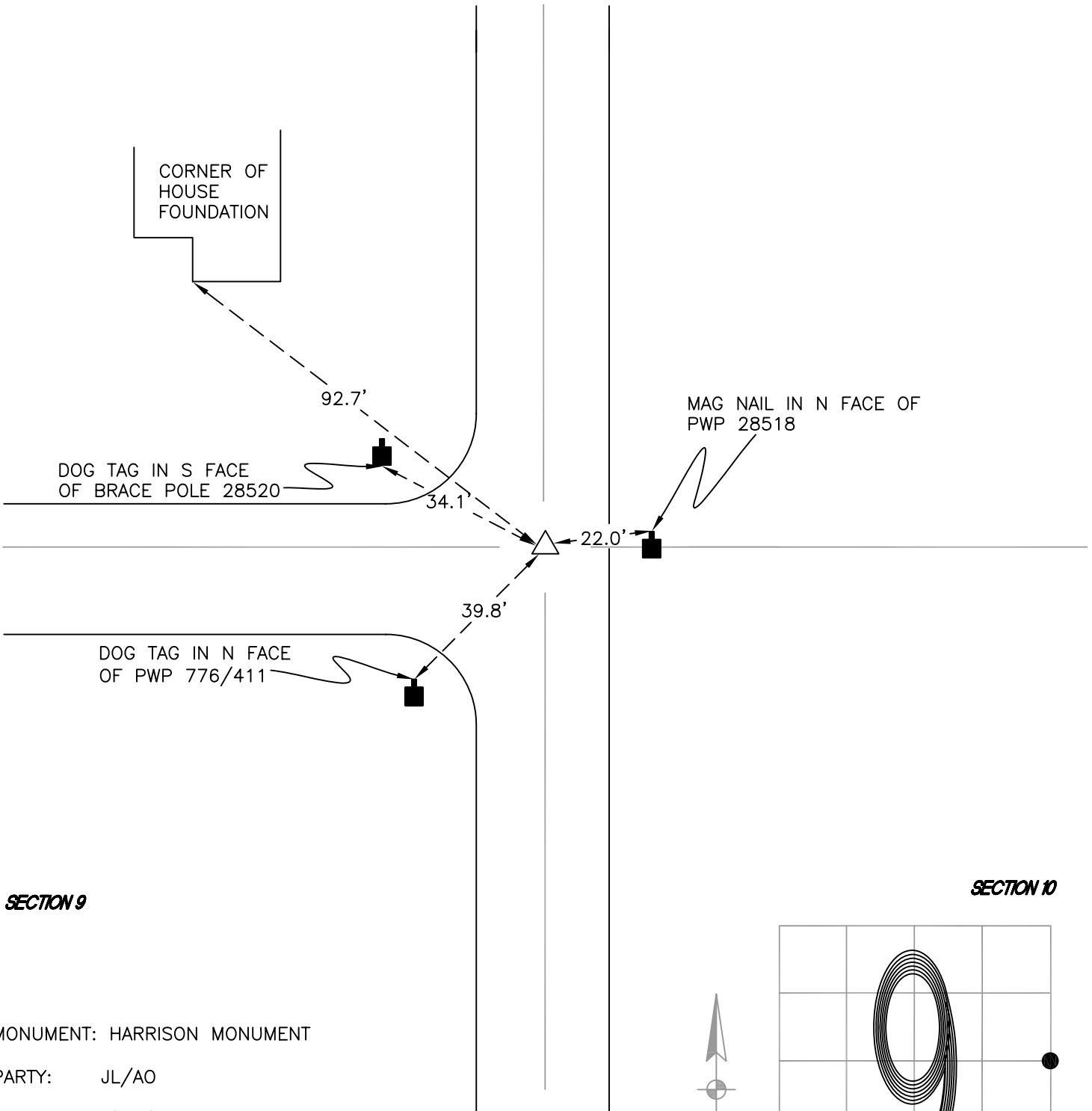
CALIFORNIA TOWNSHIP

T 32 N, R 2 W

G13

SECTION 9

SECTION 10



SECTION 9

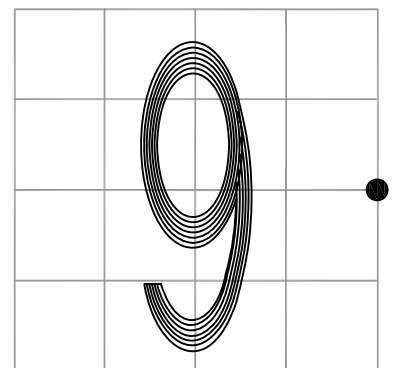
SECTION 10

MONUMENT: HARRISON MONUMENT

PARTY: JL/AO

DATE: 7/11/12

COMMENTS: 4" BELOW GRADE; 2.5' N OF C OF 450 S.
HARRISON FOUND BY INDOT IN 1991. STONE
FOUND IN 1977. EXISTENCE OF STONE NOT
VERIFIED IN 2012.



CORNER LOCATION IN THE SECTION

G13