

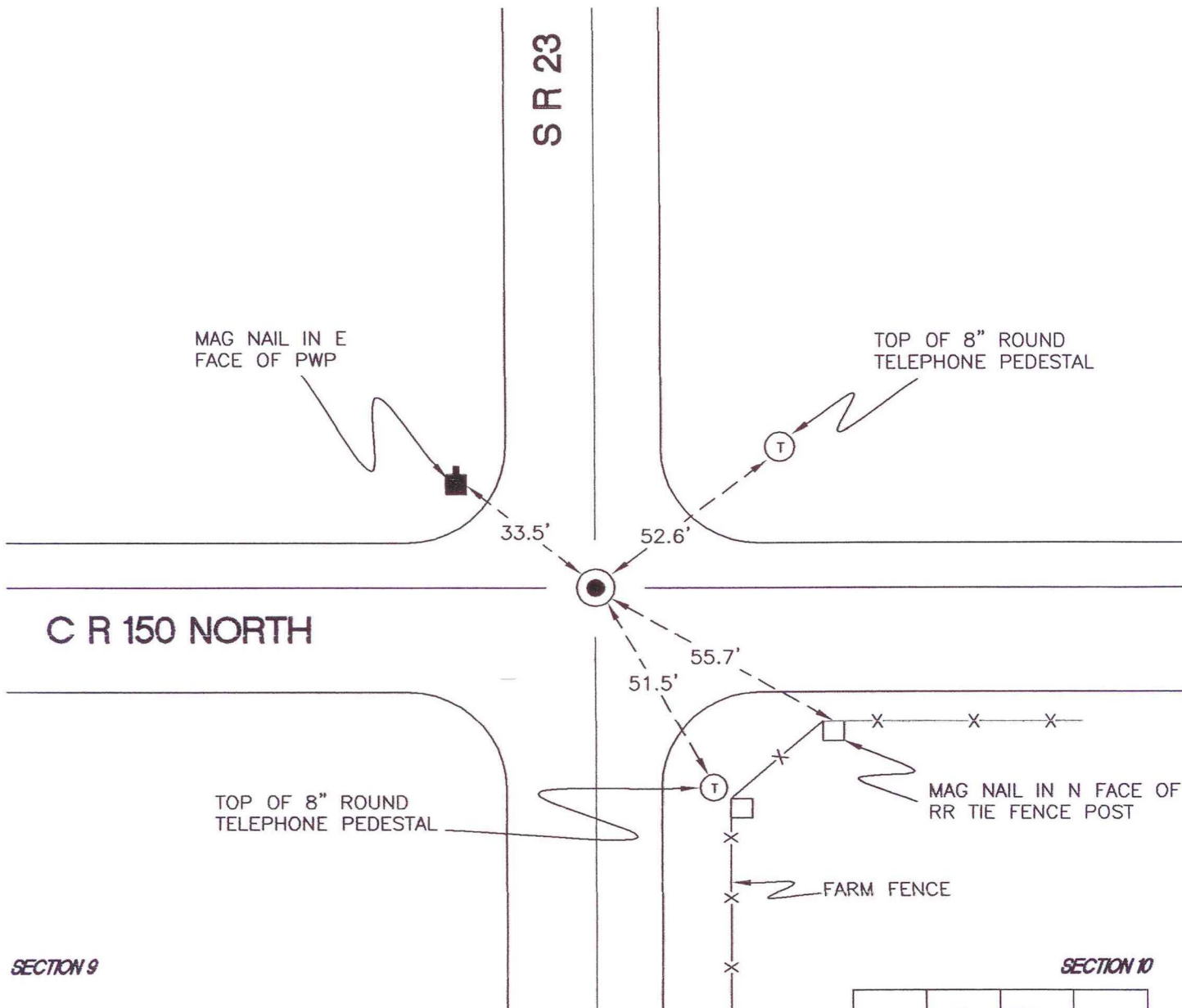
WASHINGTON TOWNSHIP

T 33 N, R 1 W

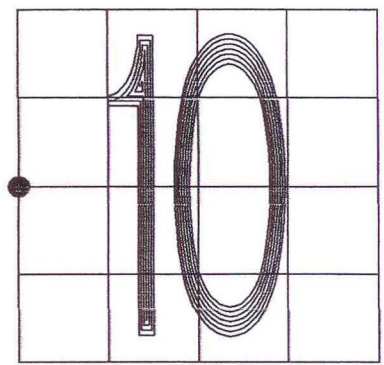
G13

SECTION 9

SECTION 10



MONUMENT: 5/8" IRON ROD IN MONUMENT BOX
CORNER OF: RECORD USE
PARTY: JL/PM
DATE: 12-3-2007
COMMENTS: 1' E OF ϕ OF SR 23; 3' N OF ϕ OF 150N



CORNER LOCATION IN THE SECTION

G13