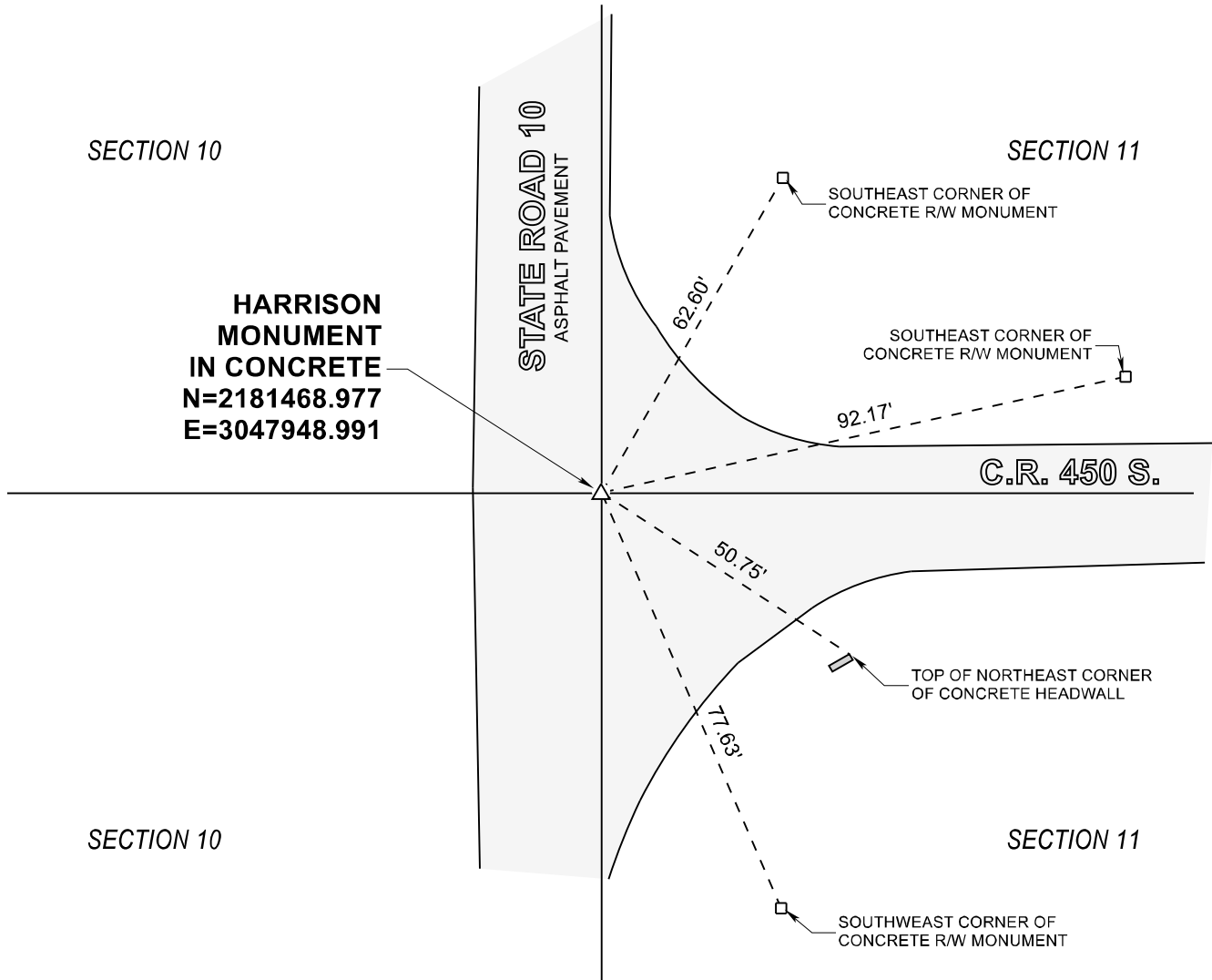


STARKE COUNTY SECTION CORNER RECORD

WAYNE TOWNSHIP

T 32 N, R 3 W

G17



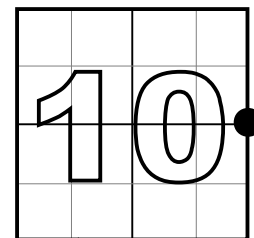
MONUMENT: HARRISON MONUMENT IN CONCRETE

PARTY: SES DATE: 11/19/2020

COMMENTS: 3/4" REBAR SET ON 3/11/03 BY VHJ, DWC, BJ.; FIELD BOOK M-9, PAGE 96

HARRISON MONUMENT APPEARS TO HAVE BEEN SET BY INDOT IN CONFORMANCE WITH COUNTY WITNESSES.

COORDINATE DATUM: INDIANA STATE PLANE WEST NAD83(2011).
Coordinates shown on this sheet are for informational purposes only, and are not to be used in lieu of measurements by a professional surveyor.



CORNER LOCATION
IN SECTION



NOT TO
SCALE