

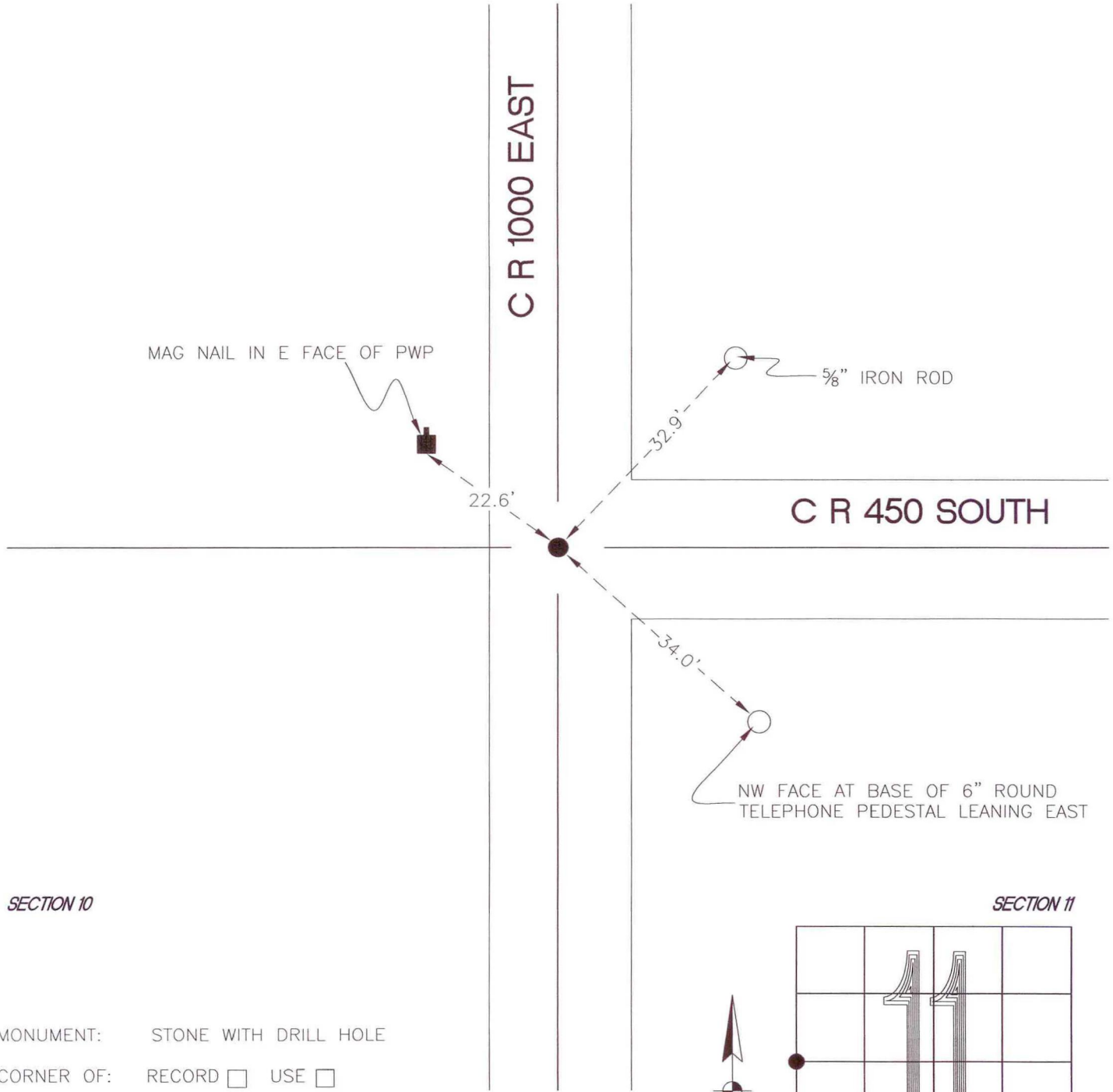
# NORTH BEND TOWNSHIP

T 32 N, R 1 W

## G17

SECTION 10

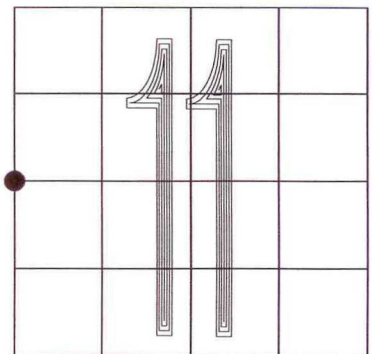
SECTION 11



SECTION 10

SECTION 11

MONUMENT: STONE WITH DRILL HOLE  
CORNER OF: RECORD  USE   
PARTY: DWC/JL  
DATE: 11-24-2008  
COMMENTS: 0.1' BELOW GRADE  
1' EAST OF  $\phi$  OF 1000 EAST



CORNER LOCATION IN THE SECTION

## G17