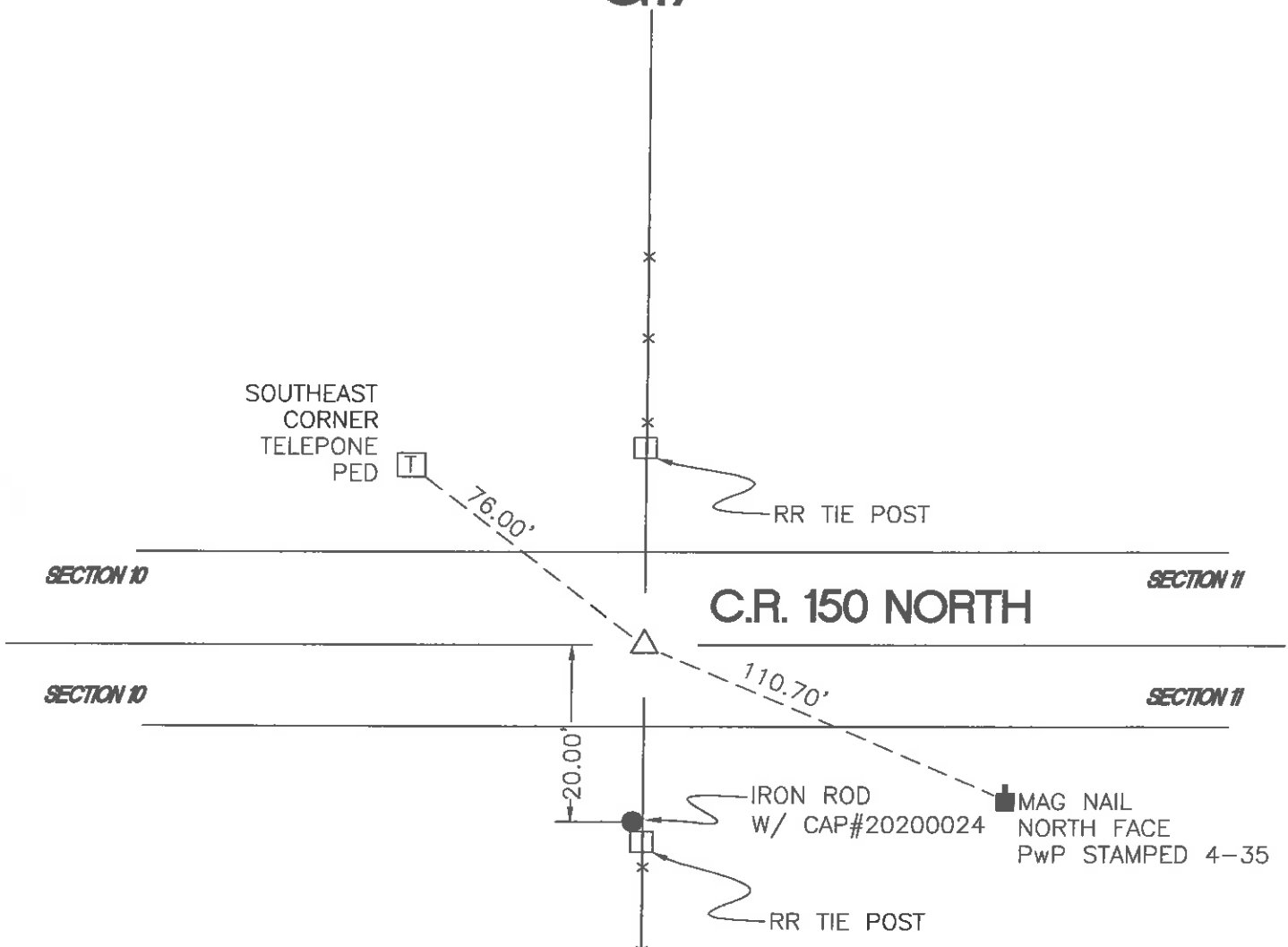


WASHINGTON TOWNSHIP

T 33 N, R 1 W

G17



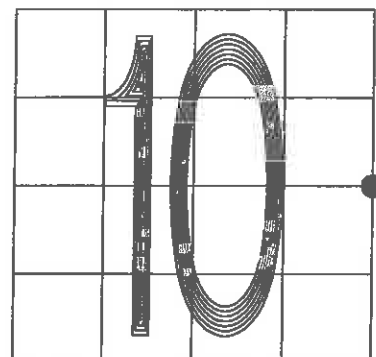
MONUMENT: (F) 5/8" IRON ROD 0.5' BELOW GRADE

CORNER OF: RECORD USE

PARTY: DPS/GER

DATE: 2-25-05

COMMENTS:



CORNER LOCATION IN THE SECTION