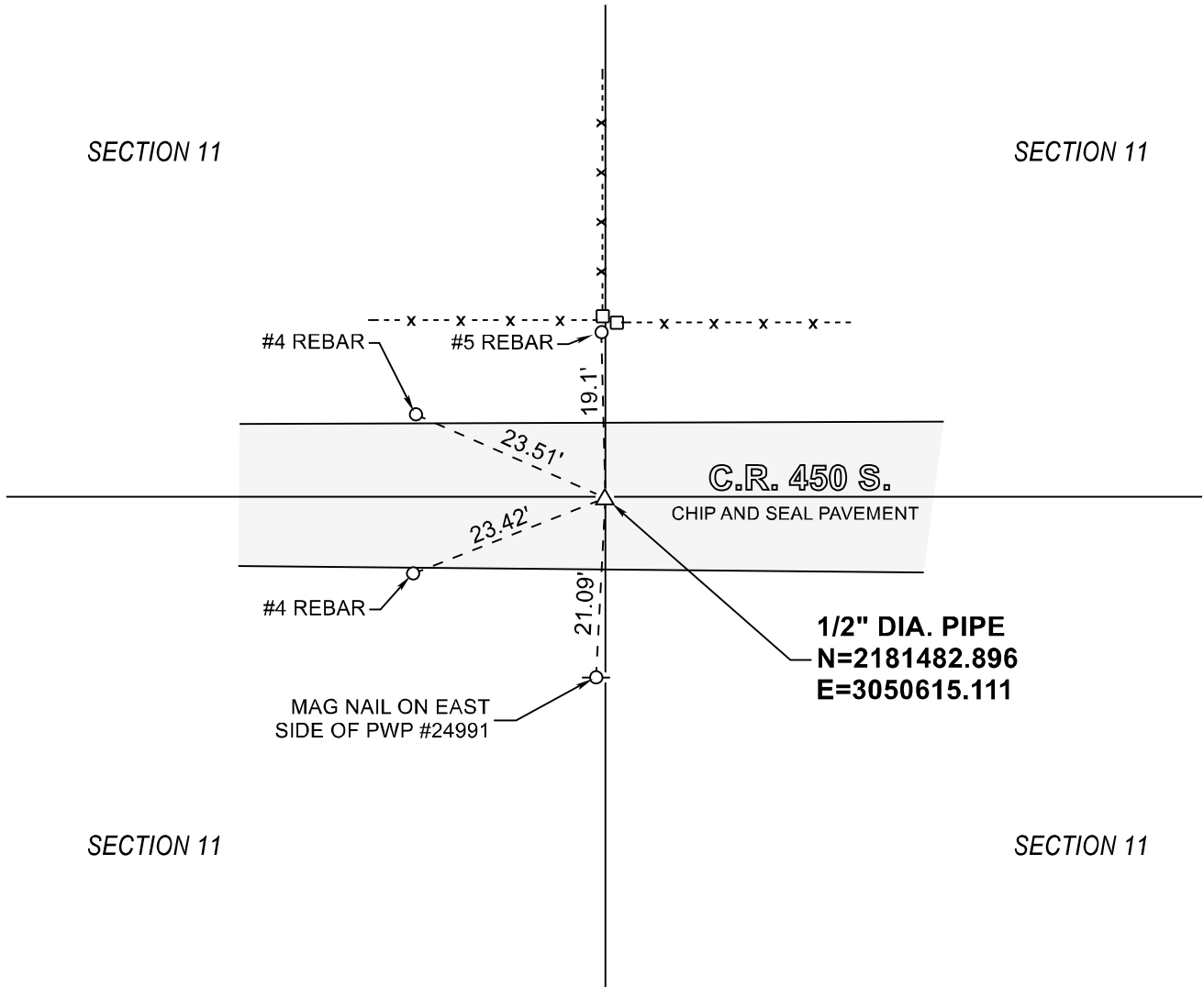


STARKE COUNTY SECTION CORNER RECORD

WAYNE TOWNSHIP

T 32 N, R 3 W

G19



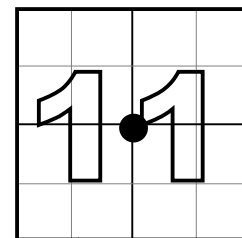
MONUMENT: 1/2" DIA. PIPE (FLUSH)

PARTY: SES DATE: 04/08/2020

COMMENTS:

3/12/03 BY VHJ, DWC AND BJ: (F) C.I. HARRISON MONUMENT (9" B.G.) (S)
1/2" I. PIPE (FLUSH W/PAVEMENT). FIELD BOOK M-9, PAGE 51

COORDINATE DATUM: INDIANA STATE PLANE WEST NAD83(2011).
Coordinates shown on this sheet are for informational purposes only, and
are not to be use in lieu of measurements by a professional surveyor.



CORNER LOCATION
IN SECTION



NOT TO
SCALE