

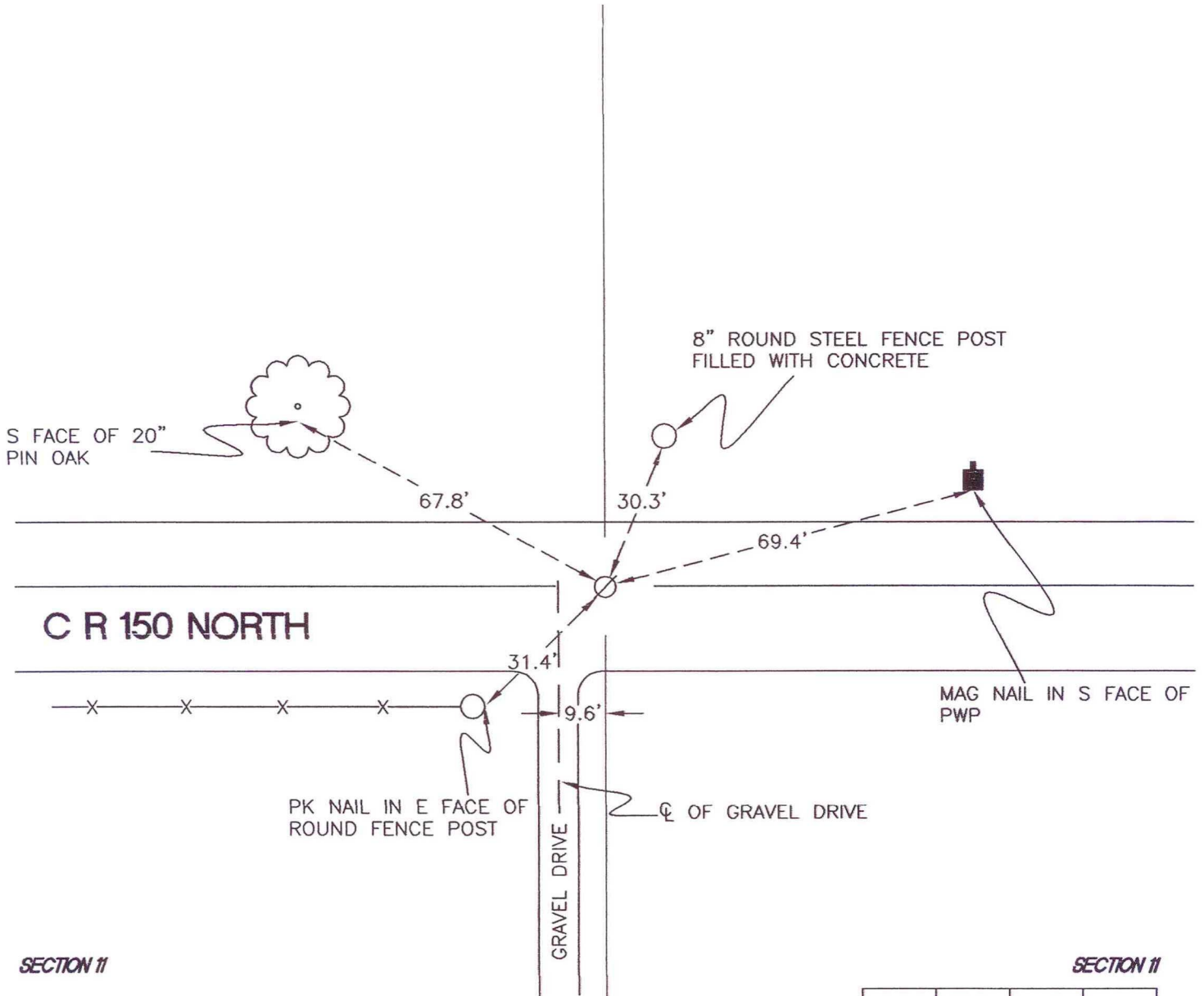
WASHINGTON TOWNSHIP

T 33 N, R 1 W

G19

SECTION 11

SECTION 11



SECTION 11

SECTION 11

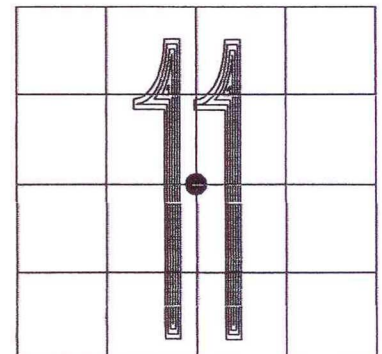
MONUMENT: RAILROAD SPIKE W/ PUNCH MARK

CORNER OF: RECORD USE

PARTY: JL/PM

DATE: 12-3-2007

COMMENTS: 1 1/2' N OF ϕ OF 150N



CORNER LOCATION IN THE SECTION

G19