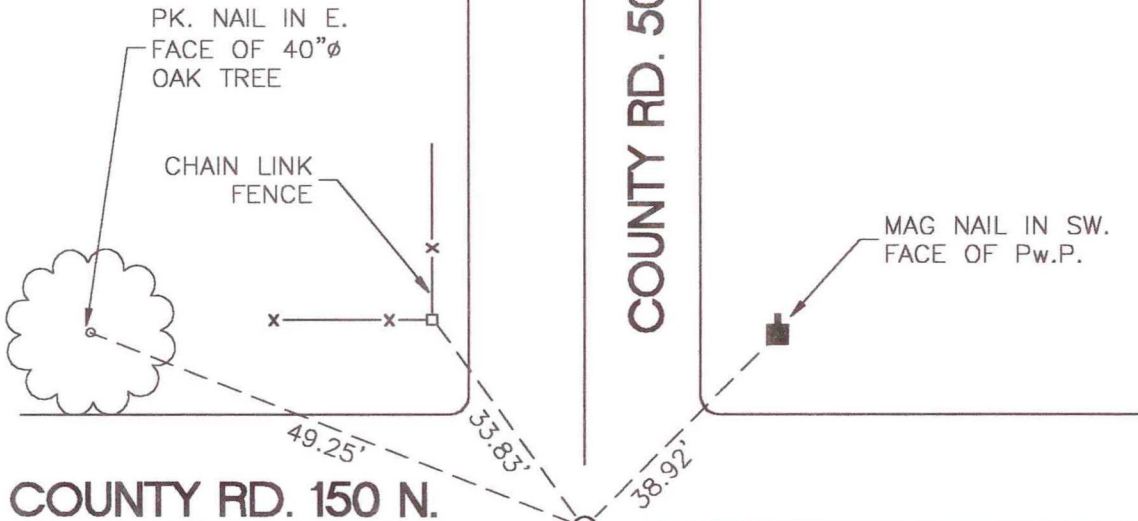


CENTER TOWNSHIP

T 33 N, R 2 W

G21

COUNTY RD. 500 E.



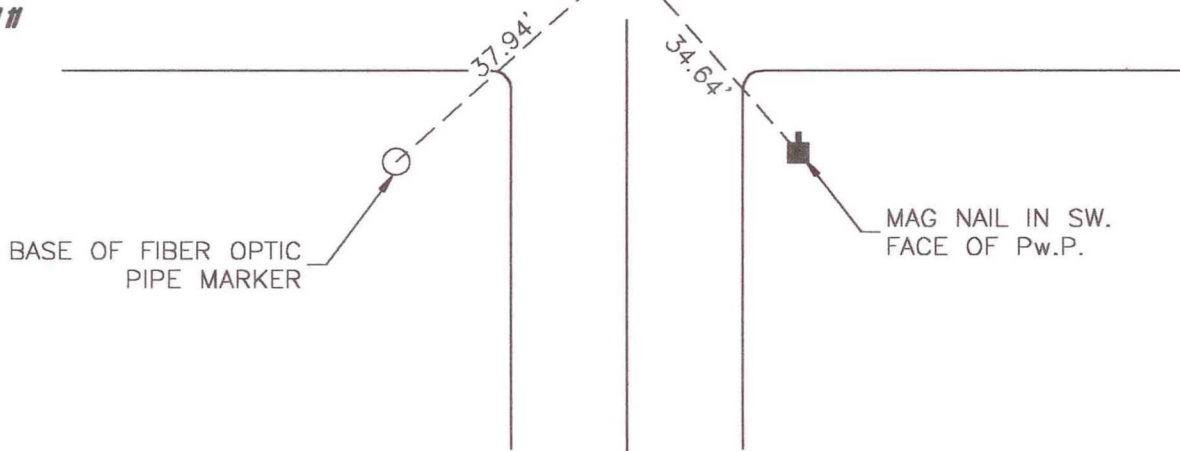
SECTION 11

SECTION 12

COUNTY RD. 150 N.

SECTION 11

SECTION 12



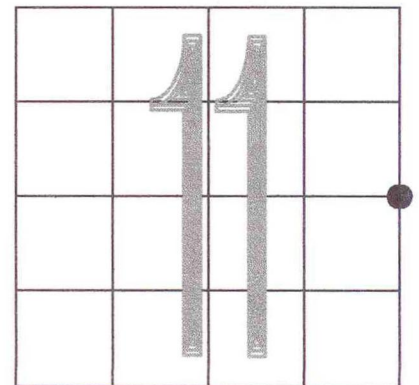
MONUMENT: IRON BOLT

CORNER OF: RECORD USE

PARTY: HJC/VHJ/DPS

DATE: 12/14/2001

COMMENTS: 0.4' BELOW PAVEMENT



CORNER LOCATION IN THE SECTION