

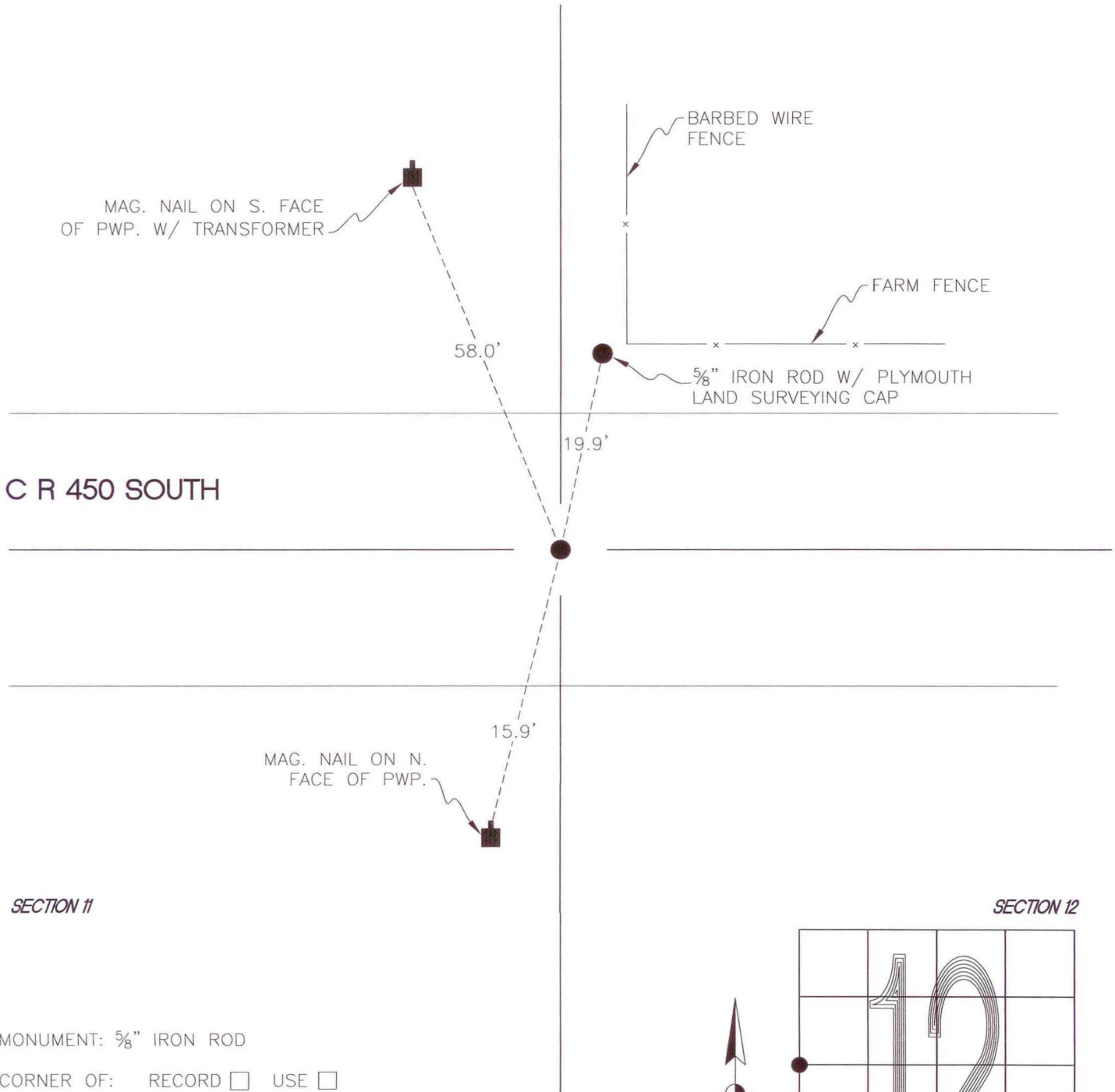
NORTH BEND TOWNSHIP

T 32 N, R 1 W

G21

SECTION 11

SECTION 12



C R 450 SOUTH

SECTION 11

SECTION 12

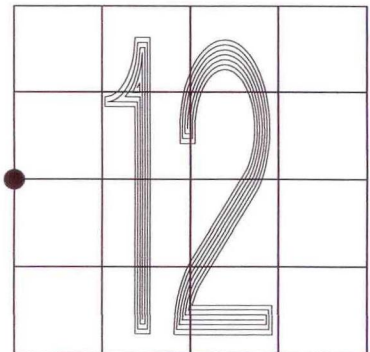
MONUMENT: 5/8" IRON ROD

CORNER OF: RECORD USE

PARTY: DWC/JL

DATE: 11-25-2008

COMMENTS: SET ON JULY 2, 1985
PER VHJ FIELD NOTE.
TERRITORIAL ENGINEERING, LLC



CORNER LOCATION IN THE SECTION

G21