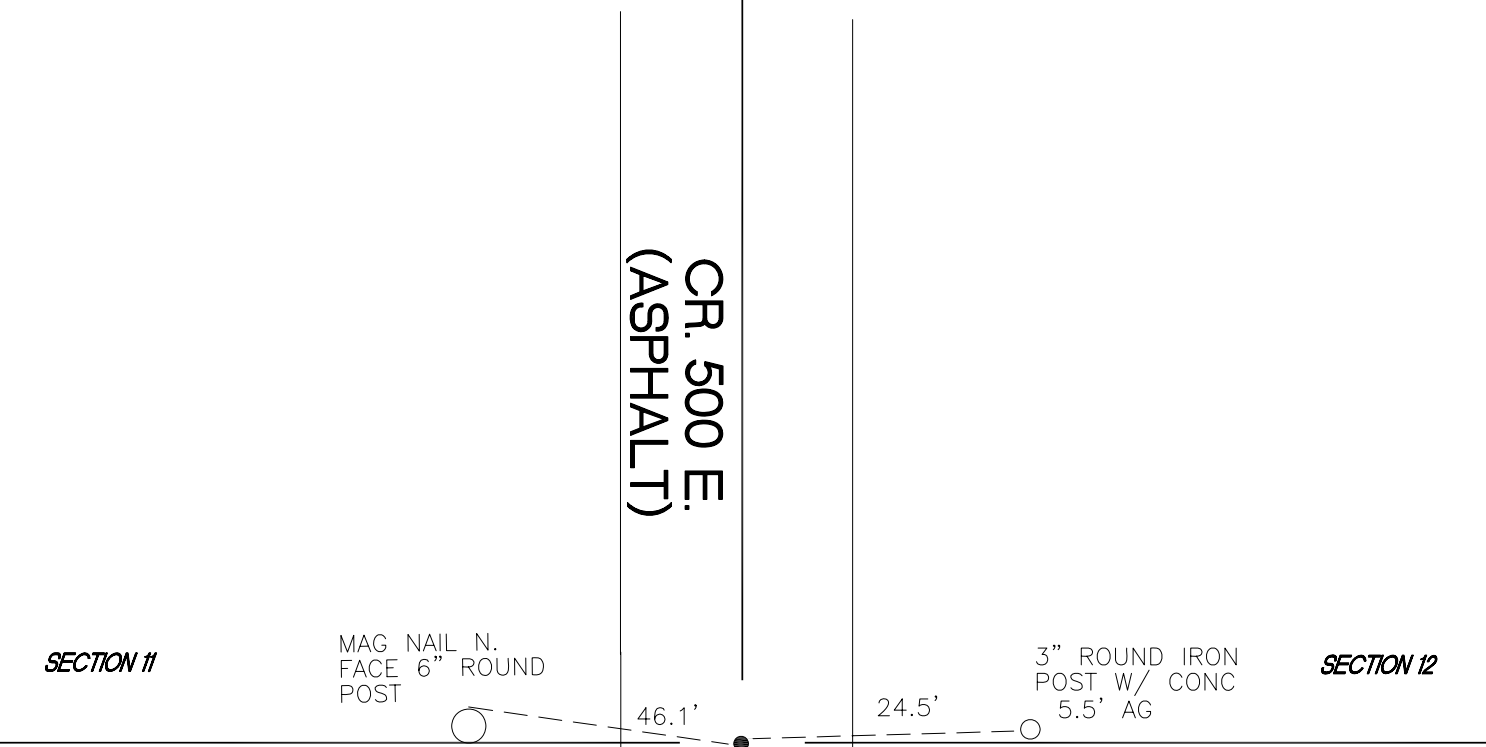


# DAVIS TOWNSHIP

T 34 N, R 2 W

## G21

CR. 500 E.  
(ASPHALT)



MAG NAIL  
W.FACE PWP  
REMC#34836

SECTION 11

SECTION 12

SECTION 11

SECTION 12

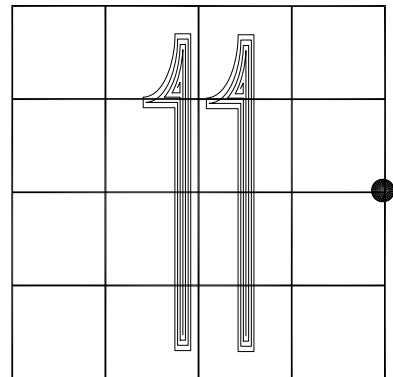
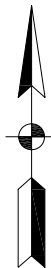
MONUMENT: (F) 3/8" IR INSIDE 1 1/2" IP

CORNER OF: RECORD  USE

PARTY: DPS/AJR

DATE: JULY 2017

COMMENTS: NONE



CORNER LOCATION IN THE SECTION