

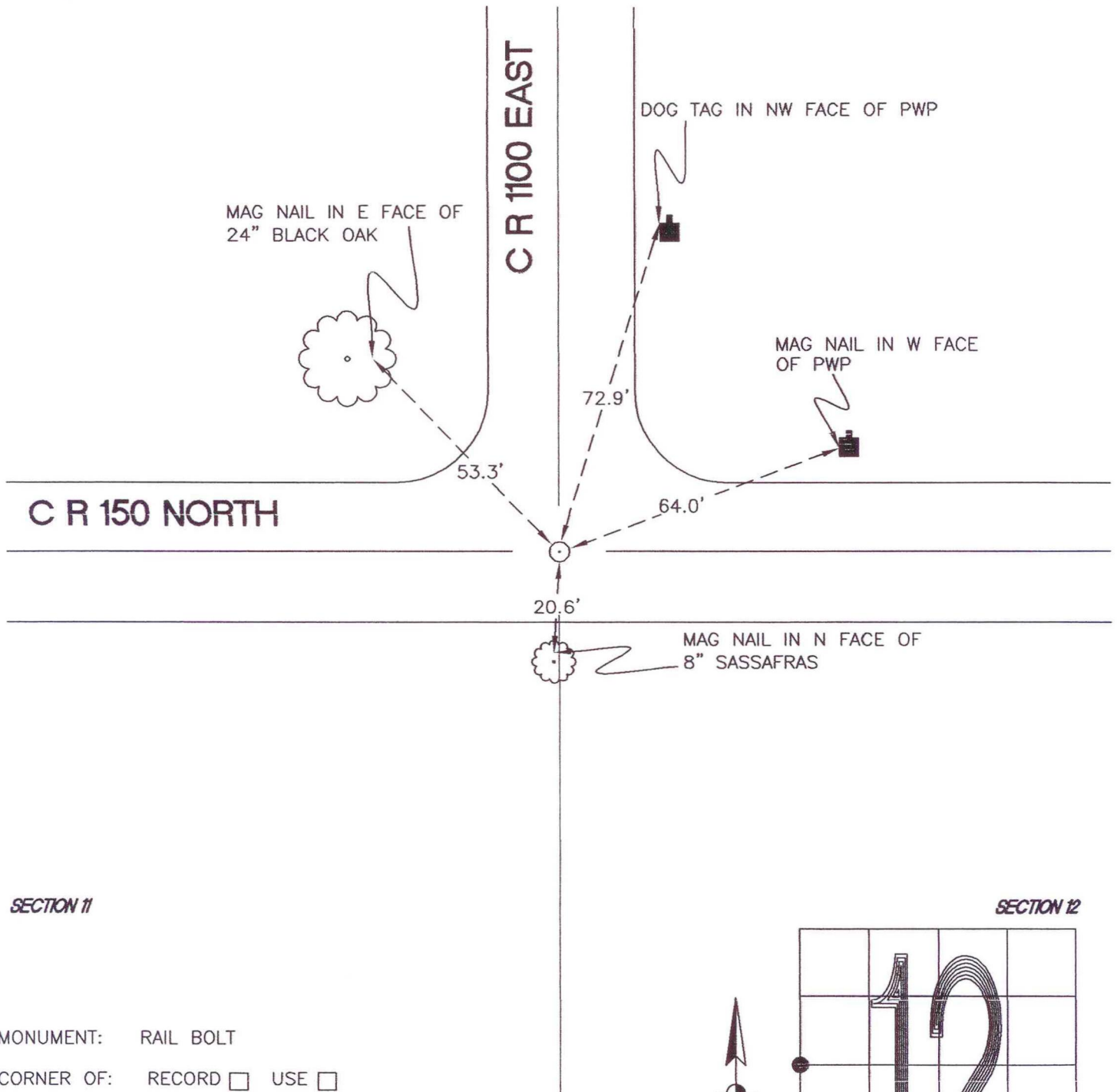
# WASHINGTON TOWNSHIP

T 33 N, R 1 W

## G21

SECTION 11

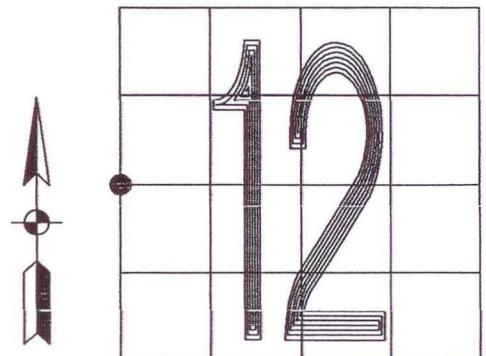
SECTION 12



SECTION 11

SECTION 12

MONUMENT: RAIL BOLT  
CORNER OF: RECORD  USE   
PARTY: JL/PM  
DATE: 12-3-2007  
COMMENTS: 3" BELOW GRADE



CORNER LOCATION IN THE SECTION

# G21