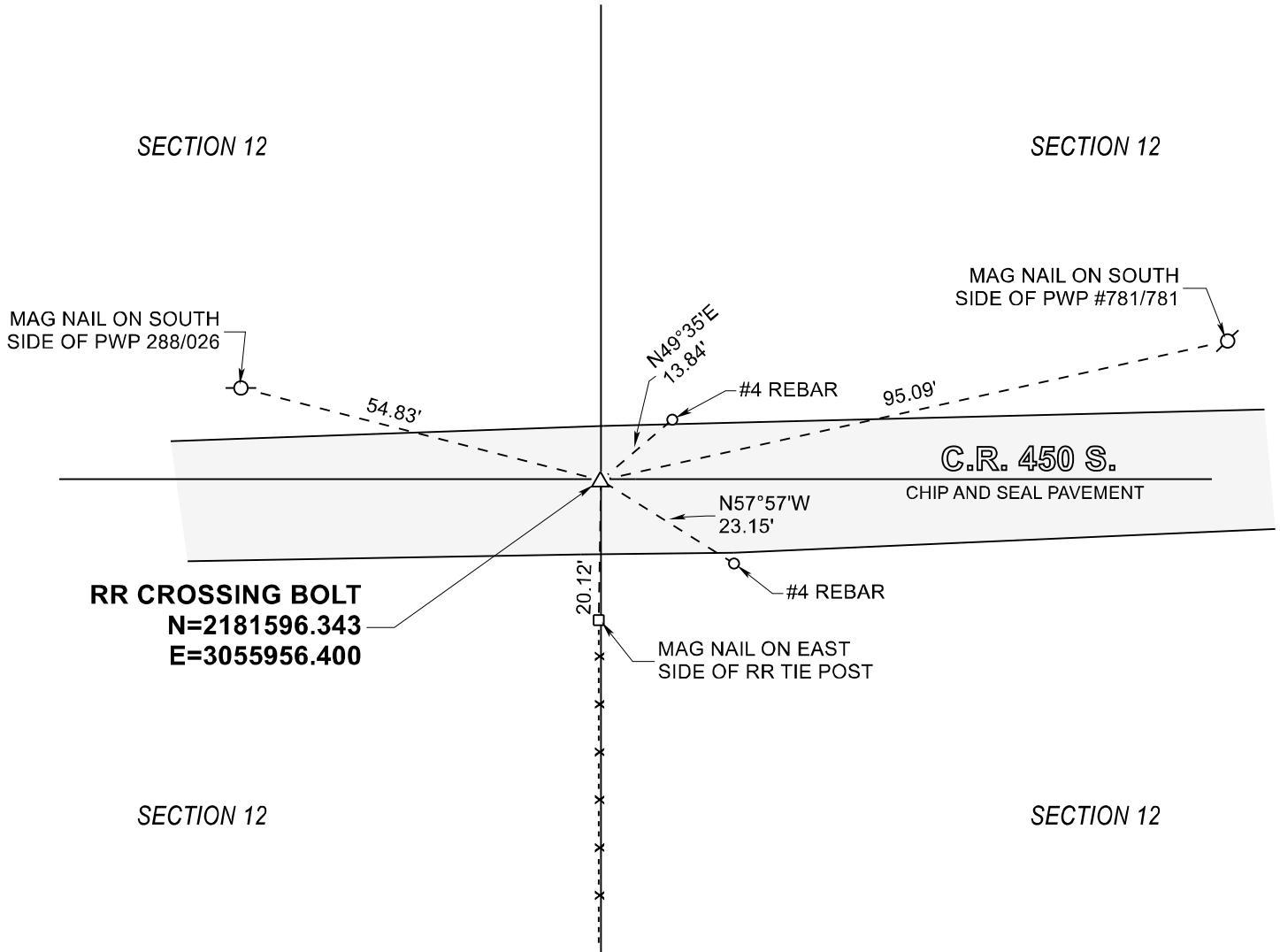


STARKE COUNTY SECTION CORNER RECORD

WAYNE TOWNSHIP

T 32 N, R 3 W

G23

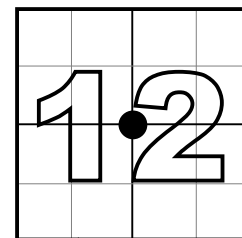


MONUMENT: RAILROAD CROSSING BOLT

PARTY: SES DATE: 11/19/2020

COMMENTS: RECOVERED 4/15/03 BY D.P.S., M.S.L.

COORDINATE DATUM: INDIANA STATE PLANE WEST NAD83(2011).
Coordinates shown on this sheet are for informational purposes only, and are not to be used in lieu of measurements by a professional surveyor.



CORNER LOCATION
IN SECTION



NOT TO
SCALE