

# WAYNE TOWNSHIP

T 32 N, R 3 W

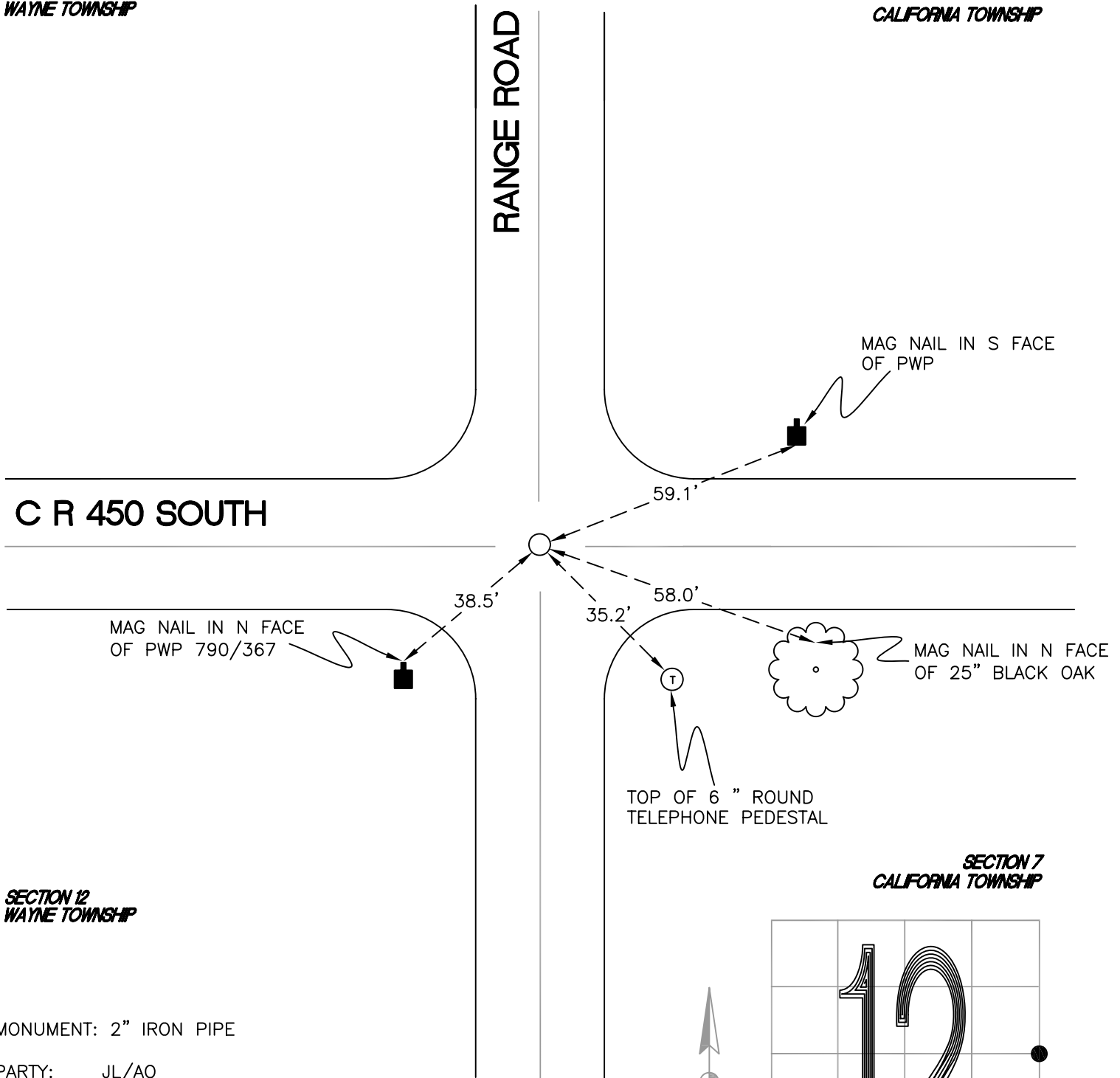
## G25

*SECTION 12  
WAYNE TOWNSHIP*

*SECTION 7  
CALIFORNIA TOWNSHIP*

RANGE ROAD

C R 450 SOUTH



*SECTION 12  
WAYNE TOWNSHIP*

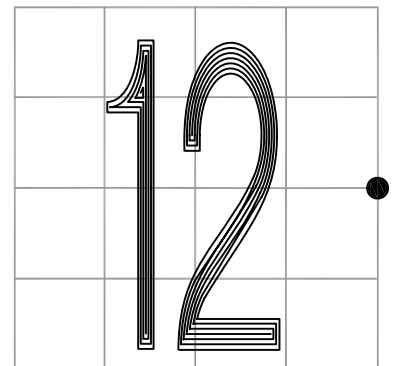
*SECTION 7  
CALIFORNIA TOWNSHIP*

MONUMENT: 2" IRON PIPE

PARTY: JL/AO

DATE: 7/23/12

COMMENTS: RR SPIKE FOUND IN 1982 BY REH, 1984 BY RLP, AND 1986 BY VHJ. RR SPIKE REPLACED IN 1988 BY IRON PIPE.



CORNER LOCATION IN THE SECTION

## G25