

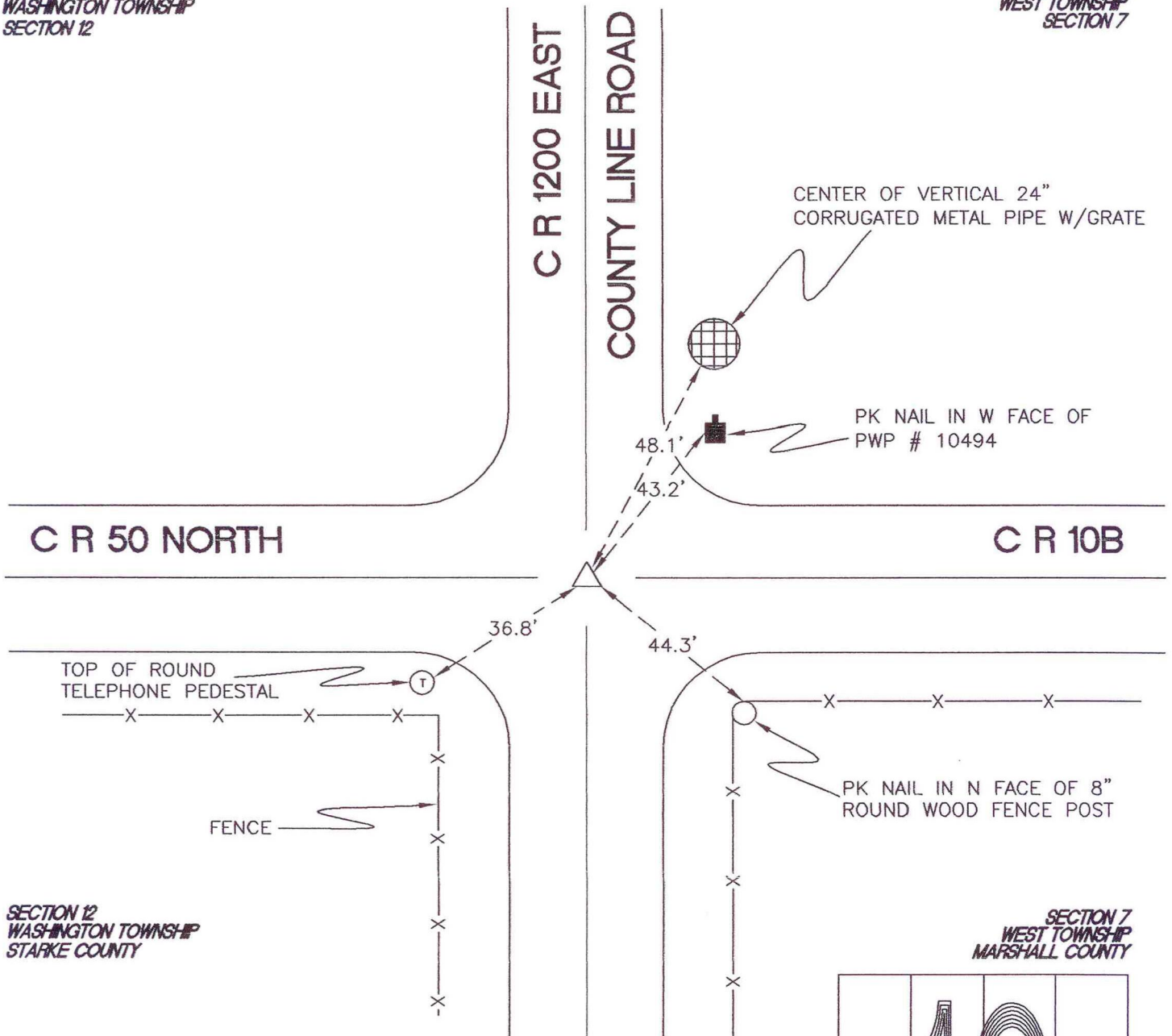
WASHINGTON TOWNSHIP

T 33 N, R 1 W

G25

STARKE COUNTY
WASHINGTON TOWNSHIP
SECTION 12

MARSHALL COUNTY
WEST TOWNSHIP
SECTION 7



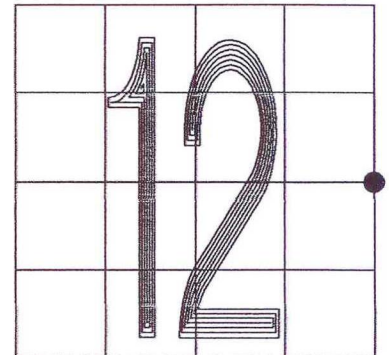
MONUMENT: ALUMINUM MONUMENT

CORNER OF: RECORD USE

PARTY: JL/PM

DATE: 1-23-2008

COMMENTS: RR SPIKE FOUND IN 1983 WAS REPLACED WITH A BRASS MARKER IN 1988 AND THEN AN ALUMINUM MONUMENT IN 2003 BY MARSHALL COUNTY.



CORNER LOCATION IN THE SECTION

G25