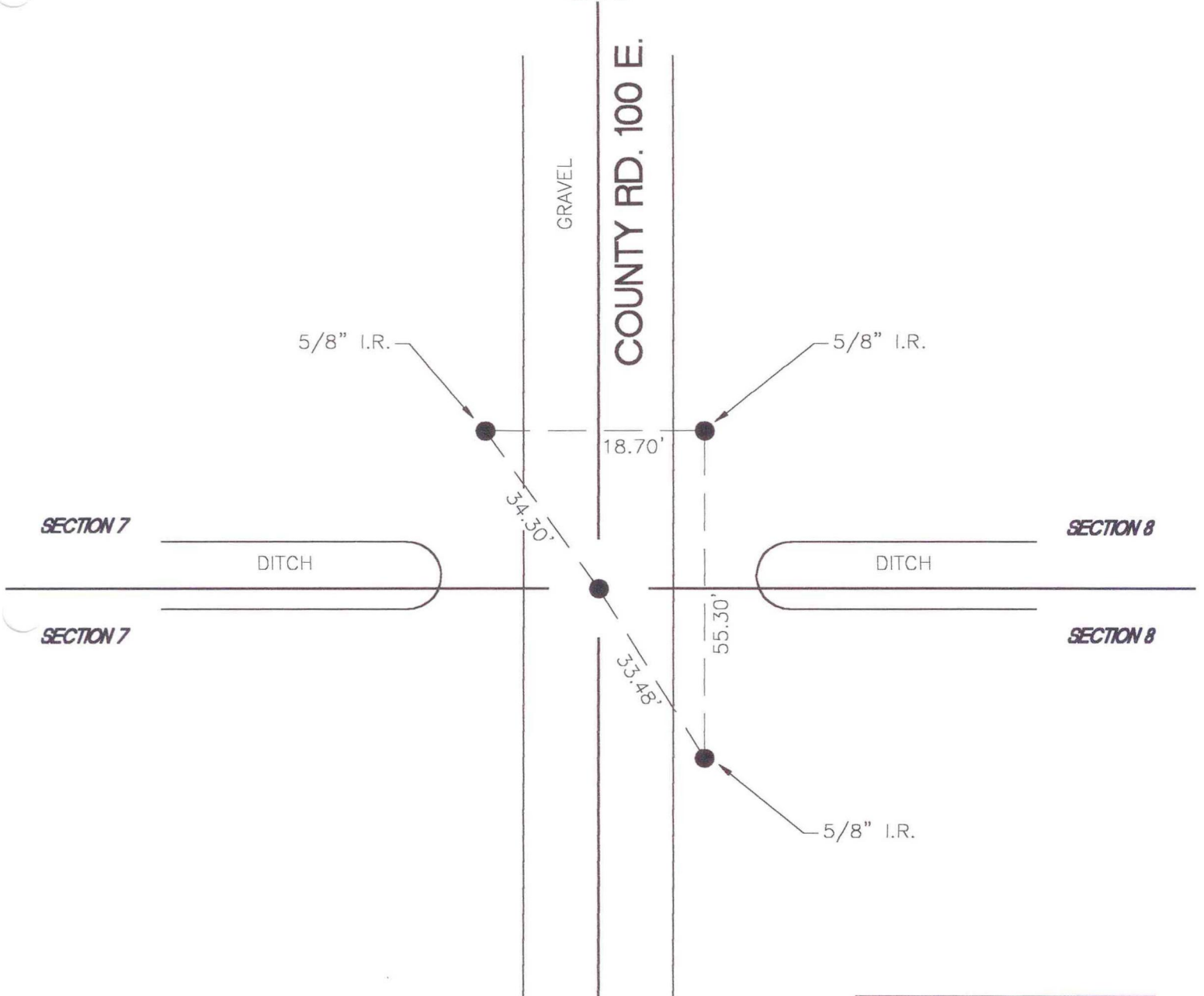


# CENTER TOWNSHIP

T 33 N, R 2 W

## G5



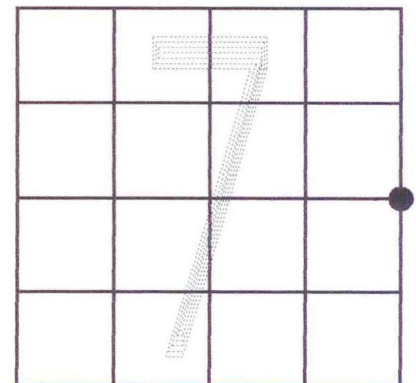
MONUMENT: 5/8" IRON ROD

CORNER OF: RECORD  USE

PARTY: DWC \ DPS

DATE: 10-11-2000

COMMENTS: IRON BAR 10'± SOUTH OF CENTERLINE OF DITCH



CORNER LOCATION IN THE SECTION