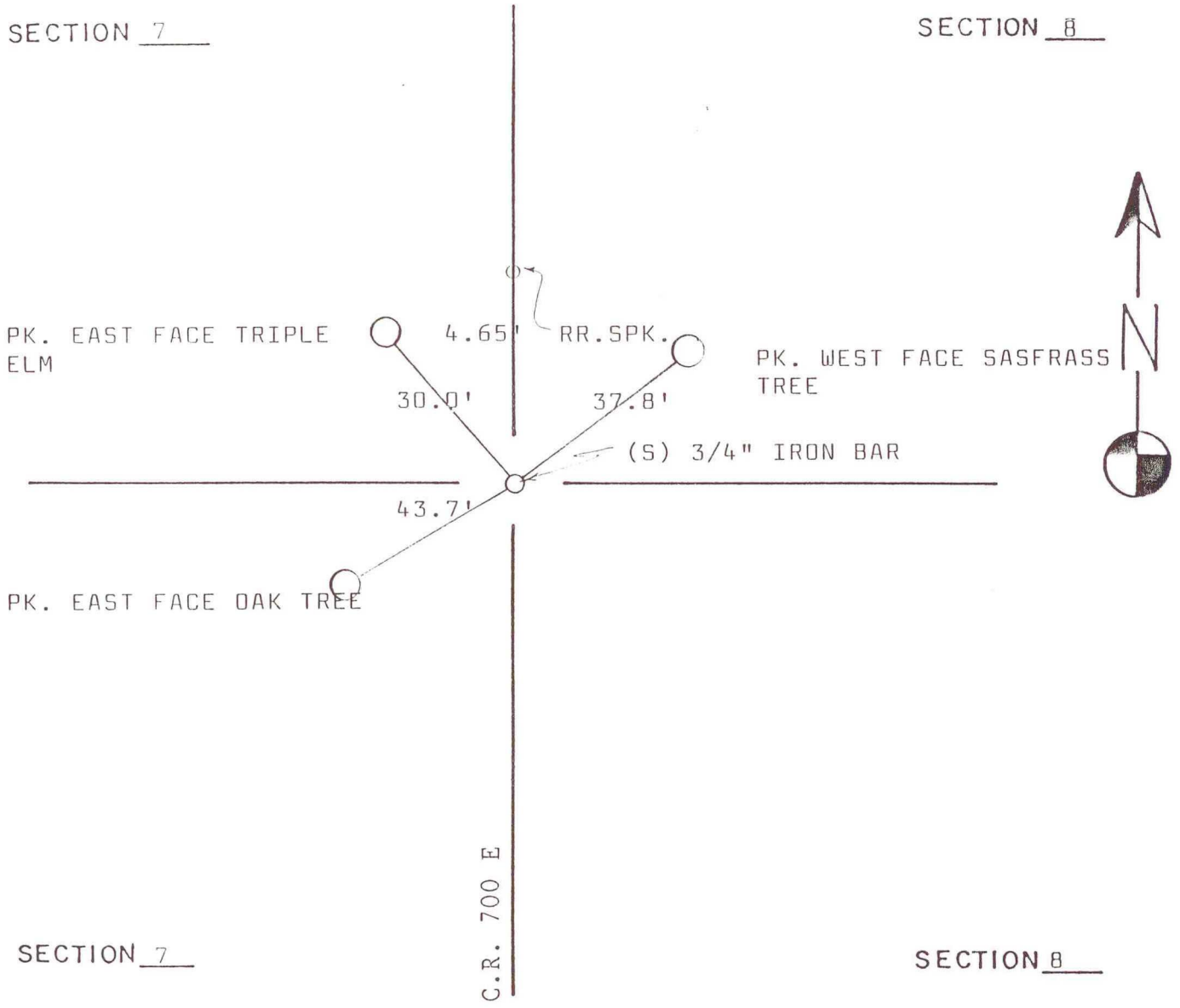


NORTH BEND TOWNSHIP

T 32 N, R 1 W

SECTION 7

SECTION 8



SECTION 7

SECTION 8

C.R. 700 E

DATE	BY	DATE	BY
3-14-89	DWC/MJ		

CORNER OF: RECORD USE

SOURCE OF INFORMATION:

TERRITORIAL ENGINEERING