

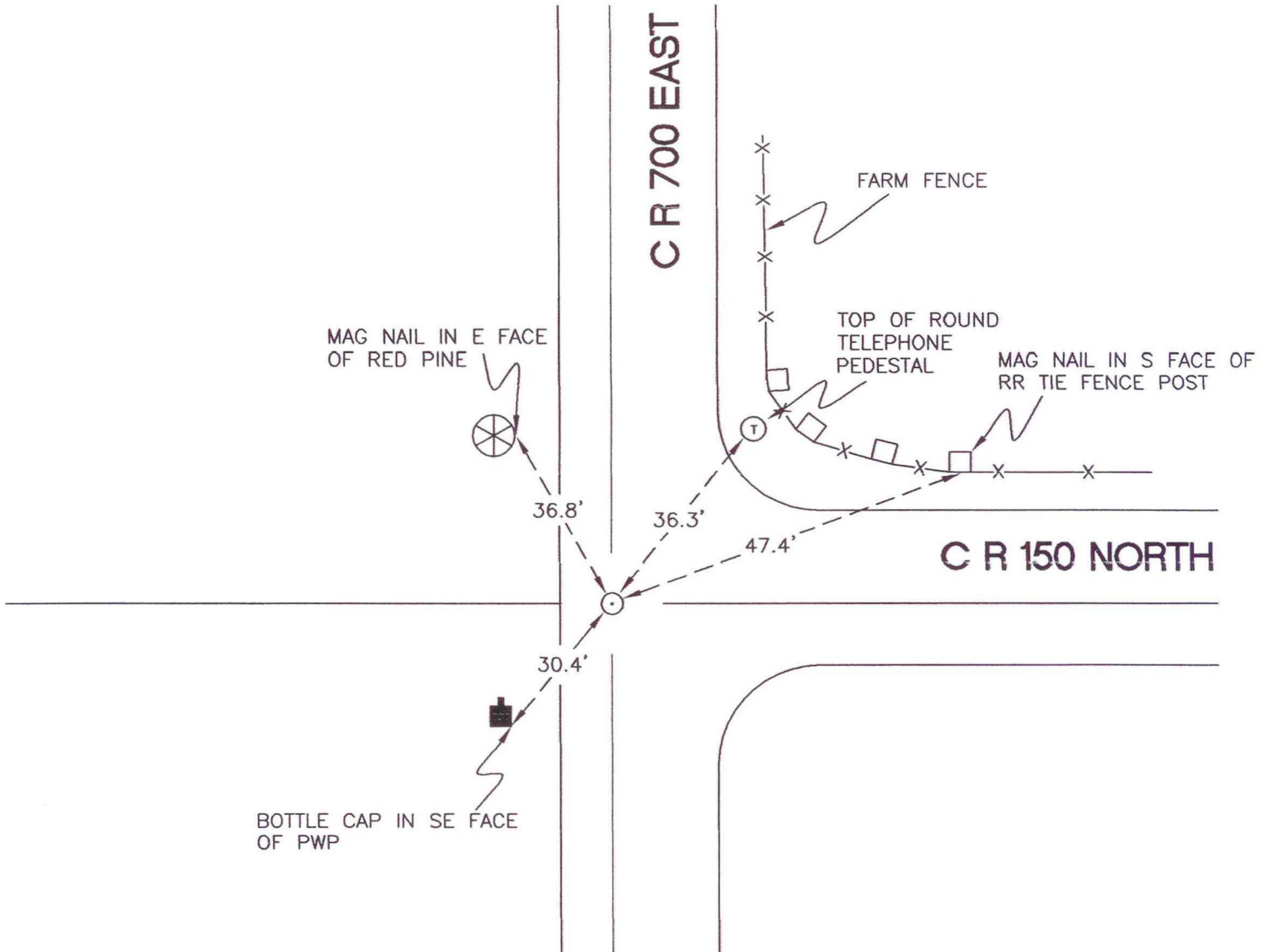
WASHINGTON TOWNSHIP

T 33 N, R 1 W

G5

SECTION 7

SECTION 8



SECTION 7

SECTION 8

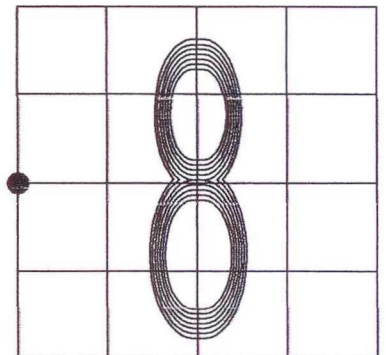
MONUMENT: RAIL BOLT

CORNER OF: RECORD USE

PARTY: JL/PM

DATE: 12-7-2007

COMMENTS: 3" BELOW GRADE; 3 1/2' W OF ϕ OF 700E;
2' S OF ϕ OF 150N



CORNER LOCATION IN THE SECTION

G5