

NORTH BEND TOWNSHIP

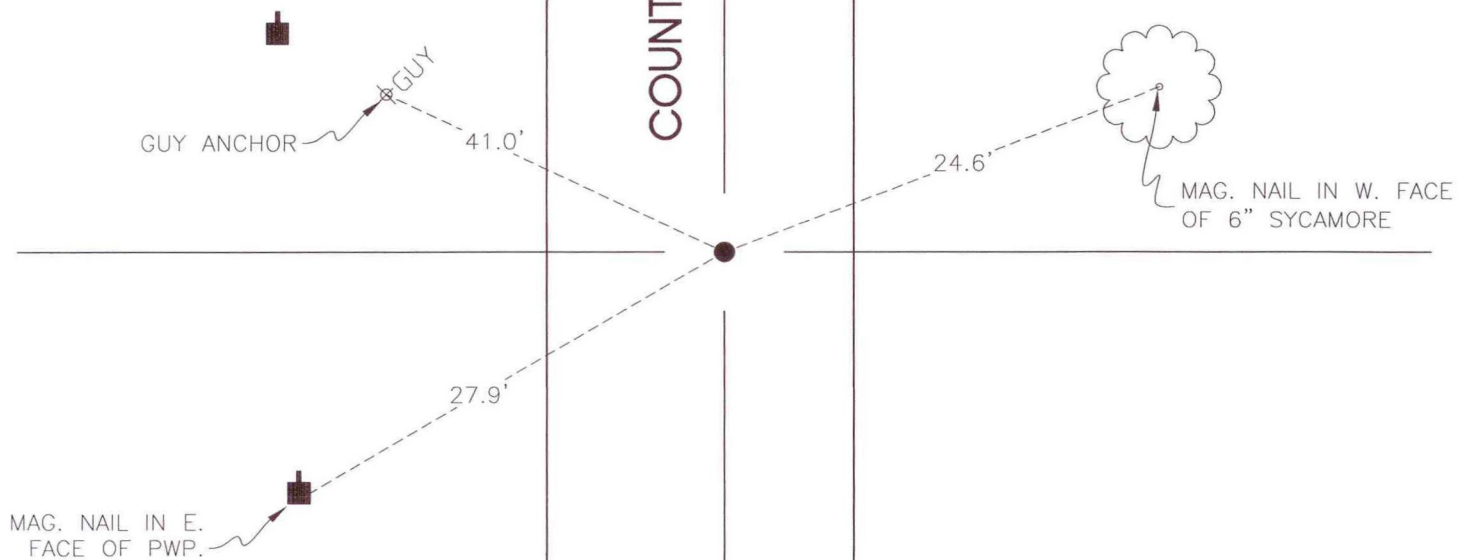
T 32 N, R 1 W

G7

SECTION 8

SECTION 8

COUNTY ROAD 750 EAST



SECTION 8

SECTION 8

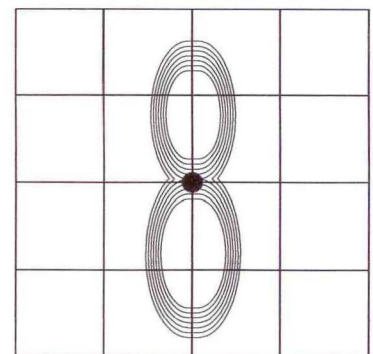
MONUMENT: $\frac{3}{4}$ " IRON ROD

CORNER OF: RECORD ☐ USE ☐

PARTY: DWC/JL

DATE: 11-26-2008

COMMENTS: 4' E. OF \odot OF C.R. 750 E.



CORNER LOCATION IN THE SECTION

G7