

NORTH BEND TOWNSHIP

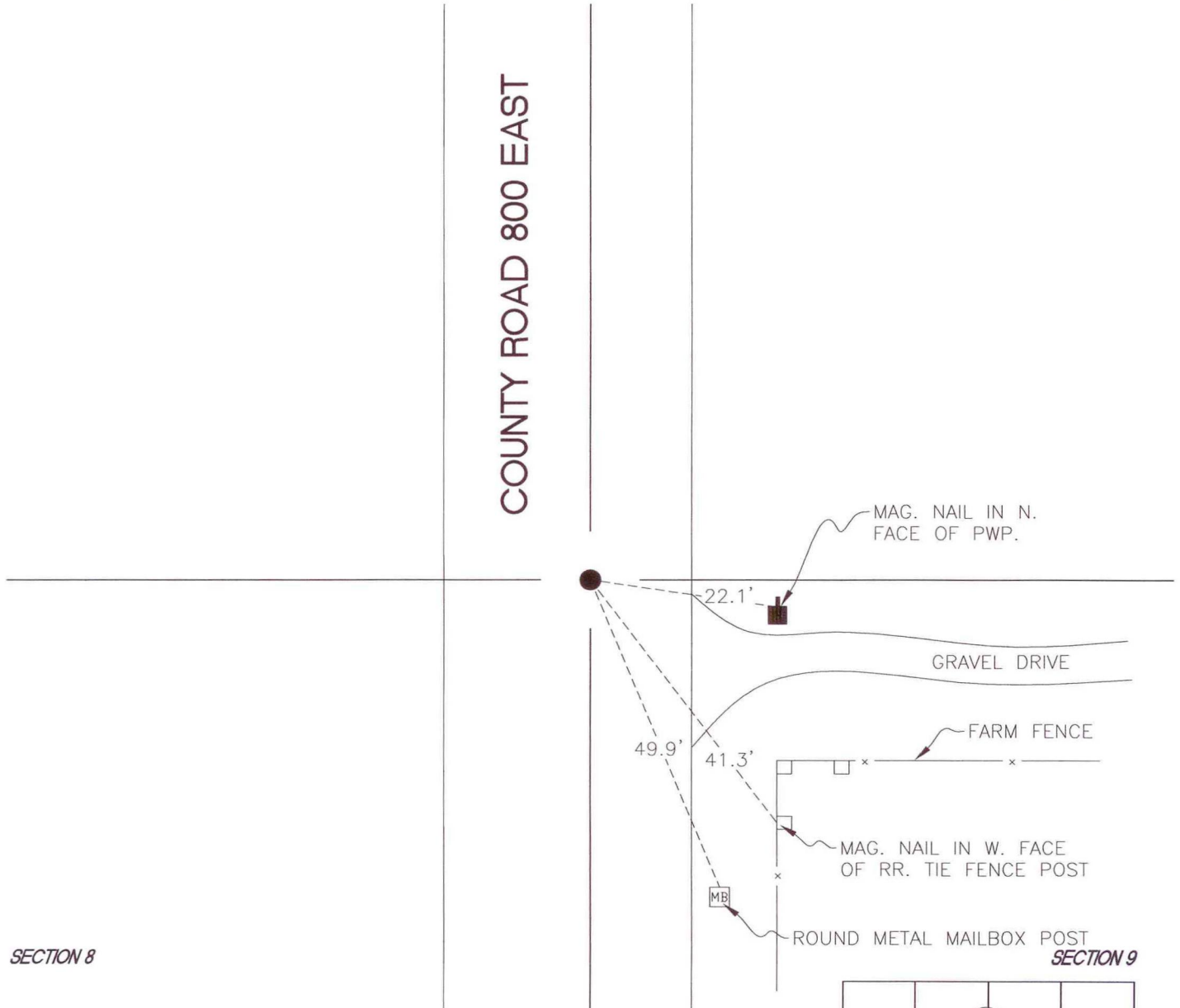
T 32 N, R 1 W

G9

SECTION 8

SECTION 9

COUNTY ROAD 800 EAST



SECTION 8

SECTION 9

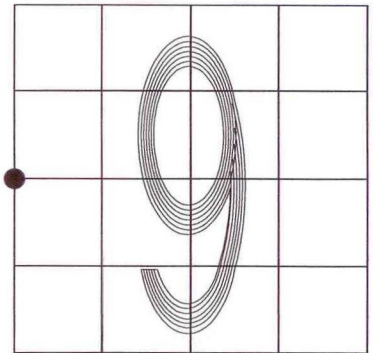
MONUMENT: 3/4" IRON ROD (DISTURBED)

CORNER OF: RECORD USE

PARTY: DWC/JL

DATE: 11-26-2008

COMMENTS: 3.5' E. OF C.C. C.R. 800 E.
MEASUREMENTS TAKEN AT
STRAIGHT SECTION OF IRON ROD.



CORNER LOCATION IN THE SECTION

G9