

OREGON TOWNSHIP

T 34 N, R 1 W

H25

C.R. 1200 EAST
COUNTY LINE ROAD

PONTIUS DITCH

STARKE COUNTY
OREGON TOWNSHIP
SECTION 12

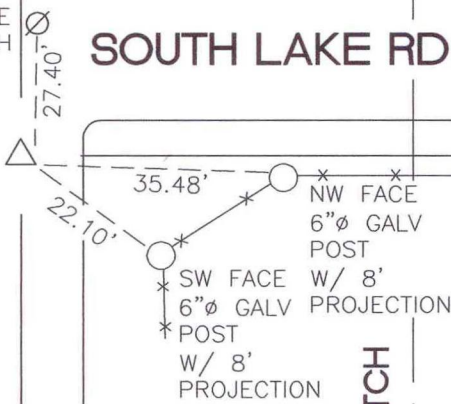
RR SPIKE
FLUSH

SOUTH LAKE RD

MARSHALL COUNTY
POLK TOWNSHIP
SECTION 7

SECTION 12
OREGON TOWNSHIP
STARKE COUNTY

SECTION 7
POLK TOWNSHIP
MARSHALL COUNTY



PONTIUS DITCH

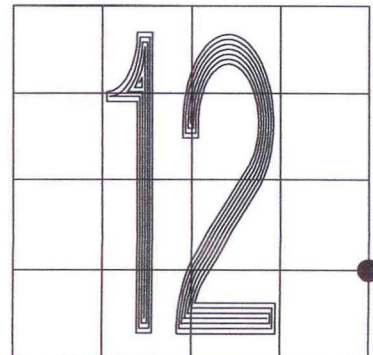
MONUMENT: SEE COMMENTS

CORNER OF: RECORD USE

PARTY: VHJ/JR

DATE: 3-31-05

COMMENTS:
(F) BOLT FLUSH WITH GRADE. BOLT WAS
SET BY TERRITORIAL ENGR, LLC IN JUNE, 2004



CORNER LOCATION IN THE SECTION