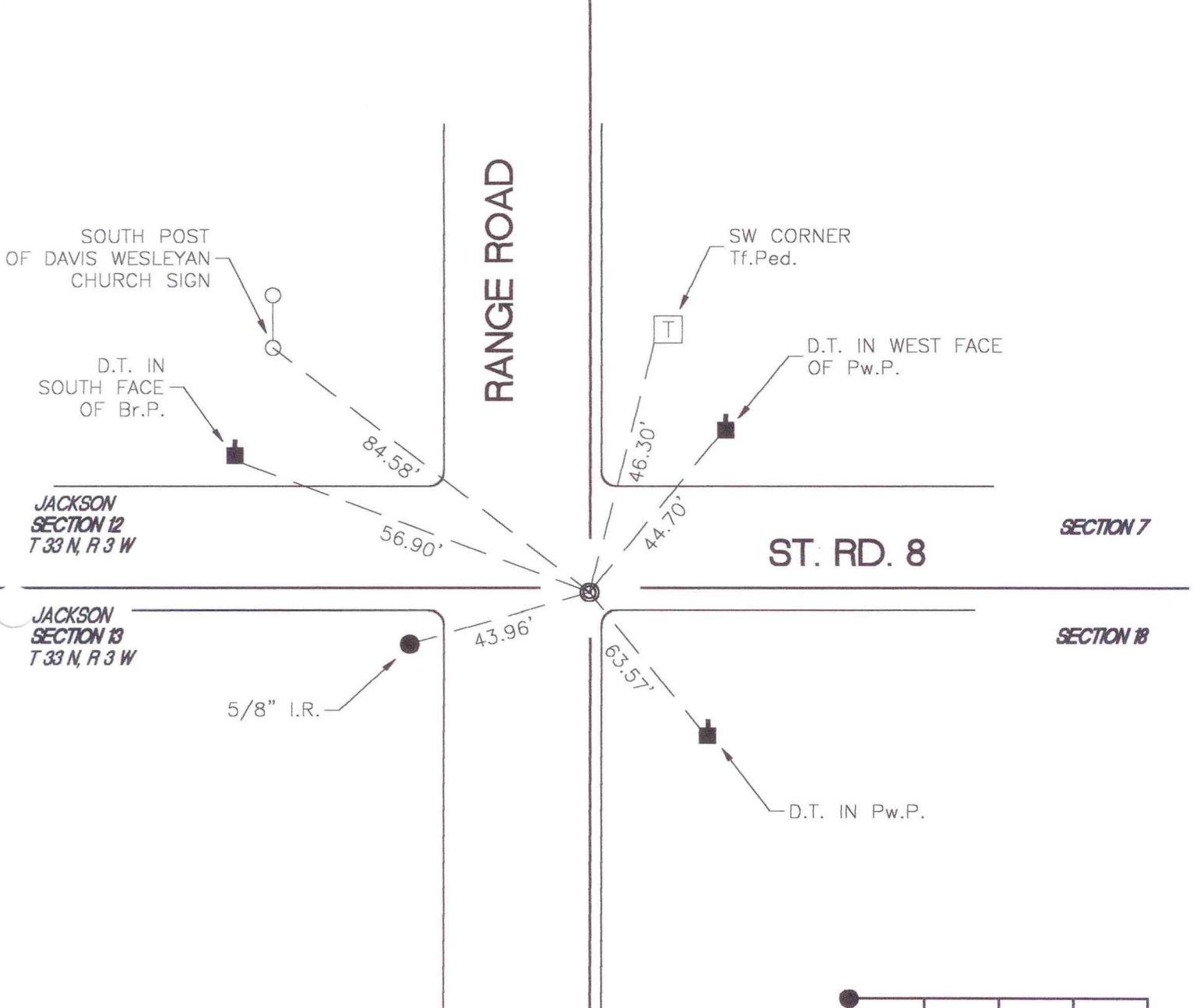


# CENTER TOWNSHIP

T 33 N, R 2 W

## J1



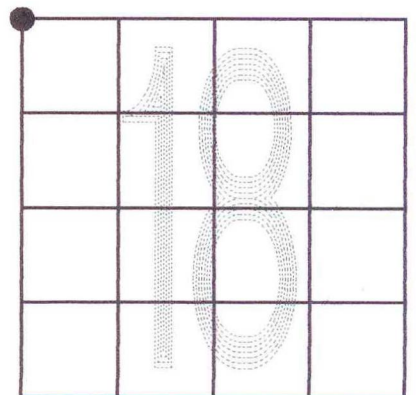
MONUMENT: CROSSING BOLT

CORNER OF: RECORD  USE

PARTY: DWC \ DPS

DATE: 10-10-2000

COMMENTS: BOLT IN EAST BOUND LANE  
0.3'± NORTH OF SOUTH EDGE  
OF ASPHALT



CORNER LOCATION IN THE SECTION