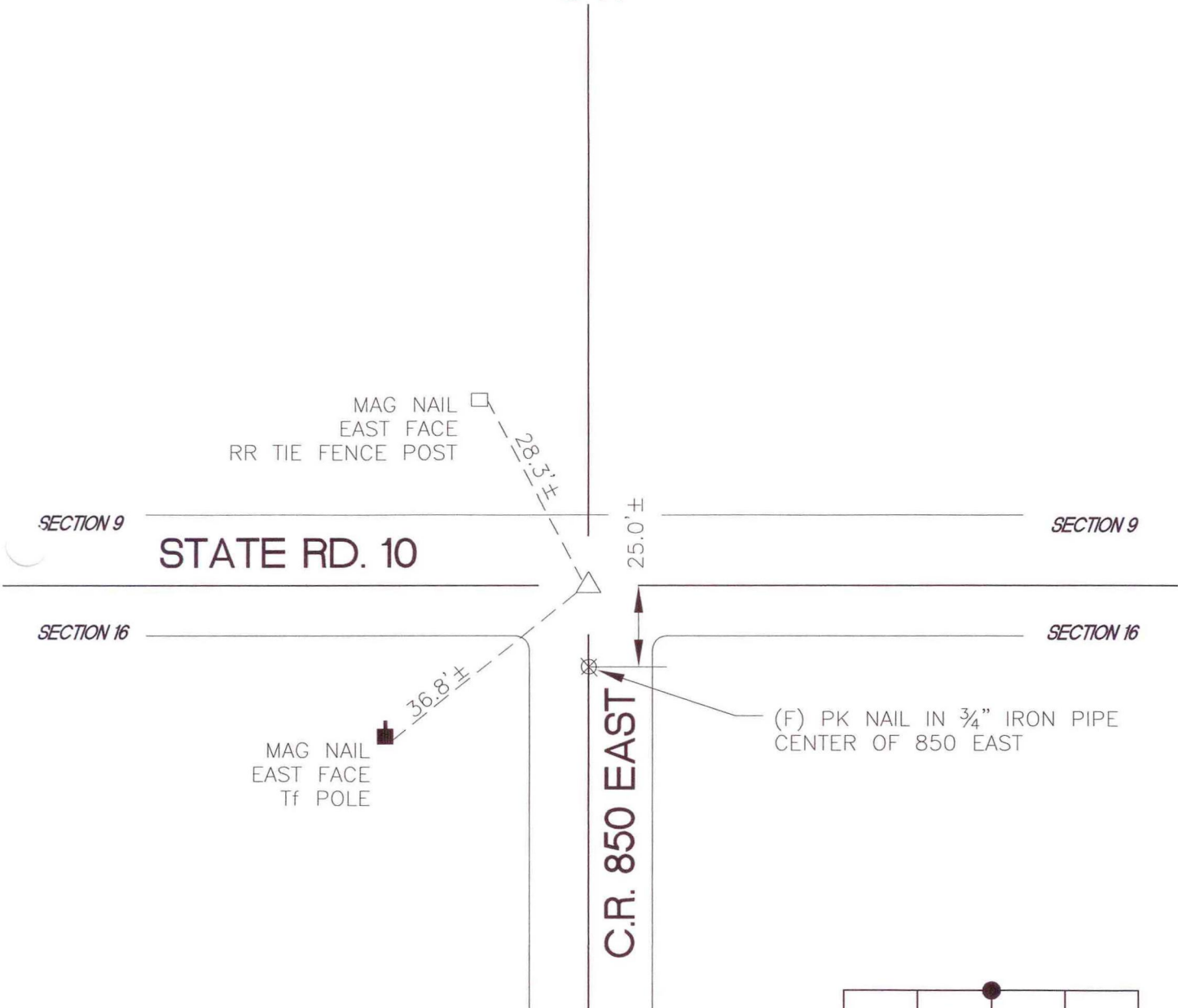


NORTH BEND TOWNSHIP

T 32 N, R 1 W

J11



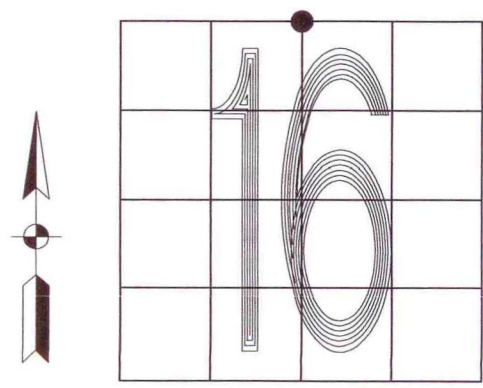
MONUMENT: (F) 1/2" IRON ROD IN MONU BOX

CORNER OF: RECORD USE

PARTY: DPS/JL

DATE: 12-15-05

COMMENTS: RLP/AW FOUND AN X-BOLT ON 12-01-83



J11

CORNER LOCATION IN THE SECTION