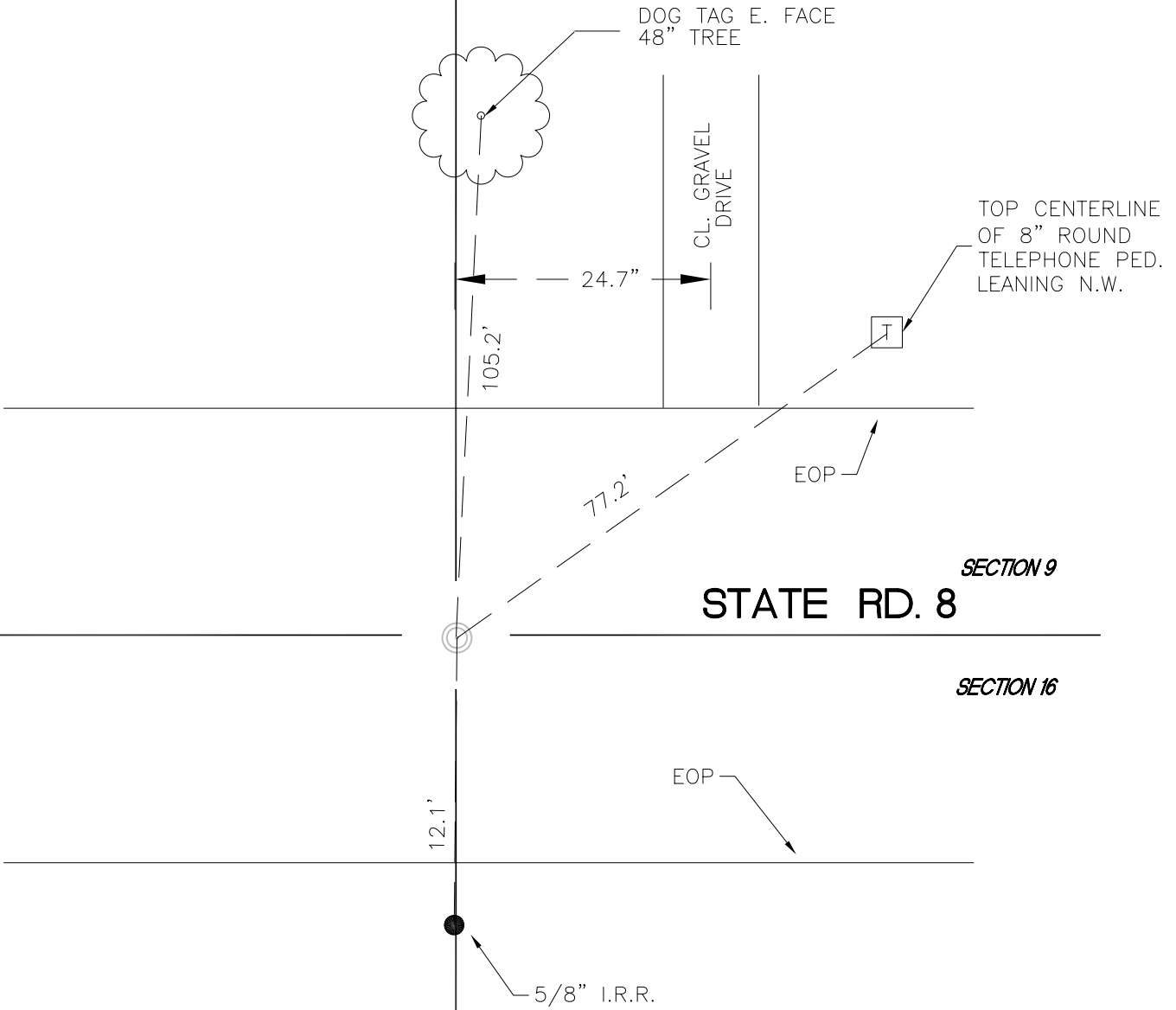


CENTER TOWNSHIP

T 33 N, R 2 W

J11



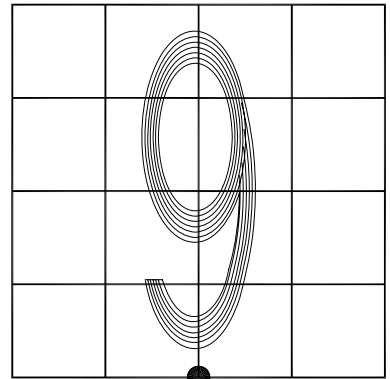
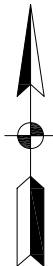
MONUMENT: CROSSING BOLT

CORNER OF: RECORD USE

PARTY: DPS/AJR

DATE: NOVEMBER 2017

COMMENTS: POINT LOCATED 3.0' SOUTH
OF CENTERLINE OF ROAD



CORNER LOCATION IN THE SECTION