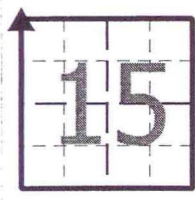


SECTION CORNER REFERENCE

J 13

J13

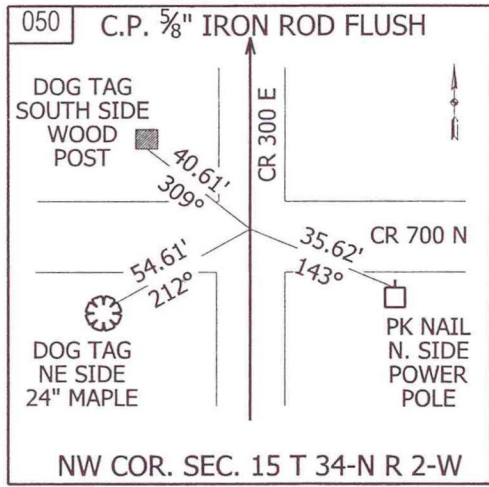
SECTION 15 TOWNSHIP 34-N RANGE 2-W  
(Description of Corner Location) NORTHWEST CORNER  
DAVIS TWP.,  
STARKE COUNTY, INDIANA



COORDINATES  
 NAD '83 IN E. ZONE  
 NAD '83 IN W. ZONE  
 LOCAL GRID  
Units: US FEET  
Pt. #: 050  
N: 17,197.159  
E: 4,688.229

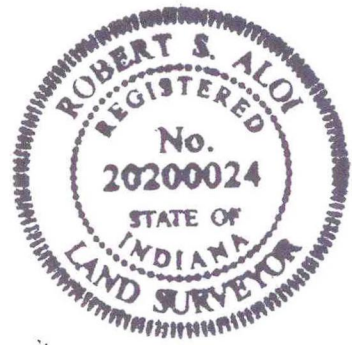
TYPE OF MON.: C.P. 5/8" IRON ROD  
DEPTH: FLUSH  
UNCERTAINTY:  
BY: COUNTY SURVEYOR  
DATE: JULY 2009  
DES.NO.: 0500068

STATE FORM 40180 (R2/2-04)



REFERENCED BY: INDOT

COMMENTS: REFERENCES AND MONUMENT  
SAME AS IN 1985.



J13