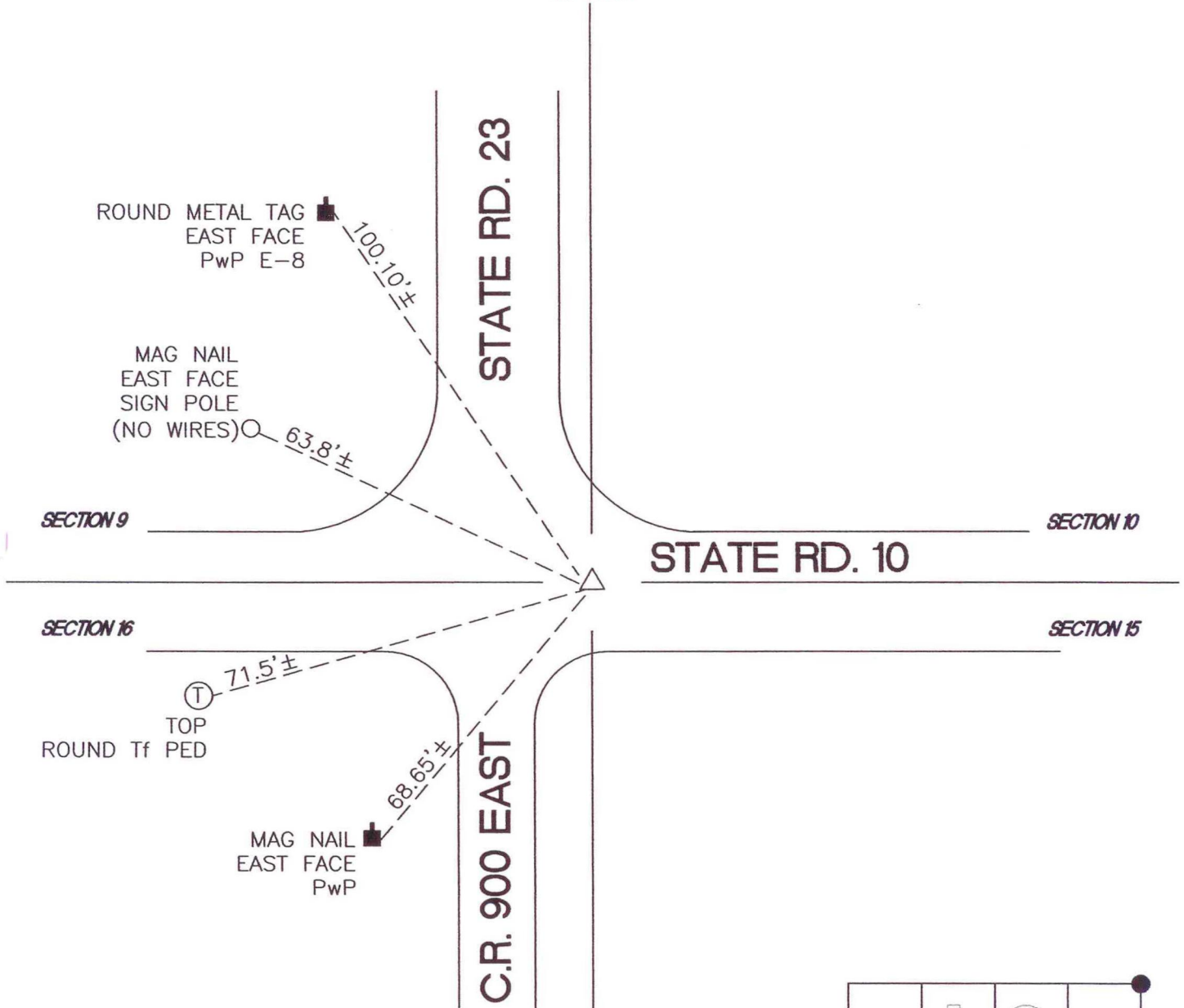


NORTH BEND TOWNSHIP

T 32 N, R 1 W

J13



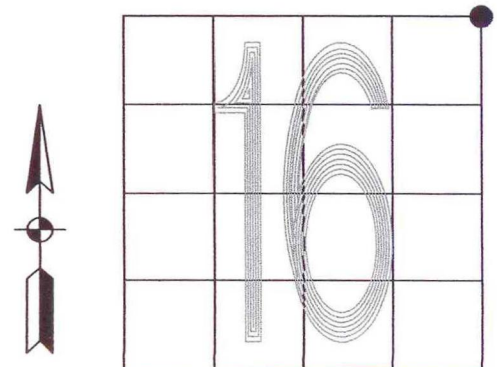
MONUMENT: (F) 3/4" IRON ROD IN MONU BOX

CORNER OF: RECORD ☐ USE ☒

PARTY: DPS/JL

DATE: 12/05

COMMENTS: PREVIOUS MONUMENT WAS SET
BY ISHD IN JUNE, 1982, RECORDED
AS AN IRON PIN SET FROM COUNTY REF. RECORDS



CORNER LOCATION IN THE SECTION