

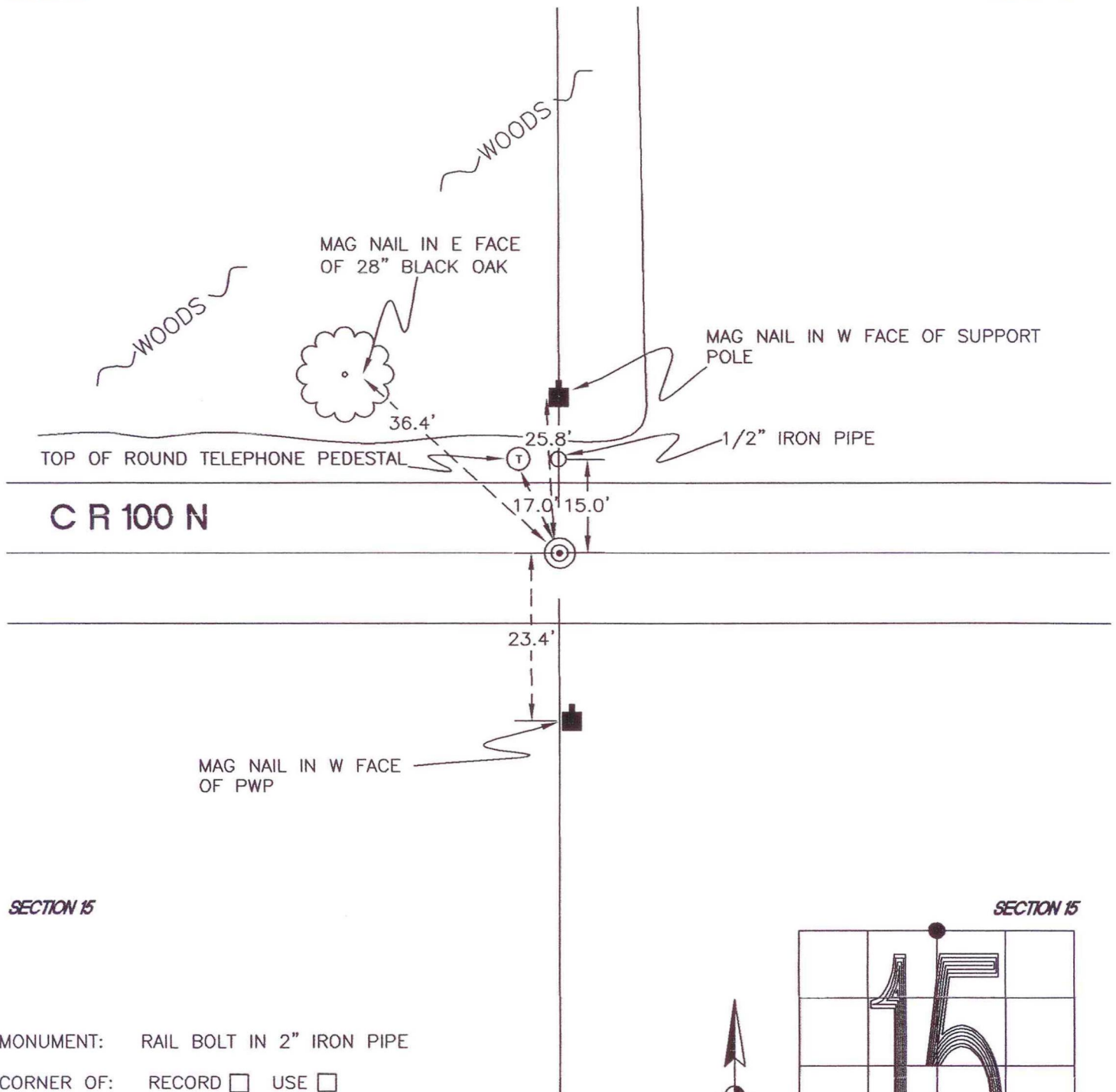
WASHINGTON TOWNSHIP

T 33 N, R 1 W

J15

SECTION 10

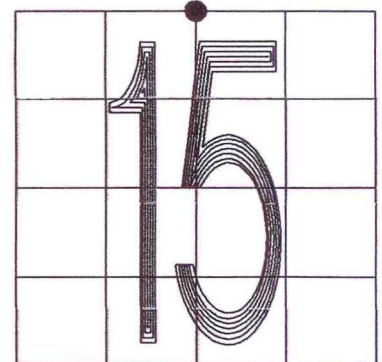
SECTION 10



SECTION 15

SECTION 15

MONUMENT: RAIL BOLT IN 2" IRON PIPE
CORNER OF: RECORD USE
PARTY: JL/PM
DATE: 11-15-2007
COMMENTS: 2' N OF \odot OF 100N



CORNER LOCATION IN THE SECTION

J15