

SECTION CORNER REFERENCE

J17

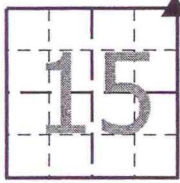
J17

SECTION 15 TOWNSHIP 34-N RANGE 2-W

(Description of Corner Location) NORTHEAST CORNER

DAVIS TWP.,

STARKE COUNTY, INDIANA



COORDINATES

- NAD '83 IN E. ZONE
- NAD '83 IN W. ZONE
- LOCAL GRID
- Units: US FEET
- Pt.#: 054
- N: 17,198.562
- E: 9,987.369

TYPE OF MON.: HARRISON MARKER (TOP MISSING)

DEPTH: FLUSH

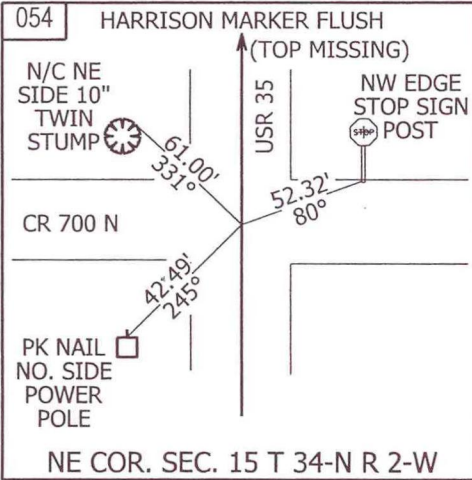
UNCERTAINTY:

BY: COUNTY SURVEYOR

DATE: JULY 2009

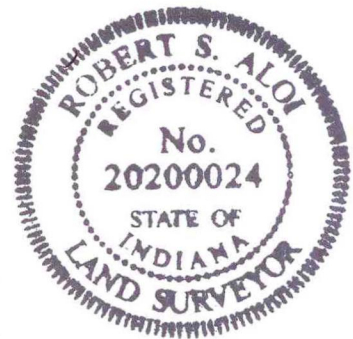
DES.NO.: 0500068

STATE FORM 40180 (R2/2-04)



REFERENCED BY: INDOT

COMMENTS: MONUMENT SAME AS IN 1976



J17