

# CALIFORNIA TOWNSHIP

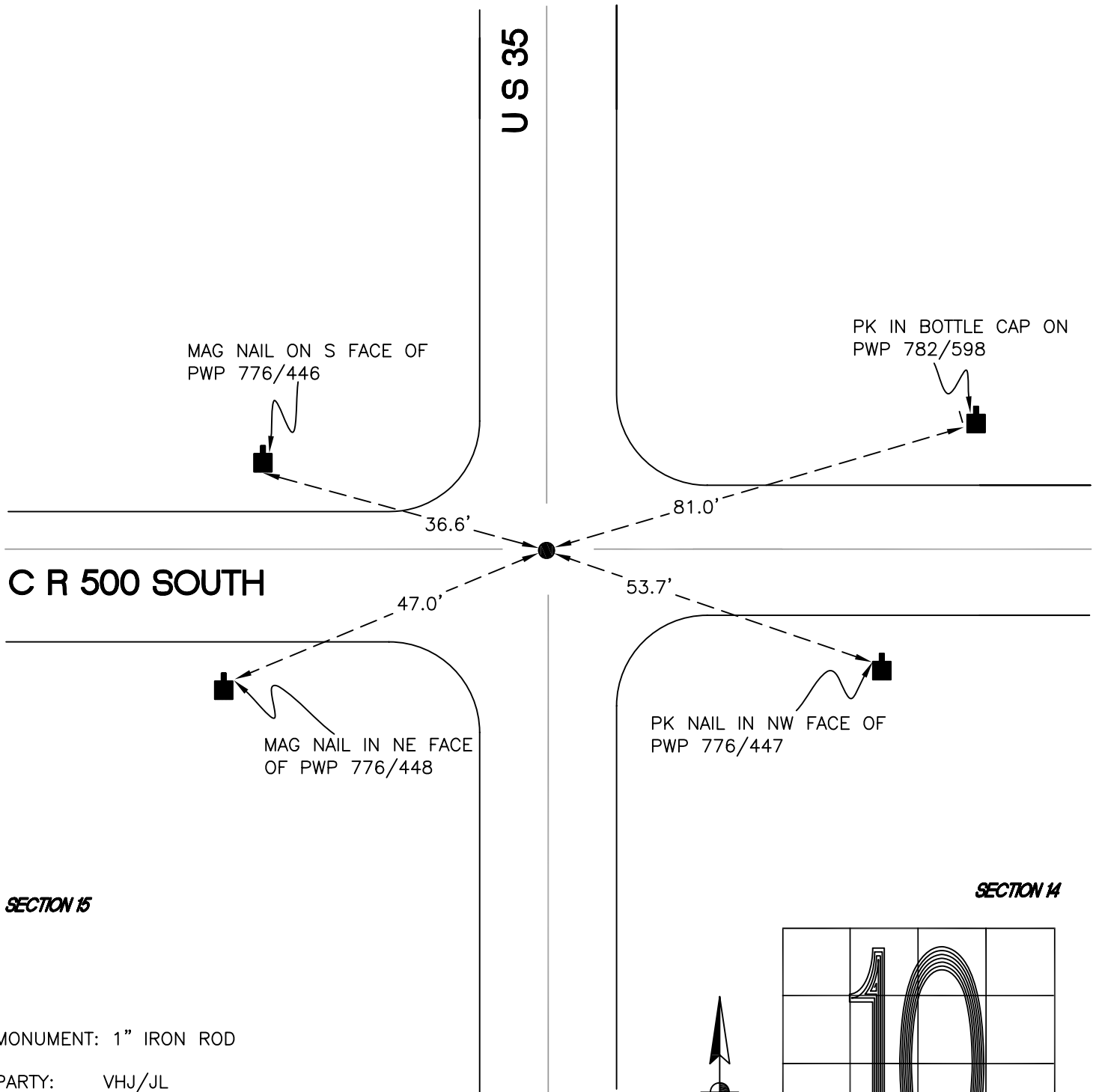
T 34 N, R 2 W

## J17

SECTION 10

SECTION 11

US 35



CR 500 SOUTH

MAG NAIL ON S FACE OF  
PWP 776/446

PK IN BOTTLE CAP ON  
PWP 782/598

36.6'

81.0'

SECTION 15

SECTION 14

MAG NAIL IN NE FACE  
OF PWP 776/448

PK NAIL IN NW FACE OF  
PWP 776/447

47.0'

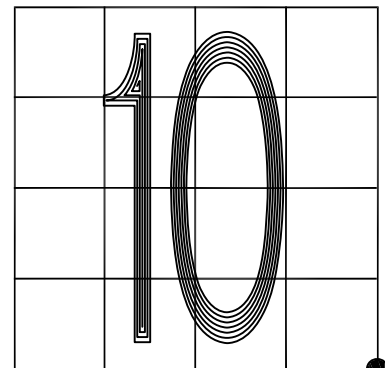
53.7'

MONUMENT: 1" IRON ROD

PARTY: VHJ/JL

DATE: 2/7/2013

COMMENTS: MONUMENT IS 3' N OF  $\phi$  OF CR 500  
TO THE E.  
INDOT RESET MONUMENT 0.1' N OF  
CORNER LOCATION IN 2006.



CORNER LOCATION IN THE SECTION

## J17