

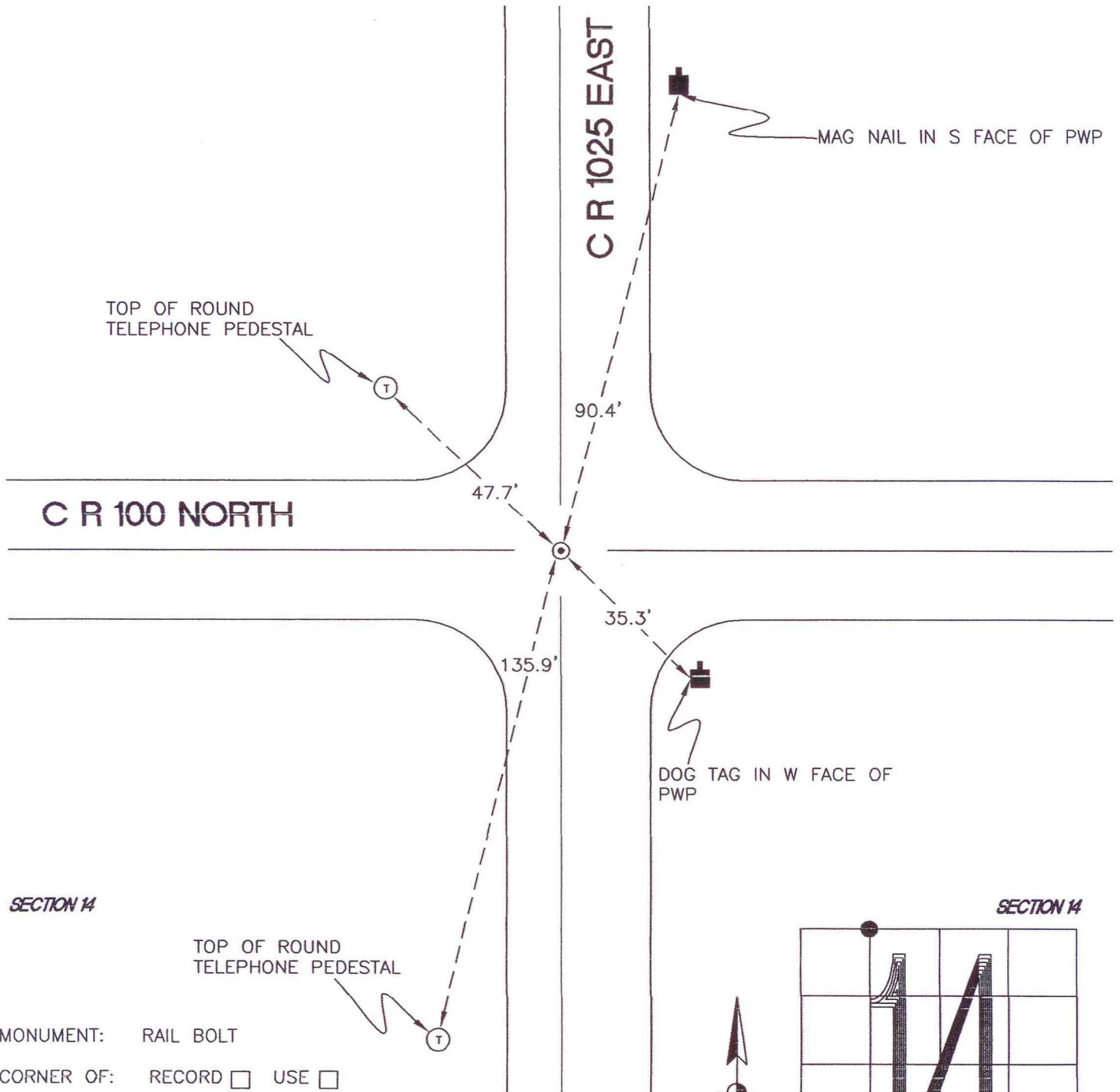
WASHINGTON TOWNSHIP

T 33 N, R 1 W

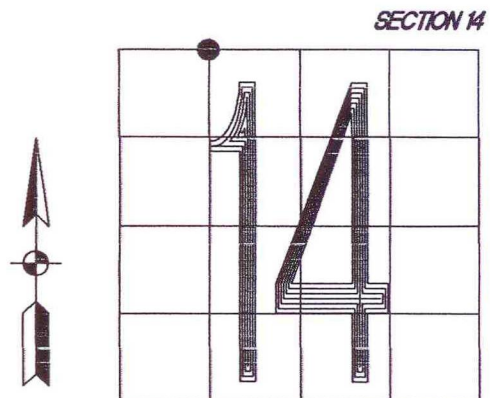
J18

SECTION 11

SECTION 11



MONUMENT: RAIL BOLT
CORNER OF: RECORD USE
PARTY: JL/PM
DATE: 11-15-2007
COMMENTS: 1" BELOW GRADE; 2' W OF C OF 1025E



CORNER LOCATION IN THE SECTION

J18