

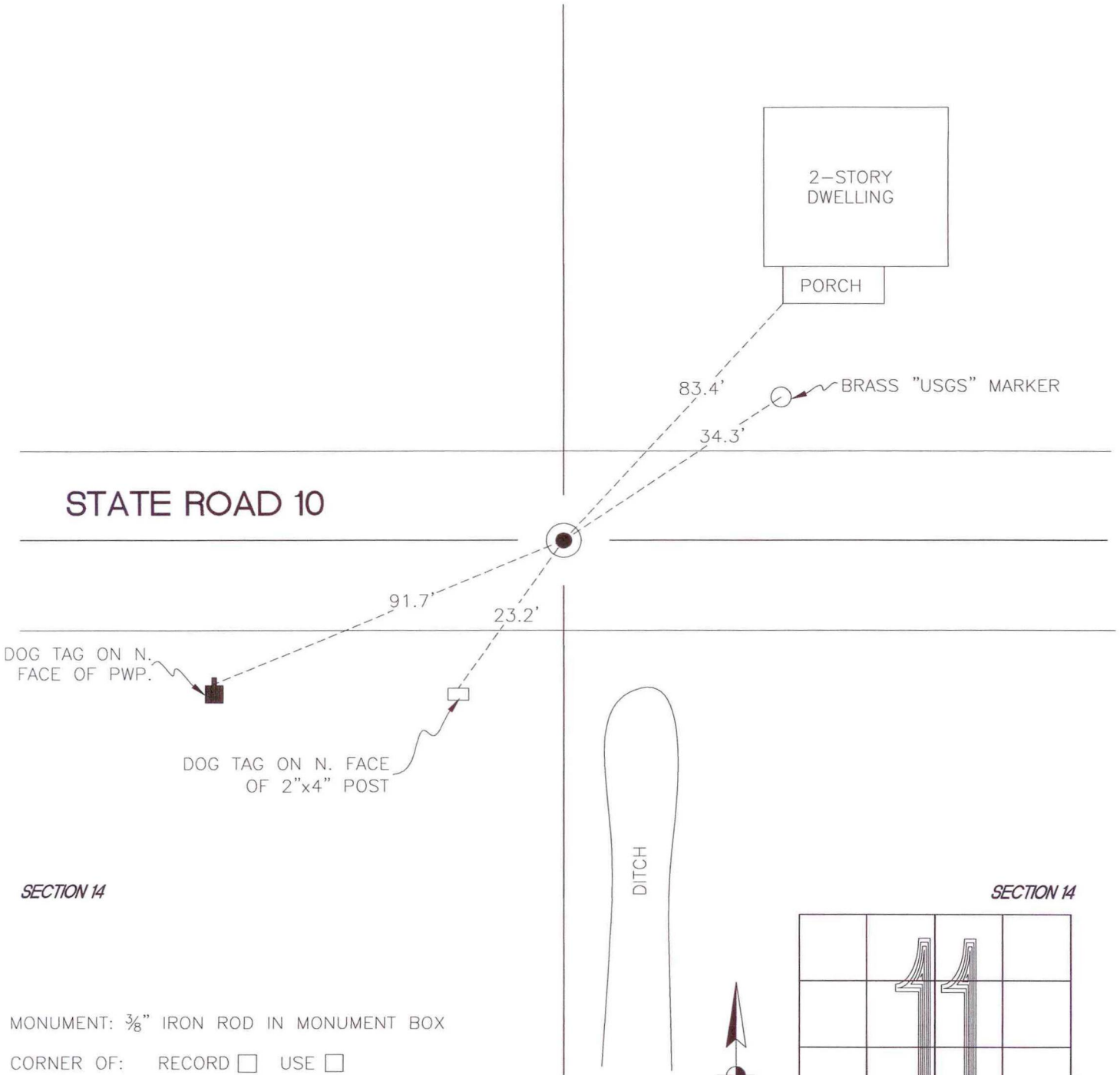
# NORTH BEND TOWNSHIP

T 32 N, R 1 W

## J19

SECTION 11

SECTION 11



STATE ROAD 10

2-STORY DWELLING

PORCH

83.4'

34.3'

BRASS "USGS" MARKER

DOG TAG ON N. FACE OF PWP.

91.7'

23.2'

DOG TAG ON N. FACE OF 2"x4" POST

DITCH

SECTION 14

SECTION 14

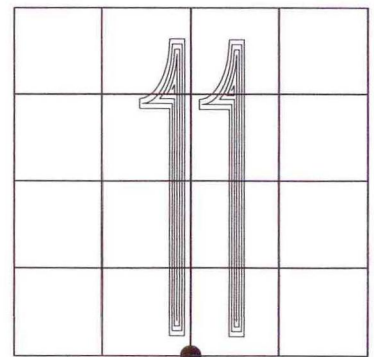
MONUMENT:  $\frac{3}{8}$ " IRON ROD IN MONUMENT BOX

CORNER OF: RECORD  USE

PARTY: DWC/JL

DATE: 11-25-2008

COMMENTS:



CORNER LOCATION IN THE SECTION

## J19