

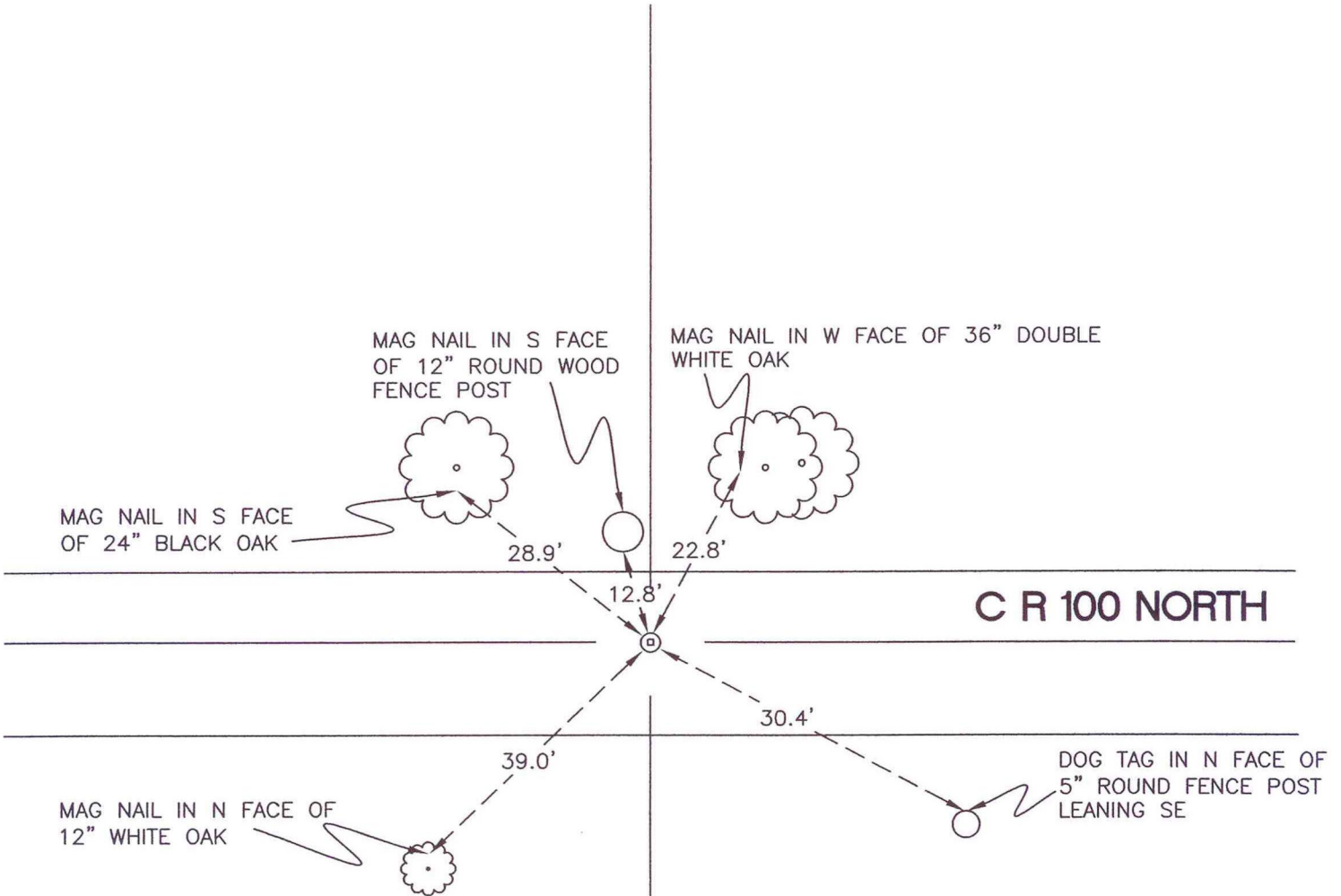
# WASHINGTON TOWNSHIP

T 33 N, R 1 W

## J19

SECTION 11

SECTION 11



SECTION 14

SECTION 14

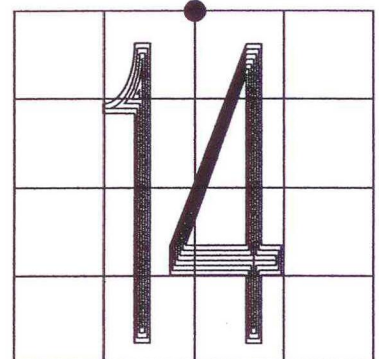
MONUMENT: RAILROAD CROSSING BOLT

CORNER OF: RECORD  USE

PARTY: DPS/JL

DATE: 4-8-2008

COMMENTS: 10" BELOW GRADE; 1.5' N OF  $\text{C}$  OF 100N. CORNER USED BY TERRITORIAL ENGINEERING IN SURVEYS # 81S138 AND # 83S188.



CORNER LOCATION IN THE SECTION

# J19