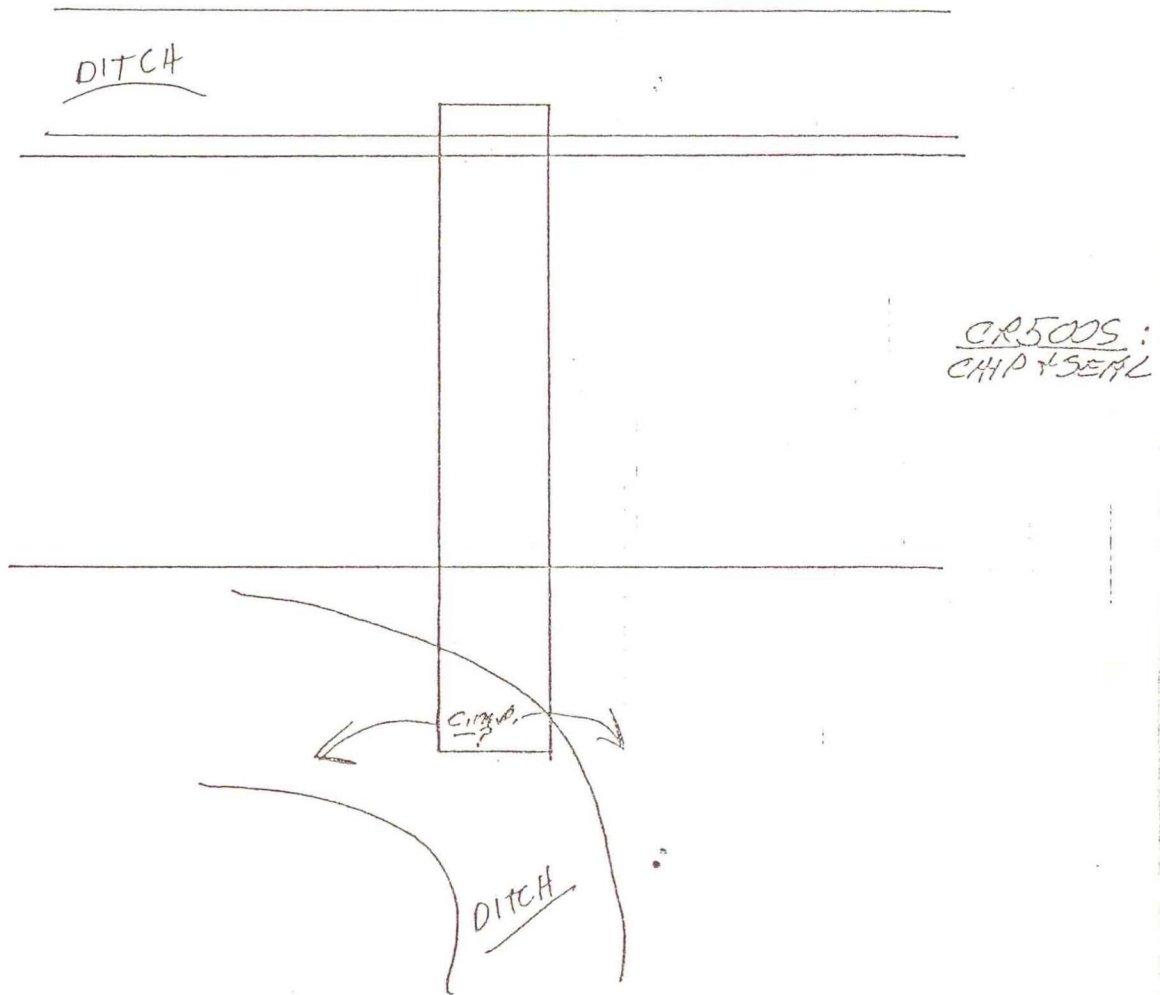


1. MON. 23 JULY '90 OLA RLS 0537 P. IMAYER  $\phi$ .  
FOUND NO METAL SOUNDING; POSITION DESTROYED  
BY C.M.P. & DRAINAGE CONSTRUCTION + DITCH  
SPOILS ARE IN ROADWAY OVER MUCK WHICH WOULD  
NECESSITATE A 6' CUT; WILL NOT DIG.



SCALE



NORTH  $\frac{1}{4}$  COR. SEC. 14

NO MONUMENT

J-19