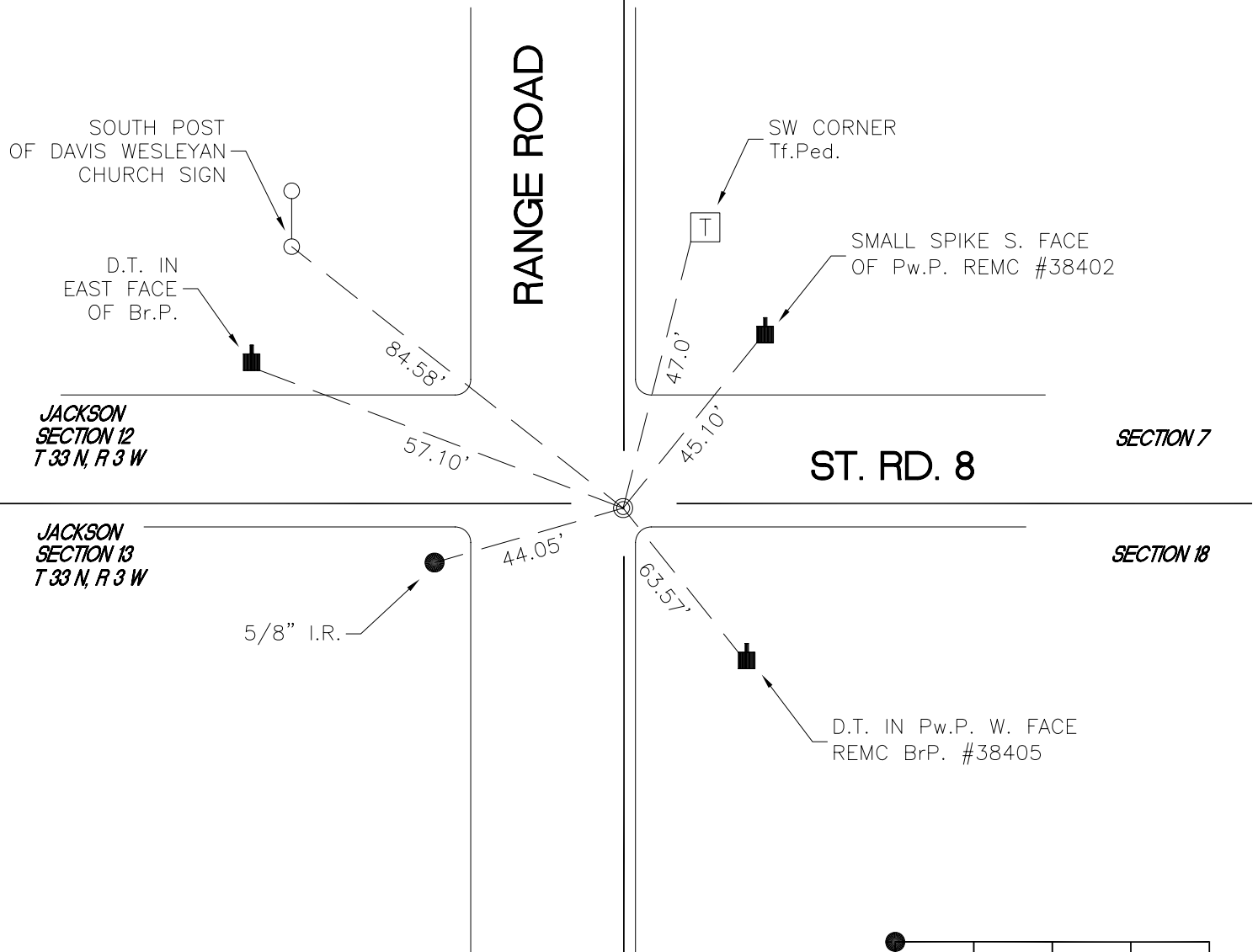


CENTER TOWNSHIP

T 33 N, R 2 W

J1



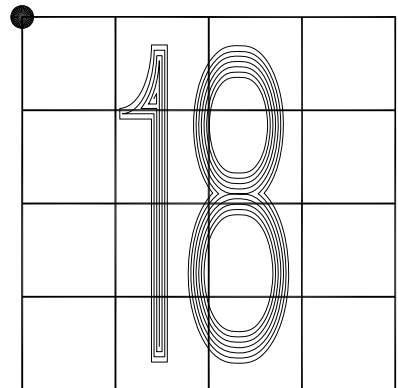
MONUMENT: CROSSING BOLT

CORNER OF: RECORD USE

PARTY: DPS/AJR

DATE: NOVEMBER 2017

COMMENTS: BOLT IN EAST BOUND LANE
3.3'± NORTH OF SOUTH EDGE
OF ASPHALT



CORNER LOCATION IN THE SECTION