

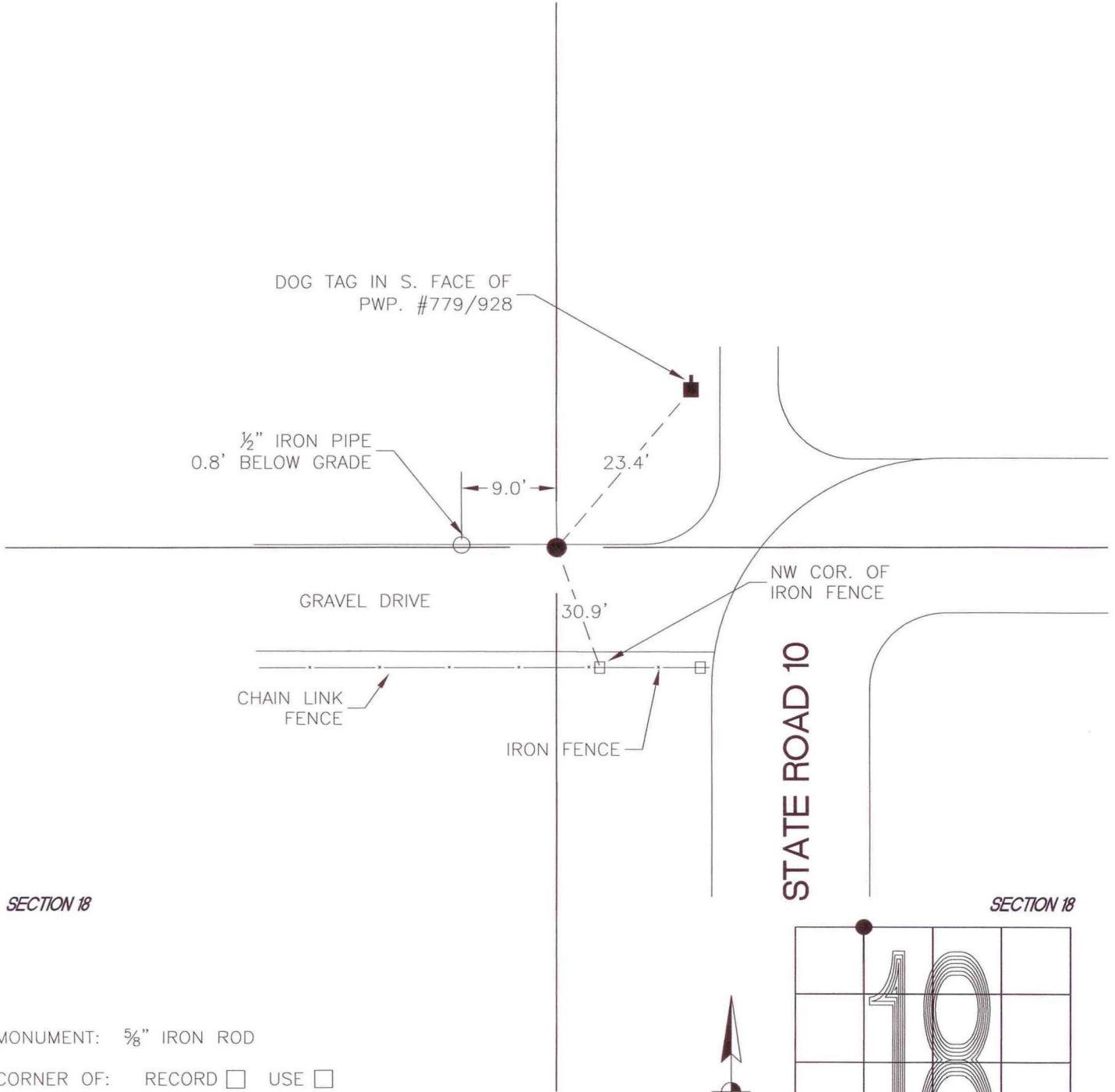
NORTH BEND TOWNSHIP

T 32 N, R 1 W

J2

SECTION 7

SECTION 7



SECTION 18

SECTION 18

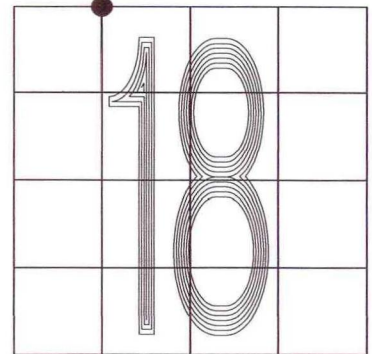
MONUMENT: 5/8" IRON ROD

CORNER OF: RECORD USE

PARTY: DWC/JL

DATE: 11-26-2008

COMMENTS: BETWEEN STONES 1.0' BELOW GRADE



CORNER LOCATION IN THE SECTION

J2