

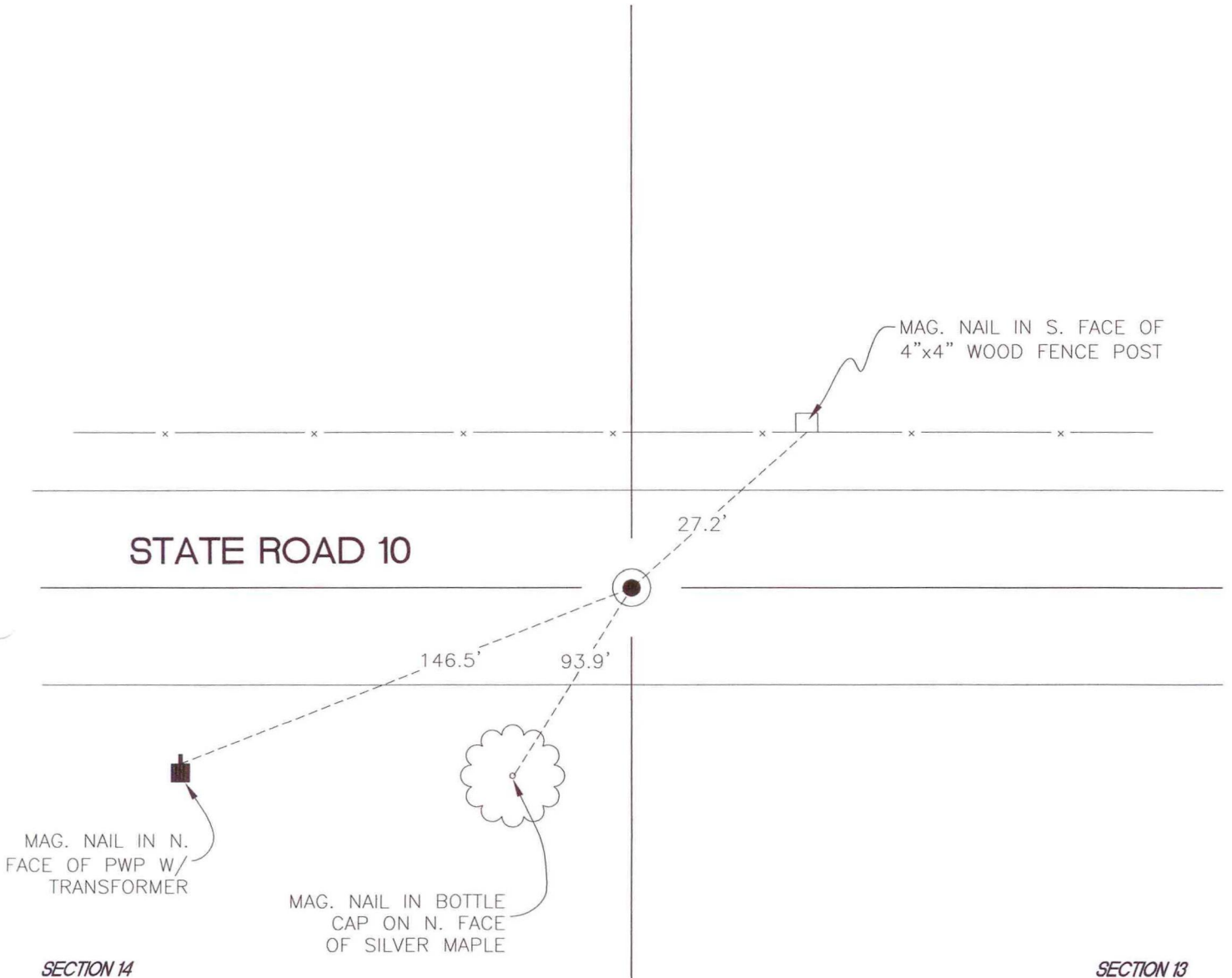
NORTH BEND TOWNSHIP

T 32 N, R 1 W

J21

SECTION 11

SECTION 12



SECTION 14

SECTION 13

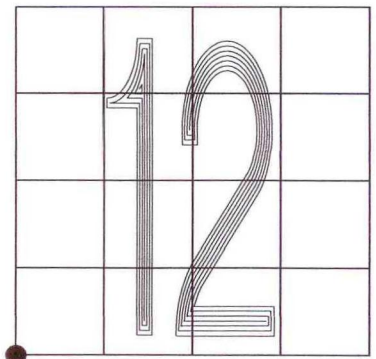
MONUMENT: $\frac{3}{8}$ " IRON ROD IN MONUMENT BOX

CORNER OF: RECORD USE

PARTY: DWC/JL

DATE: 11-25-08

COMMENTS:



CORNER LOCATION IN THE SECTION

J21