

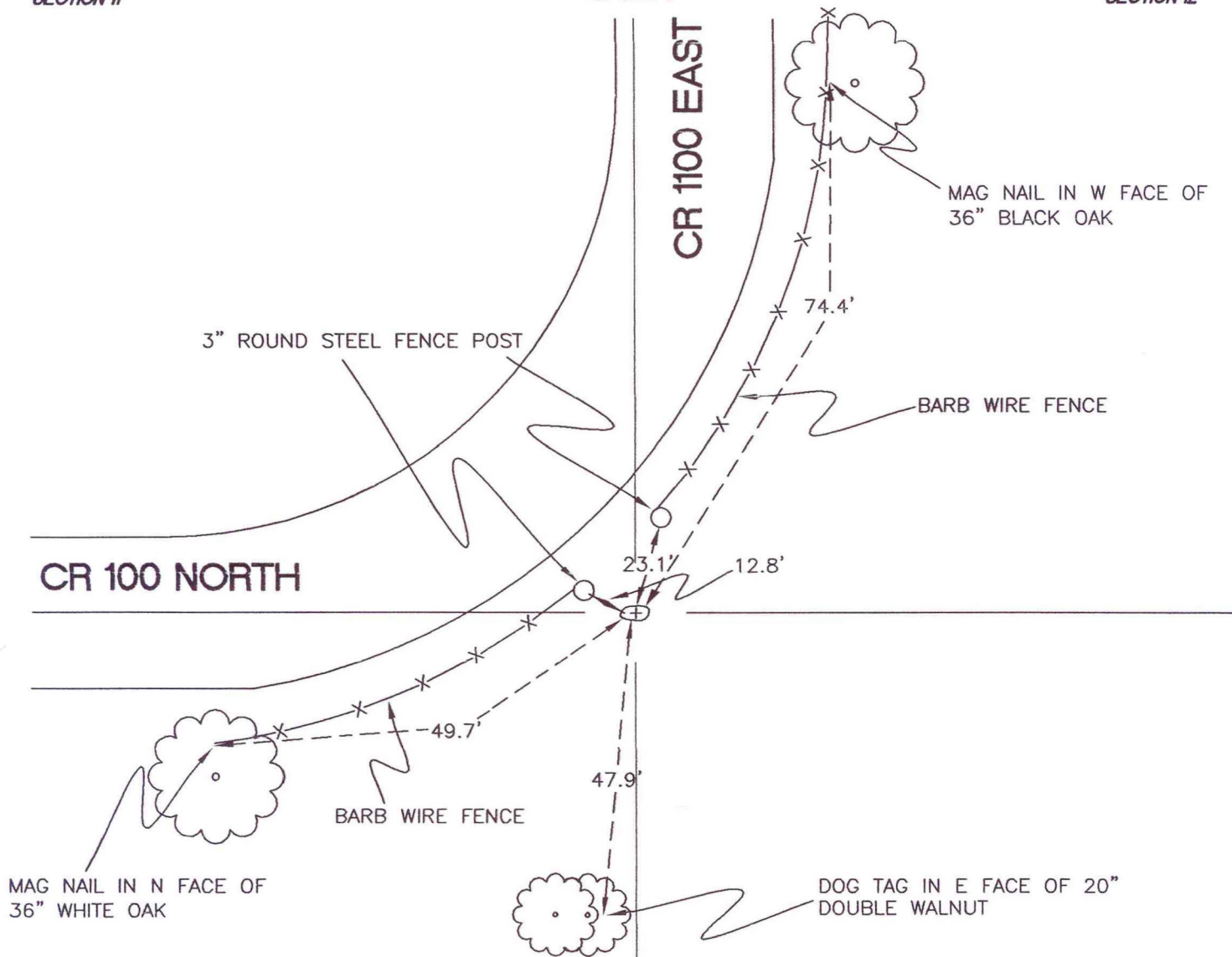
# WASHINGTON TOWNSHIP

T 33 N, R 1 W

## J21

SECTION 11

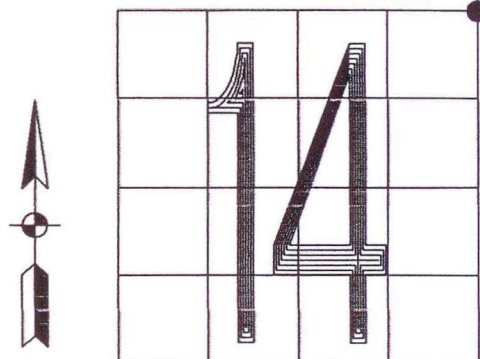
SECTION 12



SECTION 14

SECTION 13

MONUMENT: STONE W/ + CHISELED IN TOP  
CORNER OF: RECORD  USE   
PARTY: JL/PM  
DATE: 12-3-2007  
COMMENTS: 6" BELOW GRADE, 10' W OF C OF 1100E  
MAG NAIL WRAPPED IN WIRE PUT IN HOLE



CORNER LOCATION IN THE SECTION

# J21