

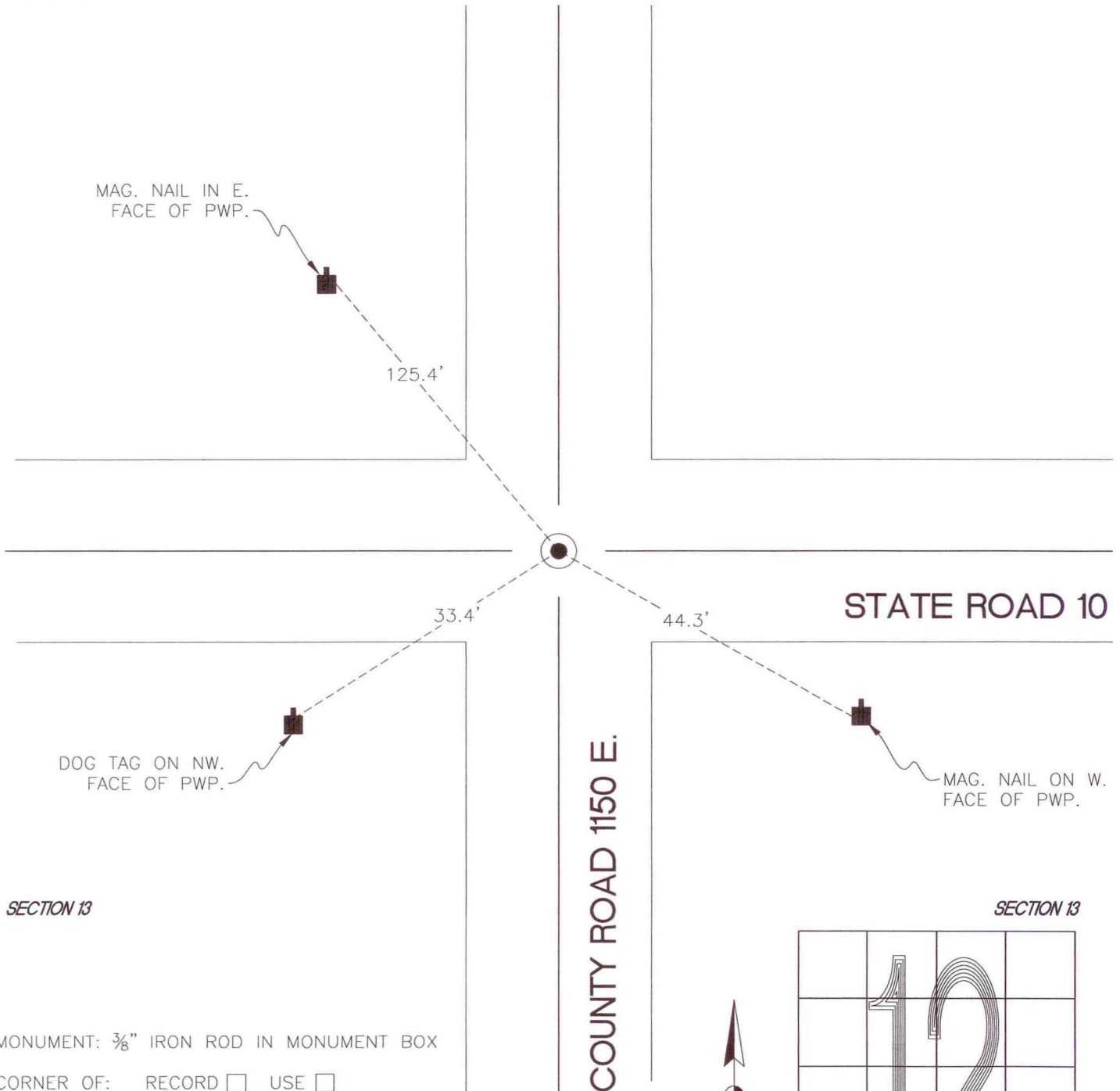
# NORTH BEND TOWNSHIP

T 32 N, R 1 W

## J23

SECTION 12

SECTION 12



SECTION 13

SECTION 13

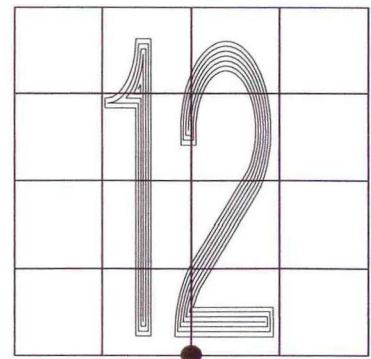
MONUMENT:  $\frac{3}{8}$ " IRON ROD IN MONUMENT BOX

CORNER OF: RECORD  USE

PARTY: DWC/JL

DATE: 11-25-08

COMMENTS:



CORNER LOCATION IN THE SECTION

## J23