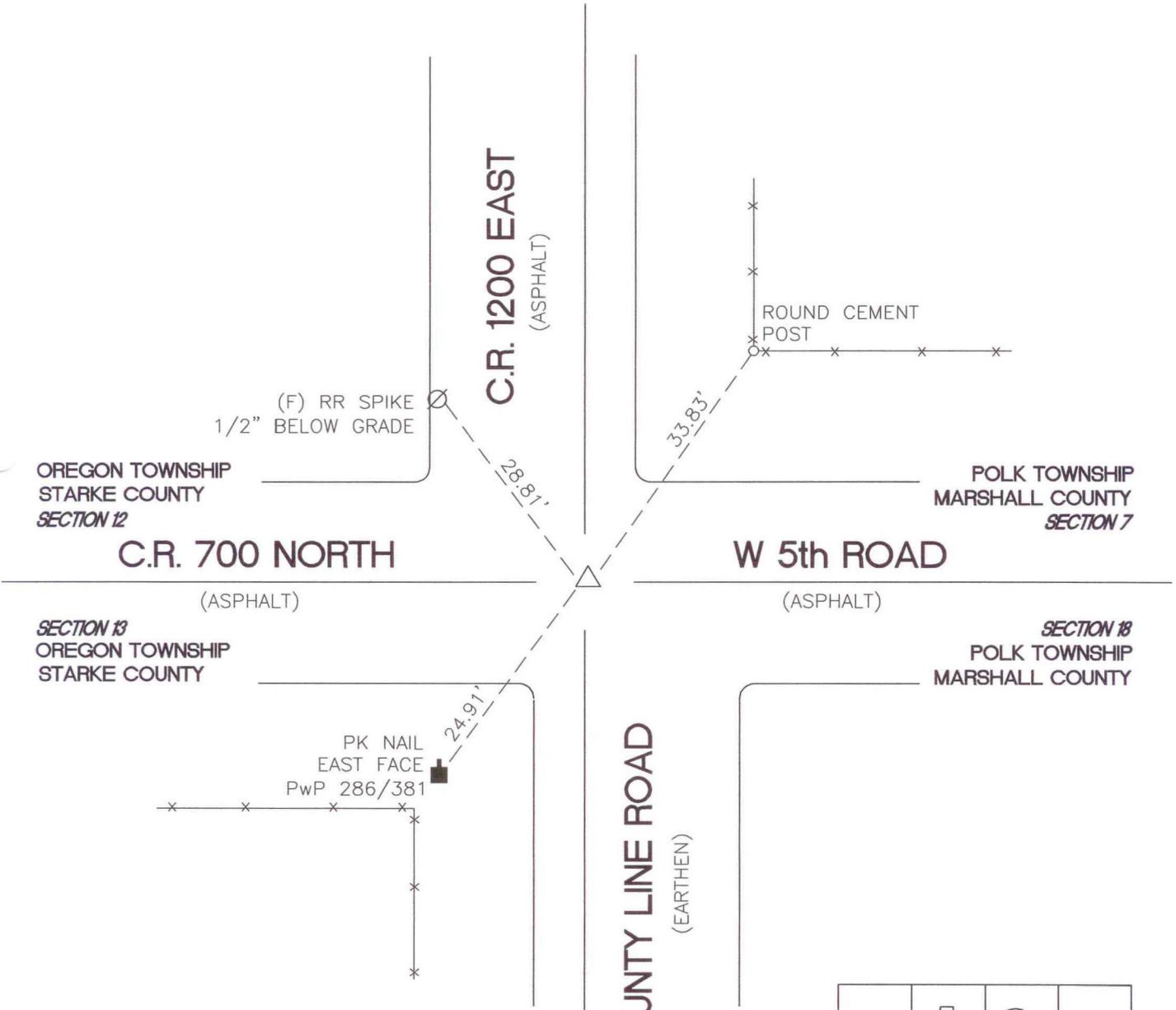


# OREGON TOWNSHIP

## T 34 N, R 1 W



OREGON TOWNSHIP  
STARKE COUNTY  
*SECTION 12*

POLK TOWNSHIP  
MARSHALL COUNTY  
*SECTION 7*

*SECTION 13*  
OREGON TOWNSHIP  
STARKE COUNTY

*SECTION 18*  
POLK TOWNSHIP  
MARSHALL COUNTY

MONUMENT: (F) ALUM MONUMENT FLUSH

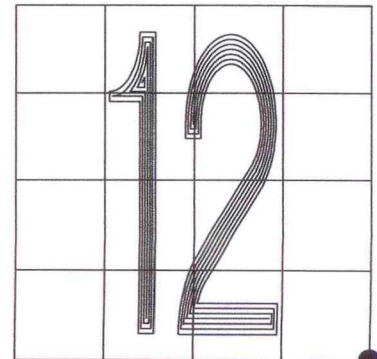
CORNER OF: RECORD  USE

PARTY: VHJ/COD

DATE: 3-21-05

COMMENTS:  
HISTORY: MARSHALL COUNTY SURVEYOR  
RECAPPED WITH CAP ON APRIL 6, 1989.

INDEX NUMBER  
**J25**



CORNER LOCATION IN THE SECTION