

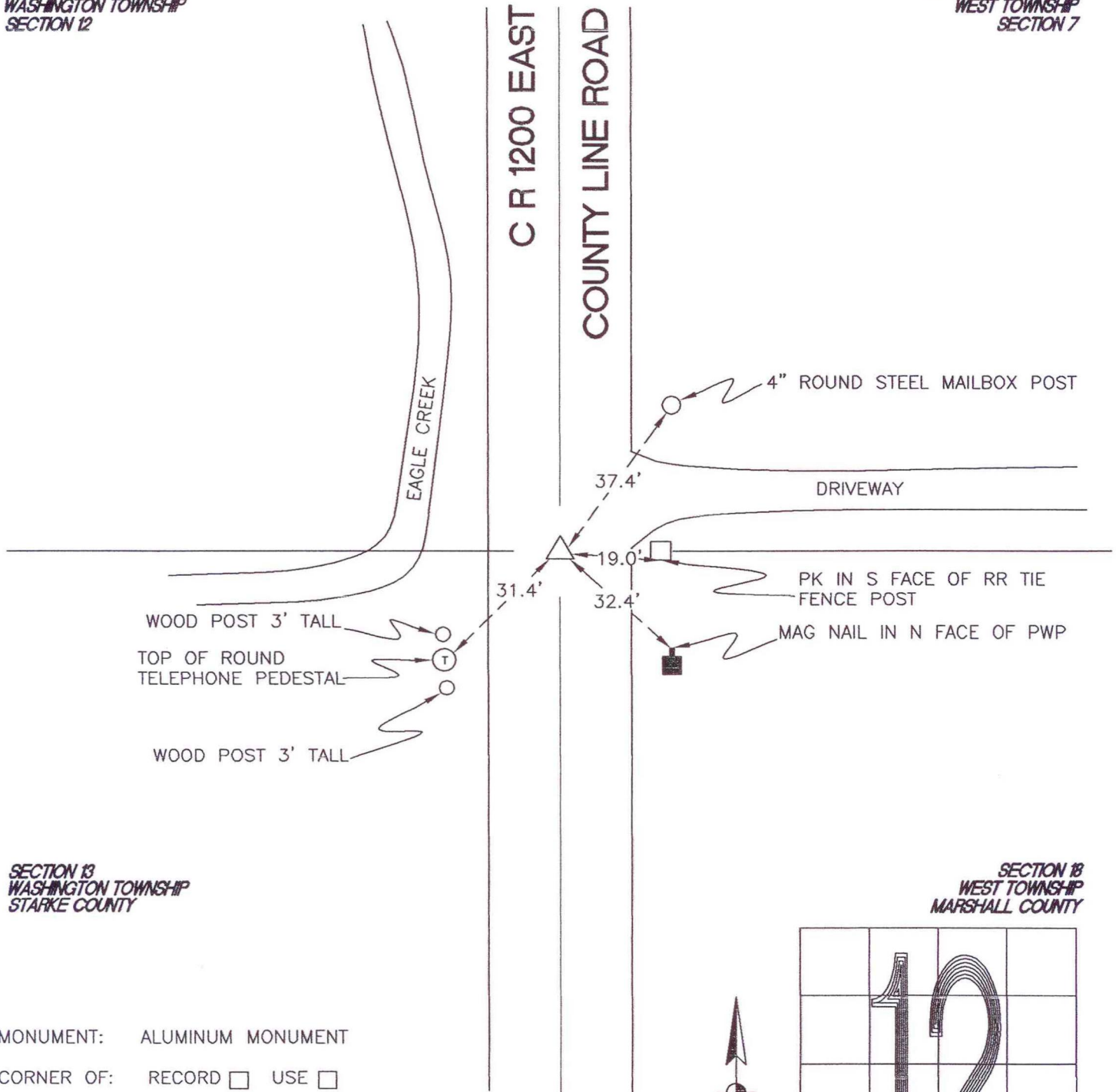
# WASHINGTON TOWNSHIP

T 33 N, R 1 W

## J25

STARKE COUNTY  
WASHINGTON TOWNSHIP  
SECTION 12

MARSHALL COUNTY  
WEST TOWNSHIP  
SECTION 7



SECTION 13  
WASHINGTON TOWNSHIP  
STARKE COUNTY

SECTION 18  
WEST TOWNSHIP  
MARSHALL COUNTY

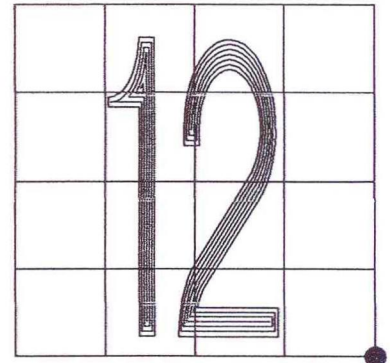
MONUMENT: ALUMINUM MONUMENT

CORNER OF: RECORD  USE

PARTY: JL/PM

DATE: 1-23-2008

COMMENTS: ESTABLISHED BY MARSHALL COUNTY IN 1998. HONORED BY TERRITORIAL ENGINEERING AS A STARKE COUNTY CORNER IN 2001 IN TE SURVEY # 01-181.



CORNER LOCATION IN THE SECTION

# J25